



SUNSHINE COAST POLICING COMMITTEE
Thursday, October 19, 2017
SCRD Cedar Room, 1975 Field Road, Sechelt, B.C.

AGENDA

CALL TO ORDER 1:30 p.m.

AGENDA

1. Adoption of the Agenda

PETITIONS AND DELEGATION

MINUTES

2. Sunshine Coast Policing Committee Minutes of July 20, 2017 - *Receipt* Annex A
pp 1 – 3

COMMUNICATIONS

3. Staff Sergeant Vishal Mathura, Detachment Commander, RCMP,
dated September 21, 2017
Regarding 2016 Annual Police Report Annex B
pp 4 – 24

REPORTS

4. RCMP Monthly Crime Statistics for July 2017 Annex C
p 25
5. RCMP Monthly Crime Statistics for August 2017 Annex D
p 26
6. RCMP Monthly Crime Statistics for September 2017 Annex E
p 27
7. RCMP Crime Report To Follow

NEW BUSINESS / ROUNDTABLE

ADJOURNMENT

NEXT MEETING *to be determined*

**SUNSHINE COAST REGIONAL DISTRICT
POLICING COMMITTEE
July 20, 2017**

MINUTES OF THE SUNSHINE COAST POLICING COMMITTEE MEETING HELD IN THE CEDAR ROOM OF THE SUNSHINE COAST REGIONAL DISTRICT 1975 FIELD ROAD, SECHELT, BC.

PRESENT:

(Voting Members)

Director, Electoral Area E, Chair	Lorne Lewis
Director, Electoral Area A	Frank Mauro
Director, Electoral Area D	Mark Lebbell
Alternate Director, Electoral Area B,	Brian Smith
Director, Electoral Area F	Ian Winn
Councillor, District of Sechelt	Darren Inkster
Councillor, Town of Gibsons	Jeremy Valeriote
School District #46 Trustee	Greg Russell

ALSO PRESENT:

(Non-Voting)

RCMP	S/Sgt. Vishal Mathura
RCMP	C/O Mike Hacker
Area E Community Association	Clint Budd
SCRD Chief Administrative Officer	Janette Loveys
SCRD, Admin. Assist. Infrastructure Services	Tracey Hincks
Media – Coast Reporter	Sean Eckford
Media – The Local Weekly	Donna McMahon

CALL TO ORDER

1:37 p.m.

AGENDA

The agenda was adopted as presented.

PETITIONS AND DELEGATION**MINUTES****Recommendation No. 1***Minutes*

The Sunshine Coast Policing Committee recommended that the minutes of April 20, 2017 be received.

COMMUNICATIONS**Recommendation No. 2***Policing Priorities for 2017/2018*

The Sunshine Coast Policing Committee recommended that the letter from Staff Sergeant Vishal Mathura, Detachment Commander, RCMP, dated May 9, 2017 regarding Policing Priorities for Fiscal Year 2017/2018 be received;

AND THAT the Sunshine Coast Regional District Board send a letter to the RCMP identifying the following policing priorities for the fiscal year 2017/2018:

- Road safety (including speeding and prank driving)
- Marijuana grow operations – (including odor)
- Police visibility
- Property theft
- Fentanyl
- Youth outreach

Recommendation No. 3 *Marijuana Regulation Update*

The Sunshine Coast Policing Committee recommended that the RCMP provide an update on federal marijuana regulations at the January 2018 Policing Committee meeting.

REPORTS

Recommendation No. 4 *Monthly Crime Statistics – April 2017*

The Sunshine Coast Policing Committee recommended that the RCMP Monthly Crime Statistics for April 2017 be received.

Recommendation No. 5 *Monthly Crime Statistics – May 2017*

The Sunshine Coast Policing Committee recommended that the RCMP Monthly Crime Statistics for May 2017 be received.

Recommendation No. 6 *Monthly Crime Statistics – June 2017*

The Sunshine Coast Policing Committee recommended that the RCMP Monthly Crime Statistics for June 2017 be received.

Recommendation No. 7 *RCMP Monthly Report*

The Sunshine Coast Policing Committee recommended that RCMP Monthly Report for the period 2017-04-01 to 2017-06-30 be received.

Staff Sergeant Mathura gave a verbal report on crime on the Sunshine Coast.

Highlights of Reporting Period:

- *Davis Bay business break in – two suspects were arrested.*
- *Impaired driver arrested in Madeira Park.*
- *New RCMP patrol boat. The vessel has been named The Orca.*
- *A number of CRA scams are circulating. Be vigilant of any suspicious communications and contact CRA directly.*
- *A former movie prop plane was mounted in a tree in Middlepoint. The plane caused traffic jams and a 911 call. It was removed after two hours.*
- *A cargo van was searched and over 100 marijuana plants were seized. The driver was arrested for possession for the purpose of trafficking a controlled substance.*

- *Police were called to a Gibsons residence after a structure fire. The building was destroyed. There were no injuries however evidence was found indicating the fire may have been intentionally set.*
- *A distressed dog call was attended in Sechelt after a dog was left in a vehicle in the sun.*
- *There was a motor vehicle accident on Garden Bay Road. The driver had allegedly consumed alcohol earlier in the day.*
- *A soccer game was held with the RCMP and the Sunshine Coast Special Olympics team.*
- *An SUV broke the gates at the Langdale Ferry Terminal and sped up the loading ramp, then launched off a raised loading ramp and landed on the upper deck of the ferry. The driver was uninjured and proceeded to break into two cars before being arrested. The suspect is facing 13 charges.*

Short-Term Rentals Noise Complaints

The Committee discussed short-term rentals and noise complaints. The RCMP explained that noise complaints can either be handled as a Noise Complaint - bylaw file or Cause a Disturbance – police file.

NEW BUSINESS / ROUNDTABLE**Traffic Safety on Marine Drive**

Citizens are taking speed enforcement into their own hands along Marine Drive. Residents are asking for police enforcement.

ADJOURNMENT 2:50 p.m.

Committee Chair

RCMP

ROYAL CANADIAN MOUNTED POLICE

LOWER MAINLAND DISTRICT REGIONAL POLICE SERVICE - **CONNECTED TO OUR COMMUNITIES****Sunshine Coast Detachment**

September 21, 2017

Sunshine Coast Detachment
5800 Teredo Street
PO Box 188
Sechelt BC V0N 3A0

Director Garry Nohr
Sunshine Coast Regional District
1975 Field Road
Sechelt BC V0N 3A1

Re: 2016 Annual Police Report

Dear Director Garry Nohr,

Please find enclosed a copy of the Sunshine Coast RCMP 2016 Annual Police Report and Crime Statistics.

We look forward to our continued strong partnership with the Sunshine Coast citizens to ensure our community remains a safe and secure place for all to live, work and play.

Please contact me directly should you have any questions or comments.

Yours truly,


S/Sgt Vishal Mathura
Detachment Commander
Sunshine Coast RCMP
604.885.2266

/mr



MASTER FILE COPY



Royal Canadian Mounted Police Gendarmerie royale du Canada

Canada

**Sunshine Coast Detachment**SORD
RECEIVED
SEP 27 2017

CHAIR



Royal Canadian Mounted Police Sunshine Coast Detachment 2016 Annual Report



Contents

A Message from the Detachment Commander.....	2
Our Mission.....	3
Our Vision.....	3
Our Commitment to our Communities	3
Our Core Values	3
Sunshine Coast Police Coverage	4
Organizational Chart.....	5
Calls for Service.....	6
Crime Reduction & Police Visibility	7
Police Visibility.....	8
Traffic Statistics	9
School and Youth Liaison	10
First Nations Policing.....	11
New Police Boat.....	12
Police Dog Services	13
Community Policing	14
Victim Services	15
Cops for Cancer	16
Red Serge Gala.....	17
Special Olympics	18
Contact Information	18

A Message from the Detachment Commander



On behalf of the members, support staff and volunteers of the Sunshine Coast RCMP Detachment, I am pleased to present our 2016 Annual Report on policing services. Our detachment continues to be committed to working with our communities to provide the best police service to the residents and visitors of the Sunshine Coast.

Our calls for service in 2016 totaled 8291 which is down from 8526 in 2015. Crime reduction initiatives undertaken by the detachment in consultation with our community partners consisted of increased police visibility, working with youth and road safety.

The commitment to Community Safety for the people of the Sunshine Coast has been and will continue to be our top priority and the driving force behind the members who dedicate themselves every day to the job of policing the coast.

I am extremely proud to be your Detachment Commander and I appreciate the support of our community partners.

Vishal Mathura

Staff Sergeant

Sunshine Coast RCMP

Our Mission

The RCMP is Canada's national police service. Proud of our traditions and confident in meeting future challenges. We commit to preserve the peace, uphold the law, and provide quality service in partnership with our communities.

Vision

We will:

- Be a progressive, proactive and innovative organization
- Provide the highest quality service through dynamic leadership, education and technology in partnership with the diverse communities we serve
- Be accountable and efficient through shared decision making
- Ensure a healthy work environment that encourages team building, open communication and mutual respect
- Promote safe communities
- Demonstrate leadership in the pursuit of excellence

Commitment to our Communities

- Unbiased and respectful treatment of all people
- Accountability
- Mutual problem solving
- Cultural sensitivity
- Enhancement of public safety
- Partnerships and consultation
- Open and honest communication
- Effective and efficient use of resources
- Quality and timely service

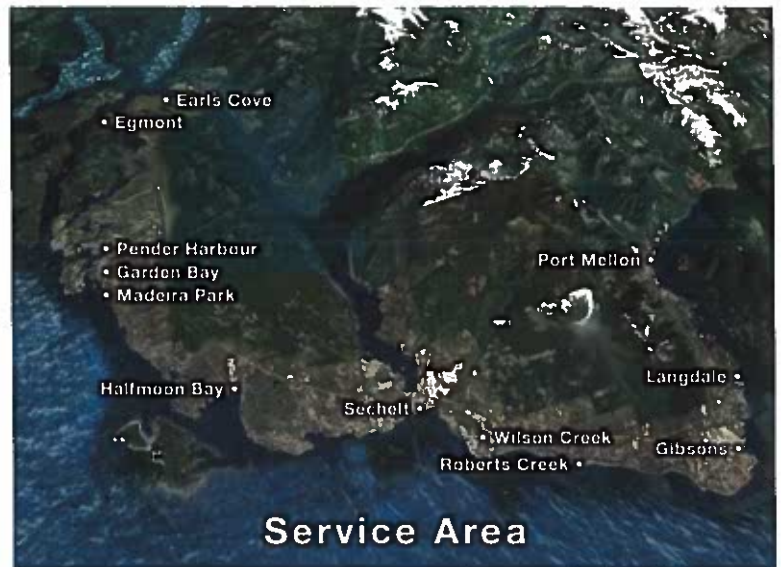
Core Values

- Honesty
- Integrity
- Professionalism
- Compassion
- Accountability
- Respect

Sunshine Coast Police Coverage

The Sunshine Coast RCMP is comprised of the Sechelt and Gibsons Detachment which together patrol 139 kms of highway or 381, 023 hectares of land. The policing area spans from Port Mellon to Egmont and includes the following areas:

- Port Mellon
- Langdale
- A section of Squamish Nation (Skwxwú7mesh Úxwumixw)
- The Town of Gibsons
- Roberts Creek
- Wilson Creek
- Davis Bay
- The District of Sechelt
- Shishálh First Nation Community (Sechelt Nation)
- Halfmoon Bay
- Pender Harbour
- Egmont

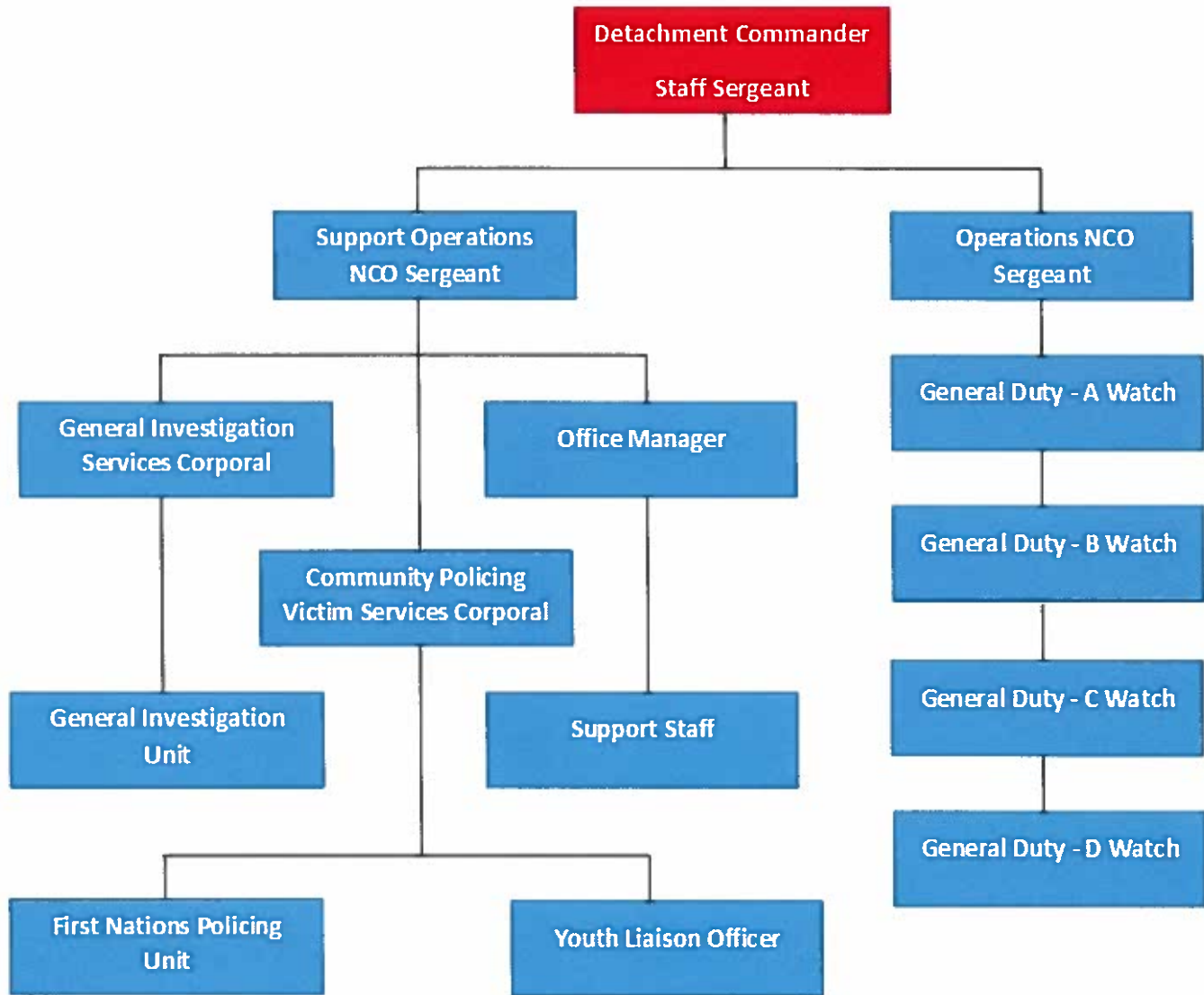


The Sunshine Coast RCMP covers a wide variety of urban and rural environments as well as a 1000 km of coastline and islands. According to statistics Canada, the population of the policing area is approximately 30,000 people (2016 Census).

The Detachment is comprised of 35 regular members of the Royal Canadian Mounted Police, 11 support staff and a Victim Services Coordinator. There are also specialized sections of police officers in Traffic Services, First Nations Policing, Youth Intervention and a General Investigations unit.

The Sunshine Coast Detachment police officers patrol various areas of the coast via Mountain Bikes and ATV's. To further the safety of the waters surrounding the coast members routinely make Marine patrols along the coast line.

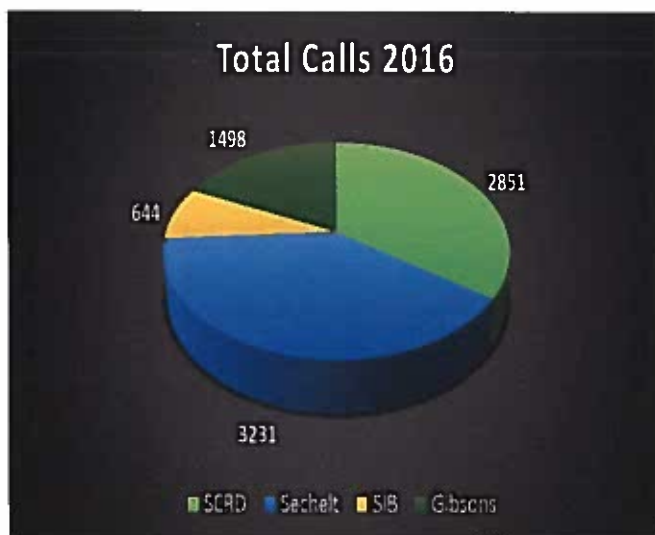
2016 Organizational Chart



Calls for Service

The Sunshine Coast detachment area is broken down into four districts: The Sunshine Coast Regional District, District of Sechelt, Sechelt Indian Band, and the Town of Gibsons. The following information represents the breakdown of calls that the RCMP responded to in each district.

On average the Sunshine Coast RCMP was called upon to serve our community 23 times per day.



Crime Reduction & Police Visibility

The Sunshine Coast RCMP is dedicated toward reducing the overall crime through many proactive measures. Many of our initiatives are designed to track known offenders and ensure that the RCMP is highly visible within our community.

Curfew Checks

One of the most valuable means of reducing the activity of repeat offenders on the coast is to perform curfew checks. Curfew checks allow our officers to ensure that known offenders are accountable for their actions and are maintaining a positive contribution to our society.

Curfew Checks

882

Liquor License Premise Checks

Ensuring that liquor establishments refrain from over serving their clients as well as not providing liquor to minors allows everyone in our community to enjoy their time at the restaurants and bars on the coast.

Liquor License Premises Checks

1450

Police Visibility

The Sunshine Coast RCMP has always been proud of their involvement within the community and are proud of their ability to conduct foot patrols, bike patrols, boat patrols, and school visits. This allows our officers to interact with the citizens of the Sunshine Coast and work to build a positive relationship with the police.

Foot Patrols

Foot Patrols allow our members to monitor the busy areas of the community that are not accessible by vehicles. Foot patrols are a very effective way of deterring criminal activity by increasing the visibility of police presence within the community.

Foot Patrols

3374

Rural Patrols

Rural Patrols

861

2016 Traffic Statistics

Traffic safety is of the utmost importance to the Sunshine Coast RCMP. When our officers are not responding to calls for service, they are out on the roads ensuring that the community remains safe. Our members were out in force using road blocks, stationary radar, as well as school zone enforcement to maintain the highest level of safety for all.

Tickets Issued

677

Traffic Warnings

1434

24 Hr Suspensions

14

On the Sunshine Coast our officers are determined to eliminate impaired driving. This year our officers located and stopped 78 impaired drivers.

Immediate Roadside Prohibitions

78

Alexa's Team is a program that recognizes dedicated police officers throughout the province who work to reduce the number of drivers under the influence of drugs and/or alcohol. Since the inception of the program in 2008, Alexa's Team has been successfully able to reduce drinking and driving in BC by upwards of 50%. This year the Sunshine Coast RCMP is proud to announce that two of our officers were named on Alexa's Team including Constable Kevin Shepherd and Constable Darcy Dumais. The recognized officers have all taken at least 12 impaired drivers off the road in the past year through a criminal code investigation or an administrative 90-day immediate roadside prohibition. Constable Ben Stewart was one investigation away from making the team as well.



School and Youth Liaison

The Sunshine Coast RCMP views our youth as a priority and as such, has a designated Youth Liaison Officer. Relationship building, accessibility, visibility, support and enforcement are built into the role of our school liaison member. The Youth Liaison Officer conducts, on a regular basis, school visits, and traffic enforcement in school zones, foot patrols and school talks. The Youth Liaison also participates in sporting activities with the youth such as volleyball, basketball and soccer. This maximizes the contact between youth and our General Duty members while still maintaining the consistency and relationship building that is so crucial to youth centered programs.

Our dedicated Youth Liaison position is held by Constable Kyle Hrynyk. He works closely with all 15 schools on the Sunshine Coast and has been able to act as a resource for teachers and parents and provide a positive role model for our youth.



Sechelt First Nations Policing

The Sunshine Coast RCMP Detachment supports aboriginal policing with a dedicated First Nations Policing Unit.

Committed to the priority of improving relations with the Sechelt Indian Band, The Sechelt Nation is served by all members of the Sunshine Coast RCMP Detachment.

Total Calls for Service
644

On May 17, 2016 First Nations Police honoured Constable Carl Dixon with a plaque. Constable Dixon is a Shishalh Nation Band Member who was a former member of the Sechelt RCMP and served his community for 20 years. The plaque was presented to Constable Dixon's family and the Shishalh Nation. Sergeant Dee Stewart and Inspector John Brewer attended and partook in the presentation which was attended by approximately fifty people including family, friends, past co-workers and the Shishalh Nation Chief and council. Constable Dixon's plaque will be an inspiration for the Shishalh Nation youth and community members who may be considering a career in the RCMP.



New Police Boat



The new RCMP patrol vessel has been delivered to the Sunshine Coast. The marine unit will allow members to patrol the coastline more often and in all weather conditions. The new boat features a range of updates specifically designed for the Sunshine Coast RCMP's needs including an enclosed cabin, twin 200hp outboard motors, and advanced technology. The vessel is faster and more stable than its predecessor, allowing the crew to operate it in more extreme weather conditions. It will be stored at Gibsons Marina in the RCMP's boat house but can also be put on a trailer and brought to northern areas of the coast.

Staff Sergeant Vishal Mathura points out that the Sunshine Coast patrols the greatest amount of shoreline, over 1000 km, compared to any other RCMP detachments in BC. With the new vessel, officers will be more prepared to get to places out on the water safely and can respond within a reasonable amount of time.

Currently 10 members are trained to operate the RCMP vessel. In addition to responding to calls, officers will also be stopping boats out on the water to ensure compliance with boating regulations, check for impaired drivers, and conduct foot and bike patrols on various islands that are boat-access only.

A naming contest for children under 12 years of age was held in spring with the chosen name being The Orca. The winner of the contest got to take a cruise on the new vessel in Gibsons Harbour.

Police Dog Services

In early 2017 the Sunshine Coast was proud to welcome a new police service dog in training. Police Service Dog Janga!

Janga was born at the RCMP's main dog breeding facility in Innisfail Alberta and was given to Constable Kyle Hrynyk in January to begin training. As Janga progresses, he will be put through a series of tests to ensure that he is meeting all of the program requirements. This testing includes confidence testing, building familiarization tests, and tracking. This is actually Constable Hrynyk's fourth dog that he has trained as he is working towards his ultimate goal to become a full-time police dog handler in the future.

His former police dog in training, Hasco, recently graduated from the police-dog training program and was assigned to work in Surrey, BC. Hasco received a year and a half of intensive training before getting sent off on duty. His primary responsibilities include assisting in tracking missing persons, searching for drugs, and performing searches for real police calls for service.



Constable Hrynyk with Janga

Community Policing

The Sunshine Coast RCMP has many volunteers that are dedicated to the safety of this community. These volunteers man the Pender Harbour and Gibsons Community Policing Offices as well as manage the Restorative Justice Program. The Sunshine Coast RCMP is also supported by the Sunshine Coast Victim Services.

Restorative Justice

The Restorative Justice Program of the Sunshine Coast is a non-profit volunteer based organization that is designed as an alternative to criminal charges. Restorative Justice works well with young and first time offenders to collaborate with the victims and other members of the community to help the offenders realize the full cost of their actions. During the Restorative Justice Program the victim, offenders, and community to come up with an acceptable punishment for the offender.

Some of the outcomes include:

Victim:

- Financial Restitution
- Letters of Apology
- Emotional Healing
- Improved Safety and Security
- Settled Home Life
- Closure

Offender:

- Community Volunteer Hours
- Counseling for Anger Management, Addictions, Nutrition, and Mental Health
- Writing/ Presenting essays on various topics

Victim Services

When a person is a victim of a crime or traumatic event it is often hard to cope with the aftermath and move forward with their life. Sunshine Coast RCMP Victim Services provides information, support and assistance to individuals who have endured events such as assault, break and enter, robbery, fraud or sudden death.

The services provided are tailored to each client to enhance the long term well-being of the client. The program staff strive to reduce the impact of crime and trauma through thoughtful and empathetic support and to prevent re-victimization by enhancing the victim's understanding of police and court procedures.

Sunshine Coast Victim Services is staffed by a program coordinator, relief coordinator and 5 on-call crisis support workers, providing 24 hour, 7 days a week service. This allows us to provide immediate responses to police requests for victim support. Follow up services and community referrals are also offered.

In 2016, we responded to 213 police files, a 12% increase from the previous year. In sum, 24 files were after-hours call-outs, 44% of our files were related to relationship violence, and 28% of our files were related to sudden deaths.

We are also involved in prevention activities, such as participating in the local Violence Against Women in Relationships (VAWIR) Coordinating Committee and the Community Response Network. We also secured Department of Justice funding to lead the implementation of the Mentors in Violence Prevention (MVP) project, working with local secondary schools, training school staff and grade 11-12 students to facilitate violence prevention discussions with younger students.

There is always someone available to help 24 hours a day.

Emergency – 911

Non-Emergency – Call the Sunshine Coast RCMP Detachment – (604) 885-2266

Sunshine Coast RCMP Victim Services – (604) 885-5554

Cops for Cancer

Cops for Cancer Tour de Coast is an annual fundraiser that takes place each fall when over a hundred emergency services personnel including police officers and firefighters from throughout BC cycle for up to two weeks across the BC Coastline. As the riders peddle the 900km trip they make numerous stops at local schools to inform students how the ride benefits children dealing with Cancer.



Constable Dustin Shevchenko was the Sunshine Coast's only rider this year as teammate Constable Ed Harrison had to drop out for health reasons before the ride commenced on September 21st, 2016.

Photo credit: Coast Reporter 2016

Red Serge Gala

The annual Cops for Cancer Ladies' Red Serge Gala was held on September 15, 2016 and raised a record amount totaling close to \$59,000 for pediatric cancer research. The event was sold out with 250 ladies who came and had an excellent time being served appetizers, a gourmet dinner, and drinks by detachment officers, local fire fighters and paramedics in uniform. The event also featured a silent auction, door prizes, draws, raffles and blackjack tables where guests tried their luck to win Mountie bucks which could be used to bid on selected items. The money raised from the gala went towards the total amount raised by the Coast's Cops for Cancer tour de Coast rider, Constable Dustin Shevchenko.



Photo credit: Coast Reporter 2016



Photo credit: Coast Reporter 2016

Special Olympics 2016



Photo credit: Coast Reporter

Members of the Sunshine Coast RCMP recently teamed up with athletes from the Sunshine Coast Special Olympics for some fast-paced soccer in what has become an annual event. The two teams were made up of a mix of athletes from Sechelt, Gibsons and officers Ben, Ed, Kevin, Michelle, and Andrea. The plays were fast, furious and filled with non-stop action, near misses and amazing shots. A solid turnout of spectators enjoyed the game while cheering on their friends and family members.



Photo credit: Special Olympics Sunshine Coast

Contact Information

5800 Teredo St, Box 188
Sechelt, BC, V0N 3A0

Office Hours
Monday – Friday
8:00 am – 4:00 pm
Saturday and Sunday
Closed

Gibsons Community Police Office

737 Sunnycrest Rd, Gibsons

To Contact the Gibsons office, call the main Sechelt line and ask to be transferred.

Office Hours
Monday – Friday
8:30 am – 4:30 pm
Closed for lunch 1:00 pm to 2:00pm
Saturday and Sunday
Closed

Pender Harbour Community Police Office

12905 Madeira Park Rd, Madeira Park

Office Hours
Thursdays only
10:00 am – 2:00 pm
604-883-2026

When contacting the Sunshine Coast RCMP, please note:

For emergency assistance call 9-1-1

For non-emergency assistance call (604) 885-2266



SUNSHINE COAST RCMP DETACHMENT

Monthly Crime Statistics	5-yr Average	5-yr Range	Monthly Totals		% Change from 2016 to 2017
TOTAL CALLS FOR SERVICE	JULY		JULY 2016	JULY 2017	
Sunshine Coast Regional District	317	286-342	286	342	+20
District of Sechelt	322	296-352	296	299	+1
Sechelt Indian Band	77	63-97	63	81	+29
Town of Gibsons	174	163-187	163	166	+2
CRIMES AGAINST PERSONS					
Sunshine Coast Regional District	19	11-27	11	23	+109
District of Sechelt	22	16-30	16	20	+25
Sechelt Indian Band	7	3-12	3	7	+133
Town of Gibsons	13	9-19	14	12	-14
PROPERTY CRIMES					
Sunshine Coast Regional District	35	20-45	20	45	+125
District of Sechelt	42	25-54	25	37	+48
Sechelt Indian Band	8	6-15	6	7	+17
Town of Gibsons	24	17-27	30	22	-27
OTHER CRIMINAL CODE					
Sunshine Coast Regional District	19	16-23	20	19	-5
District of Sechelt	28	21-34	26	26	0
Sechelt Indian Band	8	3-16	3	5	+67
Town of Gibsons	15	13-19	13	13	0
CDSA					
Sunshine Coast Regional District	6	3-11	3	4	+33
District of Sechelt	9	4-14	12	14	+17
Sechelt Indian Band	3	1-4	1	4	+300
Town of Gibsons	4	2-8	2	2	0
OTHER FEDERAL STATUTES					
Sunshine Coast Regional District	16	11-32	32	11	-66
District of Sechelt	5	1-9	5	1	-80
Sechelt Indian Band	1	0-1	1	0	-100
Town of Gibsons	3	1-5	3	1	-67
PROVINCIAL STATUTES					
Sunshine Coast Regional District	35	28-49	32	49	+53
District of Sechelt	38	26-53	40	38	-5
Sechelt Indian Band	14	12-18	13	18	+38
Town of Gibsons	24	5-35	5	19	+280
BY-LAW INFRACTIONS					
Sunshine Coast Regional District	17	15-18	15	18	+20
District of Sechelt	21	13-27	13	27	+108
Sechelt Indian Band	2	0-4	2	4	+100
Town of Gibsons	8	5-10	5	10	+100
TRAFFIC INVESTIGATIONS					
Sunshine Coast Regional District	75	66-81	66	74	+12
District of Sechelt	56	51-67	67	51	-24
Sechelt Indian Band	12	8-17	14	12	-14
Town of Gibsons	23	18-36	22	22	0
TOTAL VIOLATION TICKETS ISSUED	84	83-98	83	68	-18

This chart identifies ALL PRIME files for the month indicated, including those scored as founded, unfounded, unsubstantiated, prevention, and departmental discretion. Some files have more than one offence/category. Percentage increases of more than 10% are noted in red, while below average numbers are noted in green.

This document is operation and subject to change. It is not to be copied or disseminated without consent of originator. Data collected from PRIME RMS.



SUNSHINE COAST RCMP DETACHMENT

Monthly Crime Statistics	5-yr Average	5-yr Range	Monthly Totals		% Change from 2016 to 2017
TOTAL CALLS FOR SERVICE	AUGUST		AUG 2016	AUG 2017	
Sunshine Coast Regional District	347	331-360	349	331	-5
District of Sechelt	362	326-399	368	347	-6
Sechelt Indian Band	76	66-89	69	76	+10
Town of Gibsons	161	139-189	144	182	+26
CRIMES AGAINST PERSONS					
Sunshine Coast Regional District	22	17-32	17	32	+88
District of Sechelt	22	18-27	19	27	+42
Sechelt Indian Band	8	4-12	10	8	-20
Town of Gibsons	12	8-19	9	12	+33
PROPERTY CRIMES					
Sunshine Coast Regional District	33	22-42	42	22	-48
District of Sechelt	49	40-55	44	40	-9
Sechelt Indian Band	12	3-17	10	3	-70
Town of Gibsons	22	15-35	22	21	-5
OTHER CRIMINAL CODE					
Sunshine Coast Regional District	22	17-29	24	17	-29
District of Sechelt	29	23-39	24	23	-4
Sechelt Indian Band	11	8-14	10	12	+20
Town of Gibsons	13	4-25	13	12	-8
CDSA					
Sunshine Coast Regional District	6	2-10	2	4	+100
District of Sechelt	7	4-9	4	8	+100
Sechelt Indian Band	1	0-2	1	2	+100
Town of Gibsons	2	1-4	3	4	+33
OTHER FEDERAL STATUTES					
Sunshine Coast Regional District	27	16-36	32	36	+13
District of Sechelt	9	5-14	6	9	+50
Sechelt Indian Band	1	0-1	0	0	0
Town of Gibsons	5	2-13	2	4	+100
PROVINCIAL STATUTES					
Sunshine Coast Regional District	36	26-44	37	31	-16
District of Sechelt	39	34-43	41	39	-5
Sechelt Indian Band	9	6-11	11	10	-9
Town of Gibsons	20	15-26	21	26	+24
BY-LAW INFRACTIONS					
Sunshine Coast Regional District	23	15-29	26	15	-42
District of Sechelt	19	14-24	23	14	-39
Sechelt Indian Band	2	0-3	3	1	-67
Town of Gibsons	11	7-17	8	12	+50
TRAFFIC INVESTIGATIONS					
Sunshine Coast Regional District	86	78-97	86	78	-9
District of Sechelt	73	55-80	80	80	0
Sechelt Indian Band	12	9-16	11	16	+45
Town of Gibsons	18	14-26	14	26	+86
TOTAL VIOLATION TICKETS ISSUED	73	55-106	82	55	-33

This chart identifies ALL PRIME files for the month indicated, including those scored as founded, unfounded, unsubstantiated, prevention, and departmental discretion. Some files have more than one offence/category. Percentage increases of more than 10% are noted in red, while below average numbers are noted in green.

This document is operation and subject to change. It is not to be copied or disseminated without consent of originator. Data collected from PRIME RMS.



SUNSHINE COAST RCMP DETACHMENT

Monthly Crime Statistics	5-yr Average	5-yr Range	Monthly Totals		% Change from 2016 to 2017
TOTAL CALLS FOR SERVICE	SEPTEMBER		SEPT 2016	SEPT 2017	
Sunshine Coast Regional District	260	229-296	268	296	+10
District of Sechelt	286	260-320	279	292	+5
Sechelt Indian Band	53	39-66	66	39	-41
Town of Gibsons	130	115-138	131	138	+5
CRIMES AGAINST PERSONS					
Sunshine Coast Regional District	14	8-20	15	20	+33
District of Sechelt	22	11-30	33	20	-39
Sechelt Indian Band	5	2-7	7	2	-71
Town of Gibsons	8	5-12	11	12	+9
PROPERTY CRIMES					
Sunshine Coast Regional District	33	28-43	28	29	+4
District of Sechelt	39	32-46	32	46	+44
Sechelt Indian Band	8	4-12	11	4	-64
Town of Gibsons	20	14-26	21	20	-5
OTHER CRIMINAL CODE					
Sunshine Coast Regional District	12	3-18	12	18	+50
District of Sechelt	21	32-42	17	16	-6
Sechelt Indian Band	5	4-12	5	1	-80
Town of Gibsons	11	14-26	10	7	-30
CDSA					
Sunshine Coast Regional District	5	3-8	4	5	+25
District of Sechelt	7	5-8	7	8	+14
Sechelt Indian Band	1	0-2	2	1	-50
Town of Gibsons	2	1-4	3	1	-67
OTHER FEDERAL STATUTES					
Sunshine Coast Regional District	10	7-15	7	15	+114
District of Sechelt	5	1-8	4	5	+25
Sechelt Indian Band	0	0-1	0	0	0
Town of Gibsons	1	1-2	2	1	-50
PROVINCIAL STATUTES					
Sunshine Coast Regional District	30	22-38	36	38	+6
District of Sechelt	35	32-38	38	35	-8
Sechelt Indian Band	10	7-17	9	7	-22
Town of Gibsons	19	13-22	19	13	-32
BY-LAW INFRACTIONS					
Sunshine Coast Regional District	12	5-19	19	18	-5
District of Sechelt	11	9-15	9	15	+67
Sechelt Indian Band	2	0-4	4	2	-50
Town of Gibsons	8	4-16	7	16	+129
TRAFFIC INVESTIGATIONS					
Sunshine Coast Regional District	74	61-88	88	74	-16
District of Sechelt	51	40-56	56	50	-11
Sechelt Indian Band	8	6-9	6	7	+17
Town of Gibsons	17	13-21	13	13	0
TOTAL VIOLATION TICKETS ISSUED	59	48-71	47	69	+47

This chart identifies ALL PRIME files for the month indicated, including those scored as founded, unfounded, unsubstantiated, prevention, and departmental discretion. Some files have more than one offence/category. Percentage increases of more than 10% are noted in red, while below average numbers are noted in green.

This document is operation and subject to change. It is not to be copied or disseminated without consent of originator. Data collected from PRIME RMS