



Water Project Update

Special Board Meeting
July 6, 2023

Church Road Well



- ‘Leave to Commence’ received June 30.
- Substantial completion issued June 30.
- SCRD now able to operate Church Road well.
- Soames Creek Environmental Flow Needs to be monitored.
- Staff will present an **award report on this agenda.**



Up to 4.6 million litres per day

Langdale Well

- Drilling and testing completed
- Consultant report to Board in September
- Water licence application to follow
- Conceptual design underway



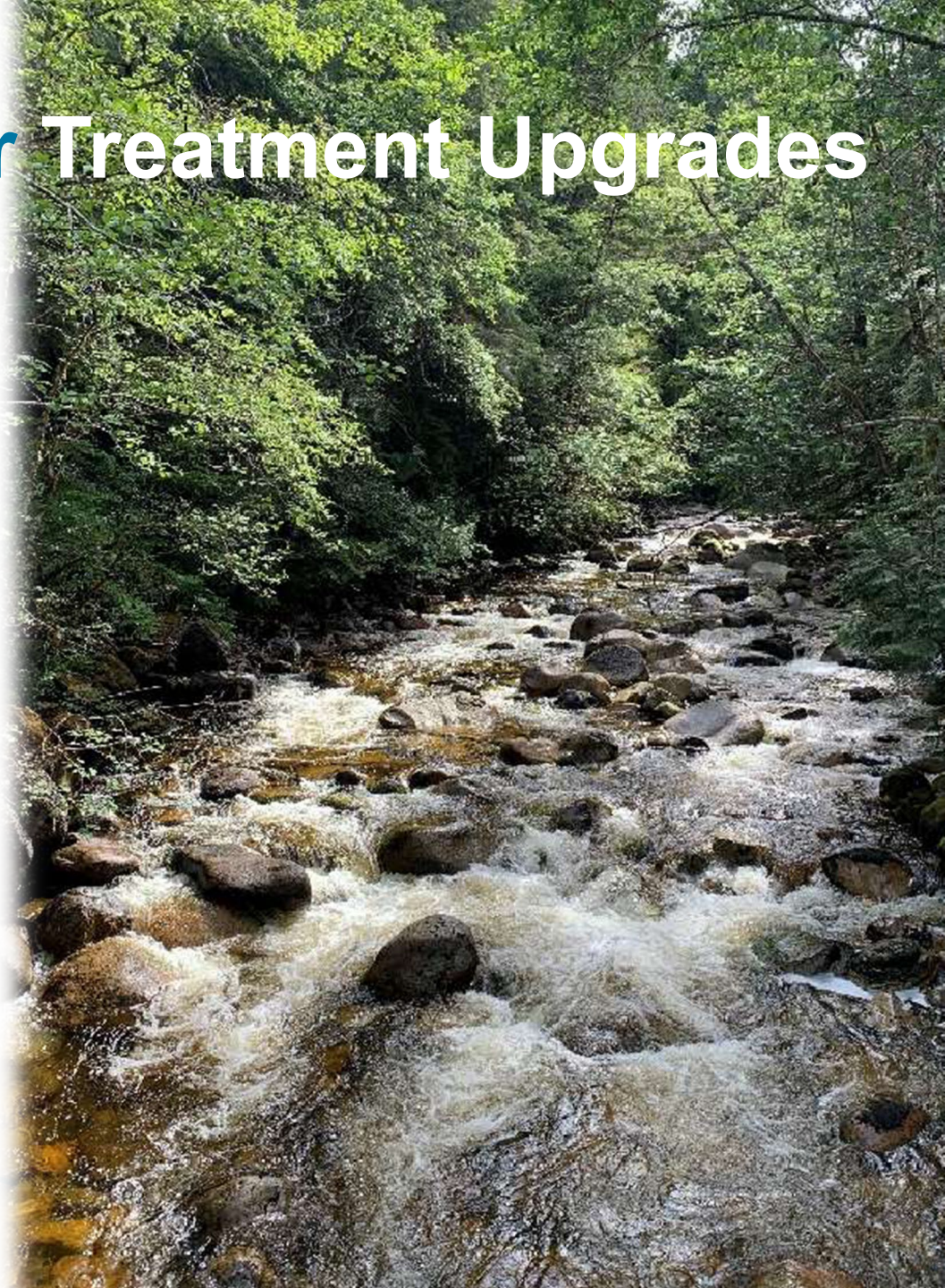
Water Meter Installations

- SCRD received \$6 Million grant
- Work is underway
- Installation work to begin in October



Gray Creek Water Treatment Upgrades

- Capacity to provide up to 2.7 million litres per day
- In second year of monitoring
- shíshálh Nation support required



Chapman Siphon System Update

- Applications submitted to Ministry of Forests and Ministry of Environment and Climate Change Strategy
- shíshálh Nation not opposed siphon use during Stage 4 for 2023/2024
- Letter sent to the Province in April requesting expedited processing
- MOF has committed to expedited review



Environmental Flow Needs (EFN)

A scenic view of a rocky river with a log in the water. The river flows over numerous light-colored rocks and boulders. A large, weathered log lies horizontally across the middle of the river. The water is clear, reflecting the surrounding greenery and sky. The banks are covered in dense vegetation, including trees and shrubs.

- The SCRD is required to release 17.3 million litres per day (200 litres per second)
- SCRD has shared information with shíshálh Nation for discussion
- Recommendations developed by consultant (RPBio):
1.38 million litres per day (160l/s) in Jun/Jul and
1.55 million litres per day (180l/s) in Aug/Sep
- SCRD has submitted an emergency authorization request for July and August 2023

Eastbourne Water Supply Expansion

- Current water system has three shallow wells and one deeper well.
- Three test wells were drilled and tested earlier this year.
- Report and presentation coming forward for July 27 COW.



Groundwater Exploration

- Board direction provided to explore new potential groundwater sources
- New groundwater wells would provide further diversification
- Award report coming to July 13 COW



Gibsons / SCRD System Optimization

- Builds on current framework Emergency Water Supply agreements
- Aligns water provision, environmental protection and increases resiliency.



Gibsons / SCRD System Optimization

Proposed work includes:

- Increase reliability for both communities
- Align strategies and planning goals
- Plan best use for each water source



Maryanne West Park Well

- RFP under development
- Collaboration with Town of Gibsons



Questions?