



# Guiding Principles, Evaluation & Engagement Approach

Presentation to PTAC on June 6, 2023



# Meeting Outline

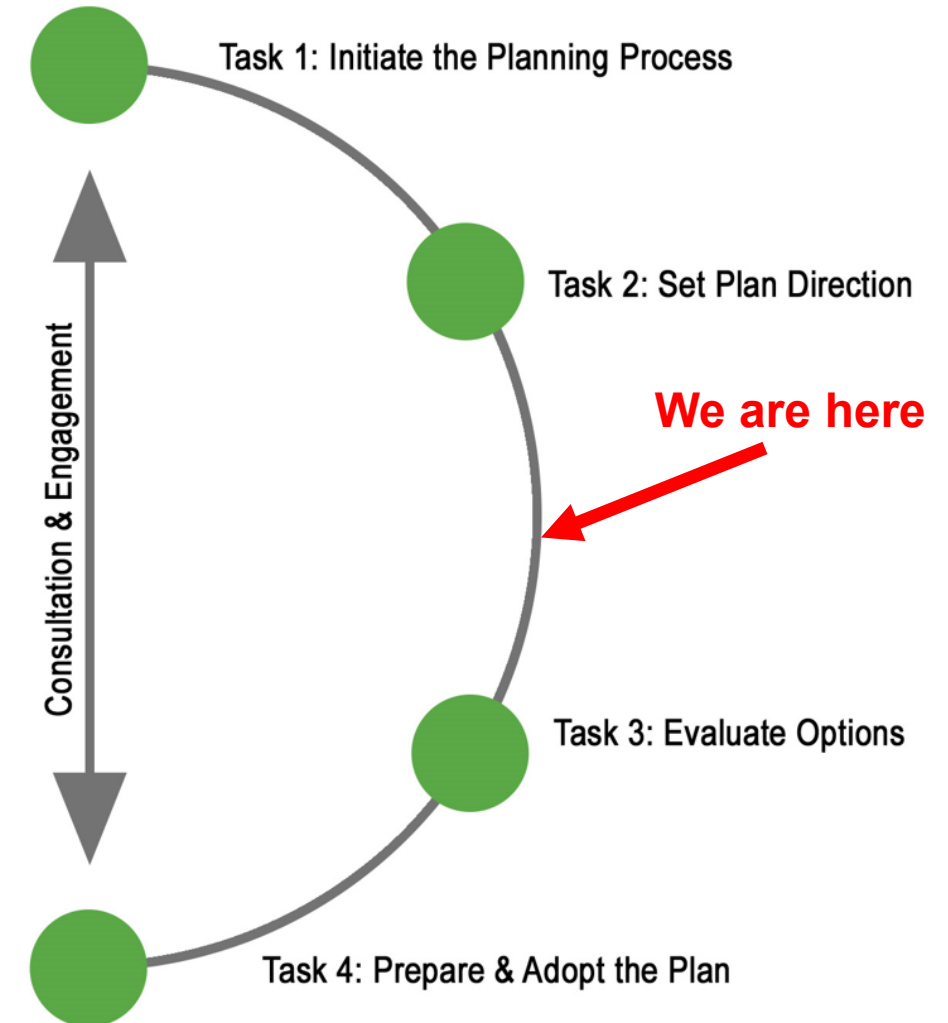
- Introductions (if anyone new to the group)
- Where we are in the planning process
- Proposed guiding principles
- Proposed evaluation approach for strategies
- Consultation approach
- Next steps



## Let's Talk Trash

# Plan Process Overview

- Updating a solid waste management plan (SWMP) involves a four-step process



# Proposed Guiding Principles

---



- All eight of the Ministry's guiding principles were adopted in principle
- PTAC wanted to add language to better reflect the region's vision to seek local recycling and waste solutions, support local jobs, reduce greenhouse gas (GHG) impacts and increase the region's climate resilience

# Proposed Guiding Principles

---

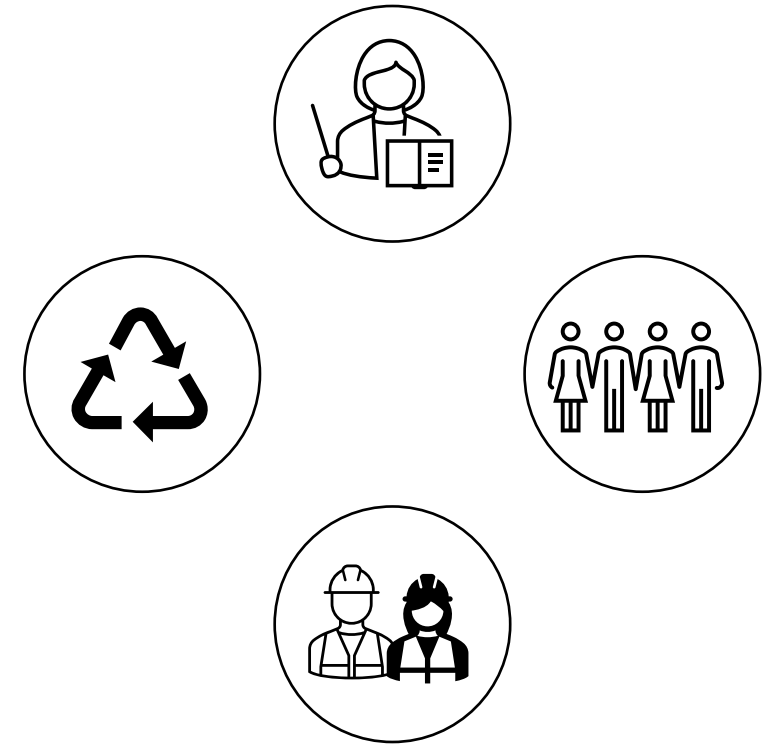


1. Engage with the community about waste reduction through education and outreach
2. Focus on the first 3Rs (Reduce, Reuse, Recycle)
3. Maximize beneficial use of waste materials, such as turning food waste into compost
4. Support polluter-pay approaches for fees instead of tax increases
5. Prevent organics and recyclables from going in the garbage
6. Develop collaborative partnerships with interested parties to achieve waste diversion targets
7. Explore options that promote cost-effective waste management on the Sunshine Coast
8. Minimize environmental impacts through reducing GHG emissions from the landfill and promoting proper disposal
9. Establish a more equitable playing field for waste disposal across the region

# Guiding Principles

## 1. Engage with the community about waste reduction through education and outreach

- Promote waste reduction to help minimize waste generation and enable the sustainable use and reuse of products and materials
- Landfilling → resource that can be used locally as part of a circular economy and support local jobs

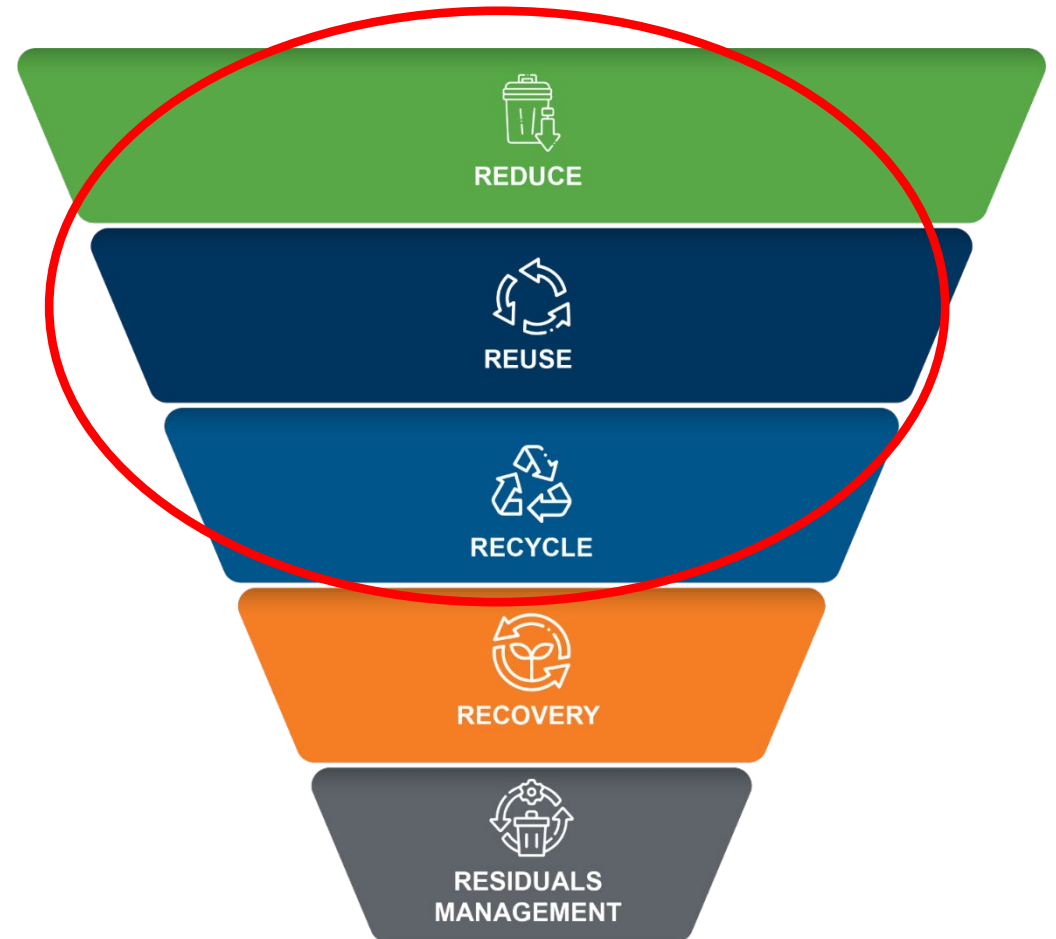




# Guiding Principles

## 2.Focus on the first 3 Rs (reduce, reuse and recycle)

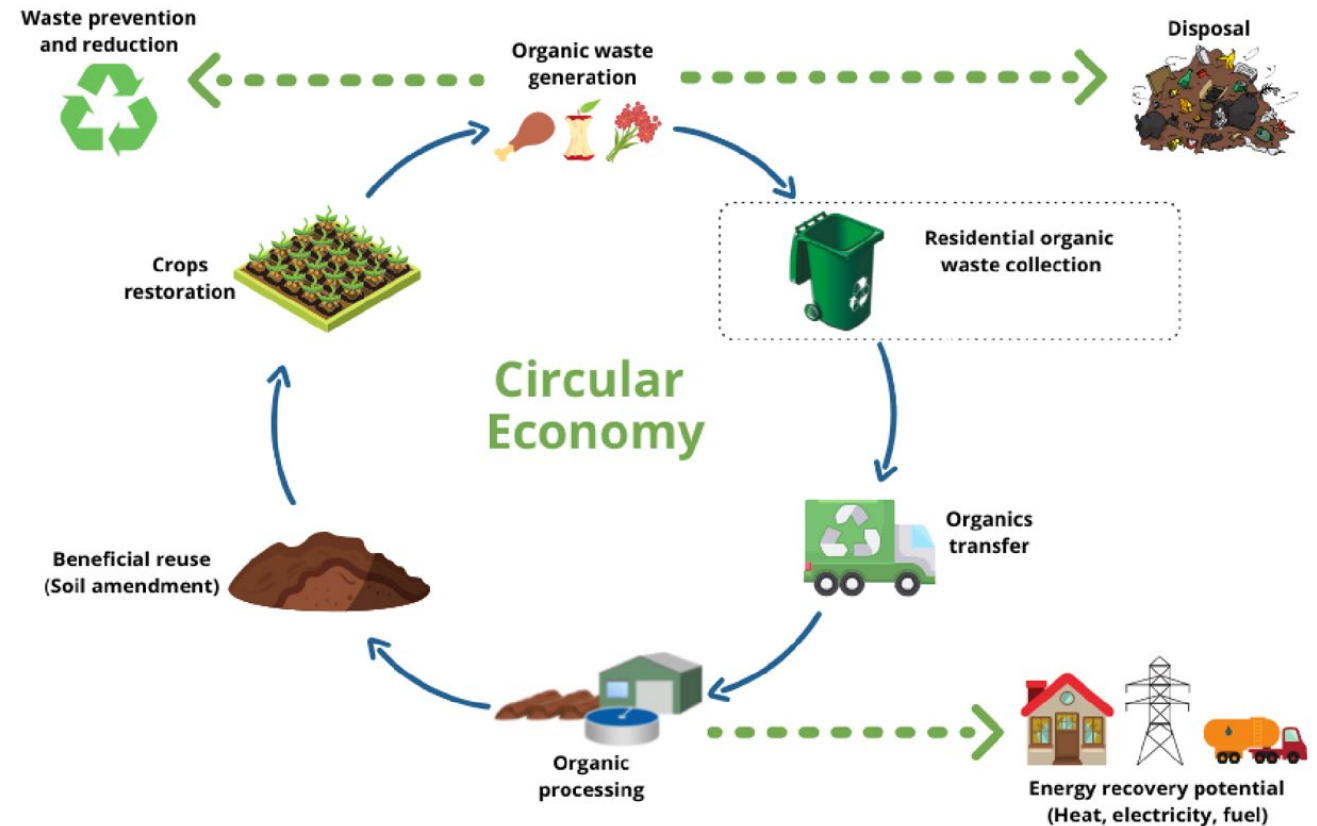
- Emphasize the importance of waste prevention and diversion (recycling and organics diversion)



# Guiding Principles

## 3. Maximize beneficial use of waste materials, such as turning food waste into compost

- Maximize beneficial use of waste materials through local solutions, if possible

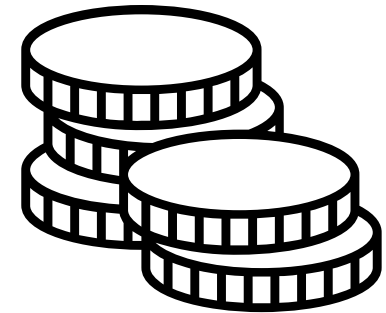
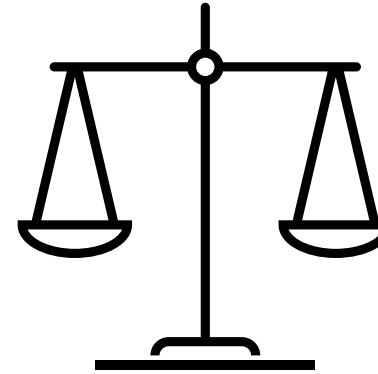




# Guiding Principles

## 4. Support polluter-pay approaches for fees instead of tax increases

- Operate a system of cost recovery through the provision of user-fees and enforcement of disposal bans

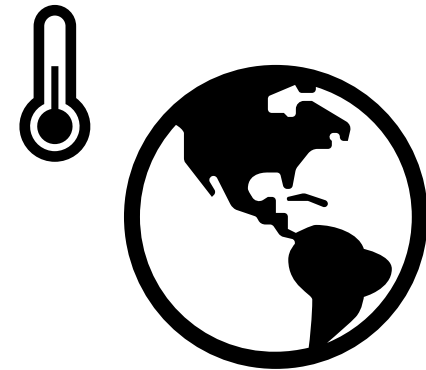


# Guiding Principles

---

## 5. Prevent organics and recyclables from going in the garbage

- Discourage organics and recyclables from going into the garbage to reduce landfill-generated greenhouse gases



# Guiding Principles

---

## **6. Develop collaborative partnerships with interested parties to achieve waste diversion targets**

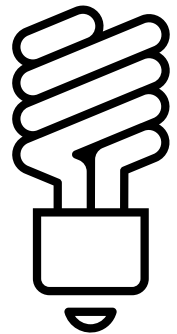
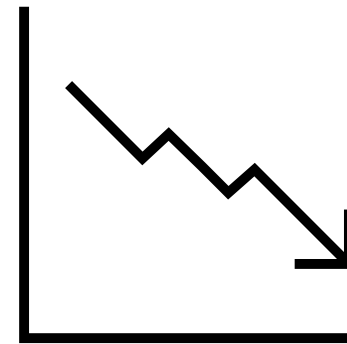
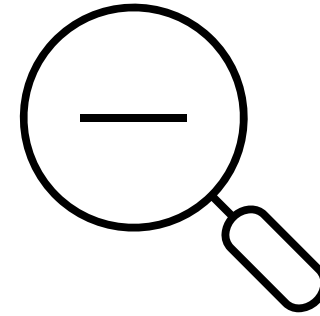
- Collaborate with interested parties, wherever it makes sense
- Identify opportunities to improve partnerships with system users to achieve regional targets



# Guiding Principles

## 7. Explore options that promote cost-effective waste management on the Sunshine Coast

- Find cost-effective solutions (e.g., improving operational efficiency)

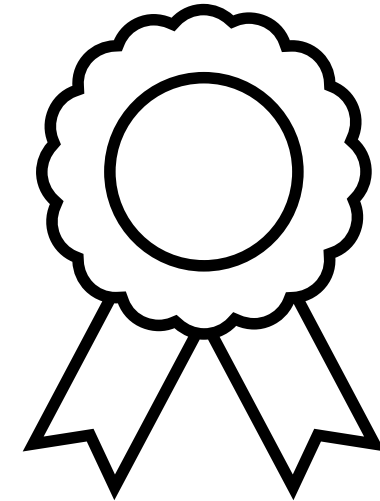


# Guiding Principles

---

## **8. Minimize environmental impacts through reducing GHG emissions from the landfill and promoting proper disposal**

- Manage all waste materials using best practices to limit GHG emissions and protect the environment



# Guiding Principles

## 9. Establish a more equitable playing field for waste disposal across the region

- Make sure waste management facilities within a given region are subject to similar requirements. This can be done through regulations





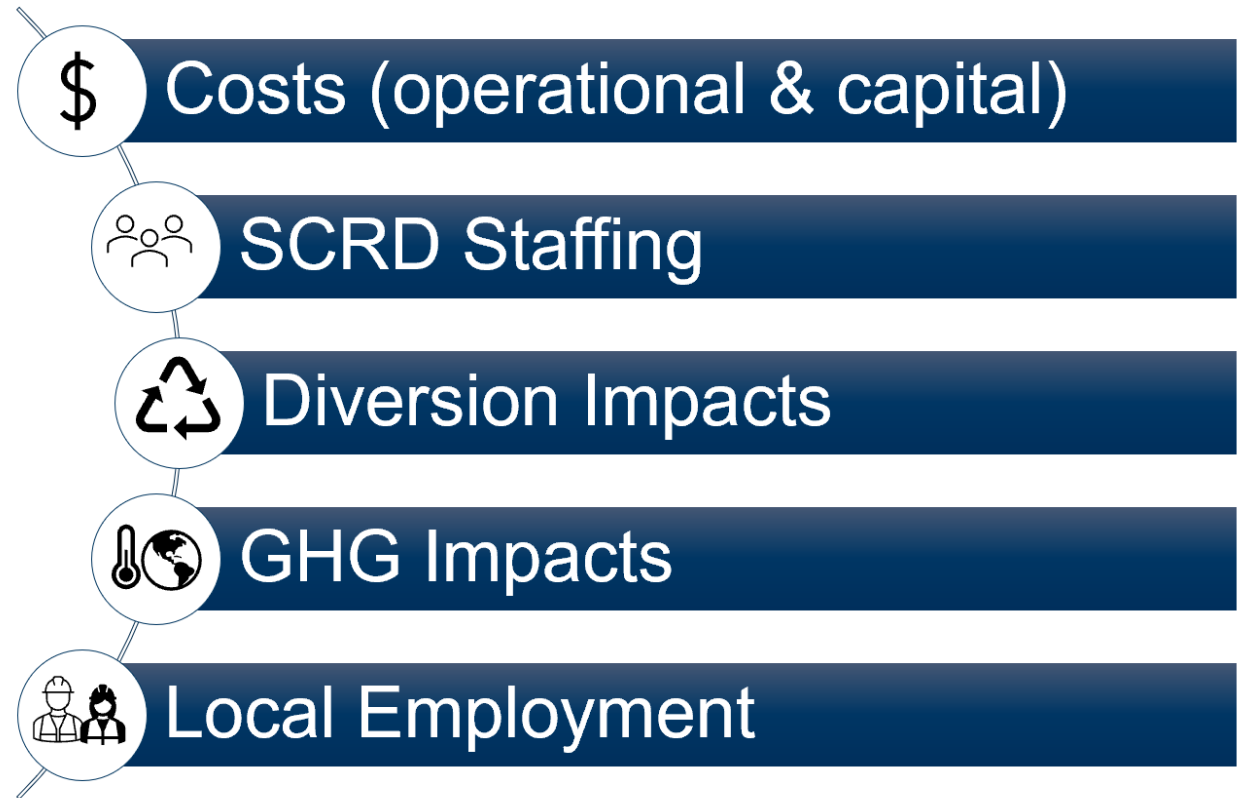
# Guiding Principles



- Vision, goals & guiding principles
- Questions:
  - Do these reflect local needs and priorities?

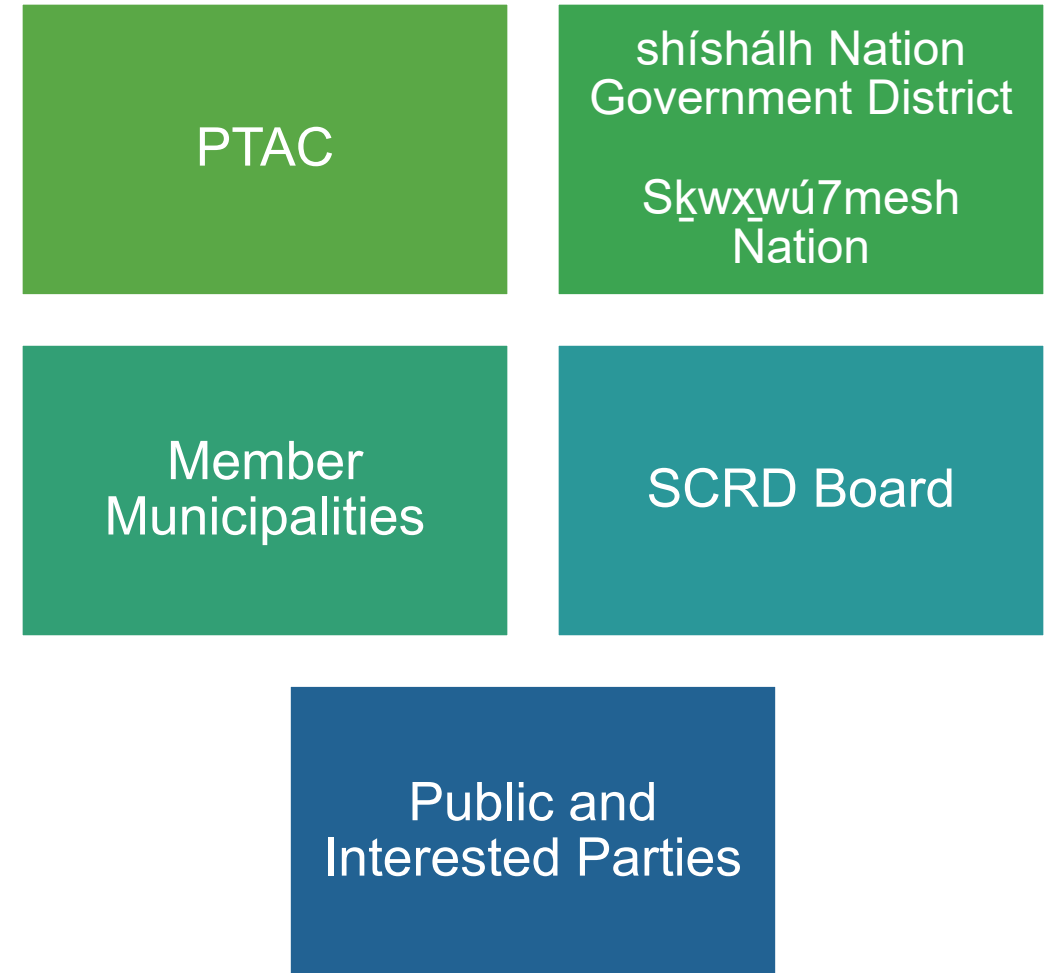
# Proposed Approach for Evaluating Strategies

---



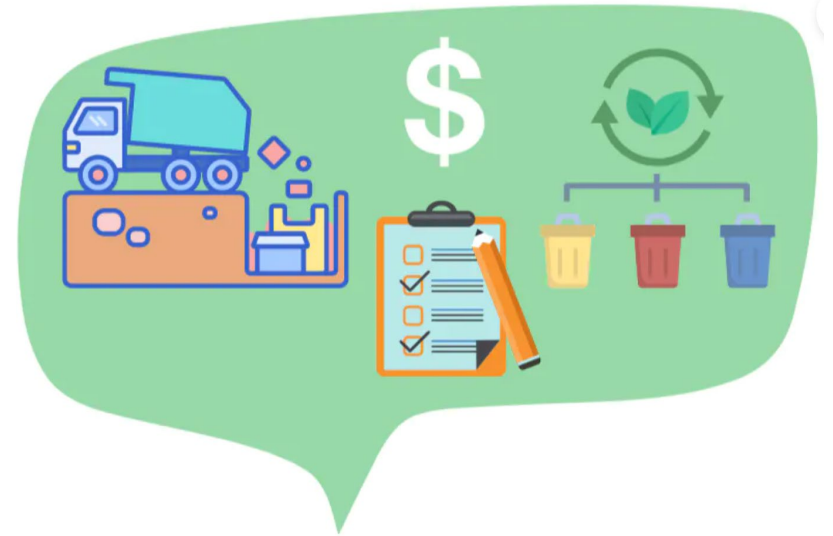
# Consultation Approach

- A Communication & Engagement Plan identifies the overall approach to engagement
- Two or three public engagement periods



# Engagement Period 1 - Feedback form

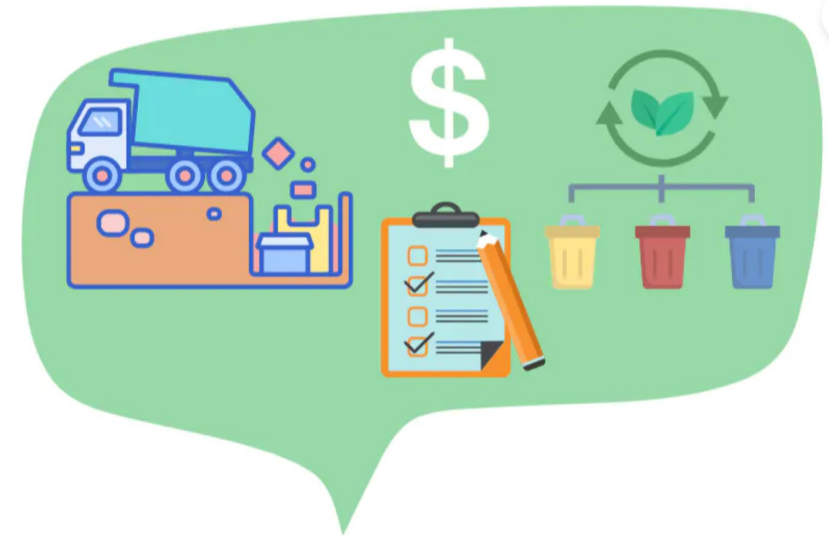
- Which facilities and services do you use regularly?
- Help to prioritize the principles guiding
- What else should we consider while updating the Solid Waste Management Plan?



## Let's Talk Trash

# Future Public Engagement Periods

- **Engagement period 2:**  
Consult on long-term waste disposal options (e.g., a new landfill or waste export)
- **Engagement period 3:** Consult on draft Plan. It will incorporate feedback received in the first two engagement periods



# Overview - Issues & Opportunities

---



# Next Steps

## Future topics

- Feedback from the public (Emailed Memo in July-Aug)
- Waste Prevention & Diversion Strategy Options (Fall 2023)
- Disposal options and system financing (2023/24)
- Draft SWMP (2024)



# Questions? Comments?



MORRISON HERSHFIELD

*People • Culture • Capabilities*

Veronica Bartlett  
Senior Solid Waste Planner  
[vbartlett@morrisonhershfield.com](mailto:vbartlett@morrisonhershfield.com)

