

BIOFOULING GUIDE

WHAT IS BIOFOULING?

The growth of organisms (both plant and animal) on submerged objects.

Biofouling accumulation can transport invasive species to new areas.

Some types of biofouling:



Barnacles



Mussels



Tube worms / Serpulid



Fan Worms



Oysters



Sponges

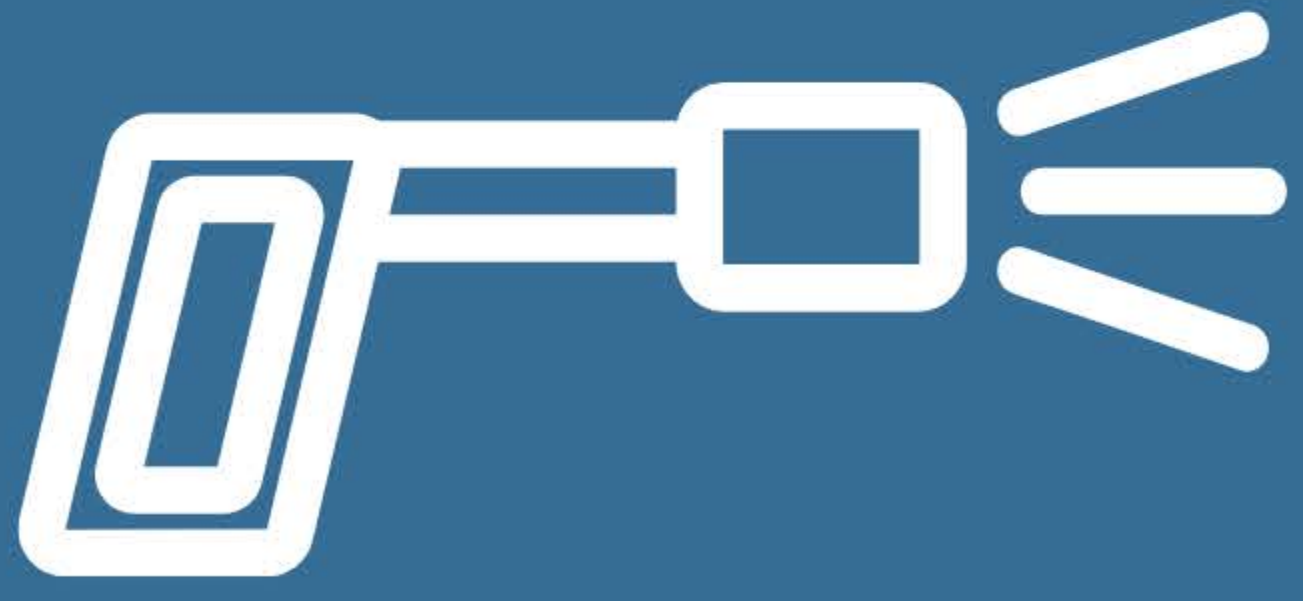
Biofouling is often seen with the mix of different species, as well as microfouling



Highly contaminated material cannot be processed in our facility

PLEASE REMOVE BIOFOULINGS AND CONTAMINATION FROM YOUR COLLECTED MATERIALS

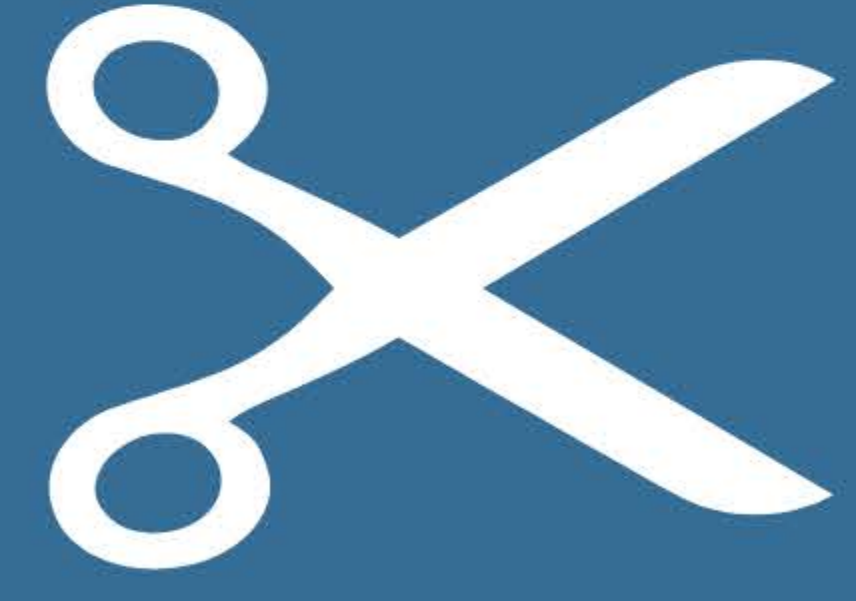
Some Tips:



Pressure wash the material



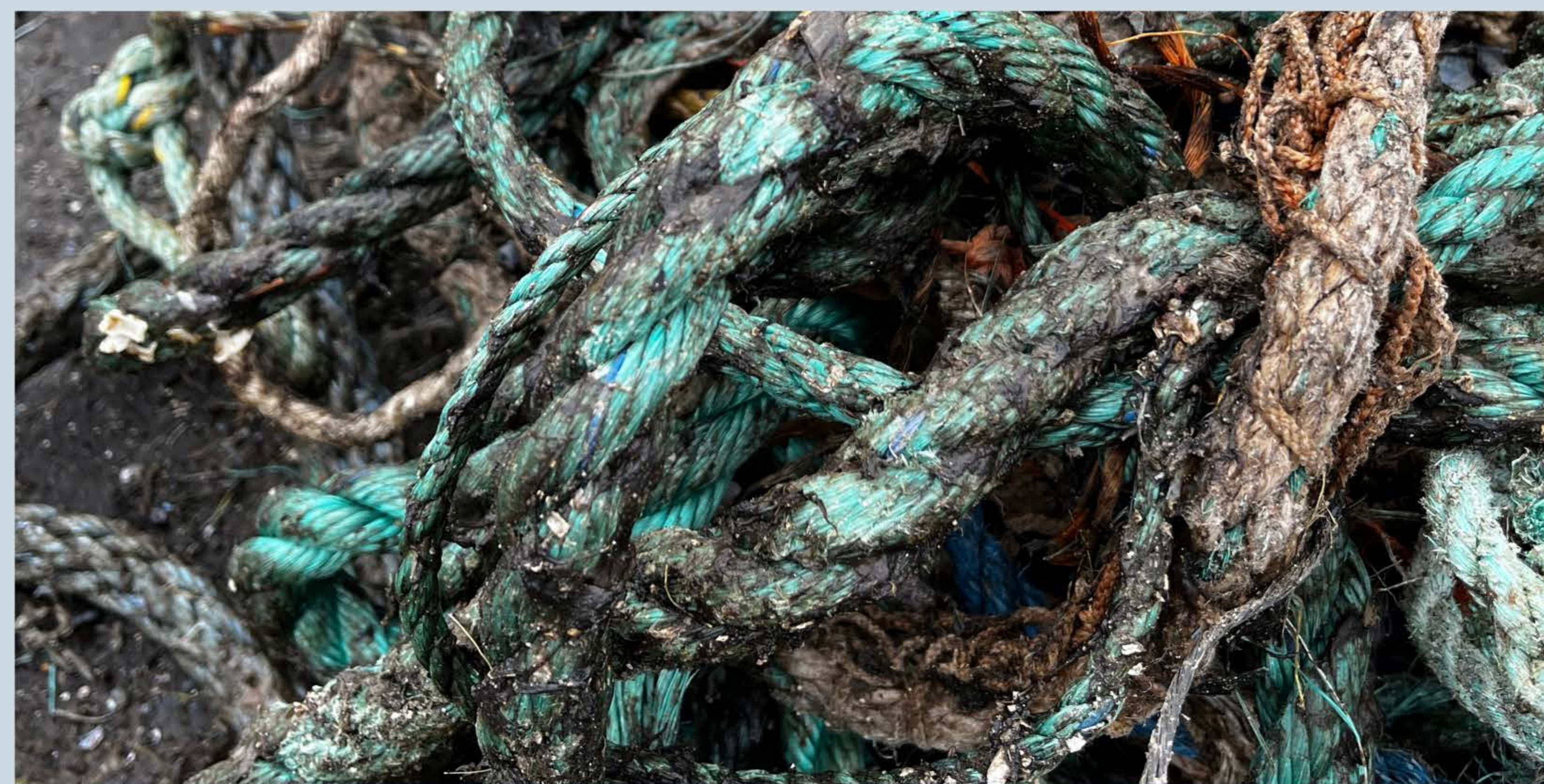
Sun-dry and shake to break biofouling off



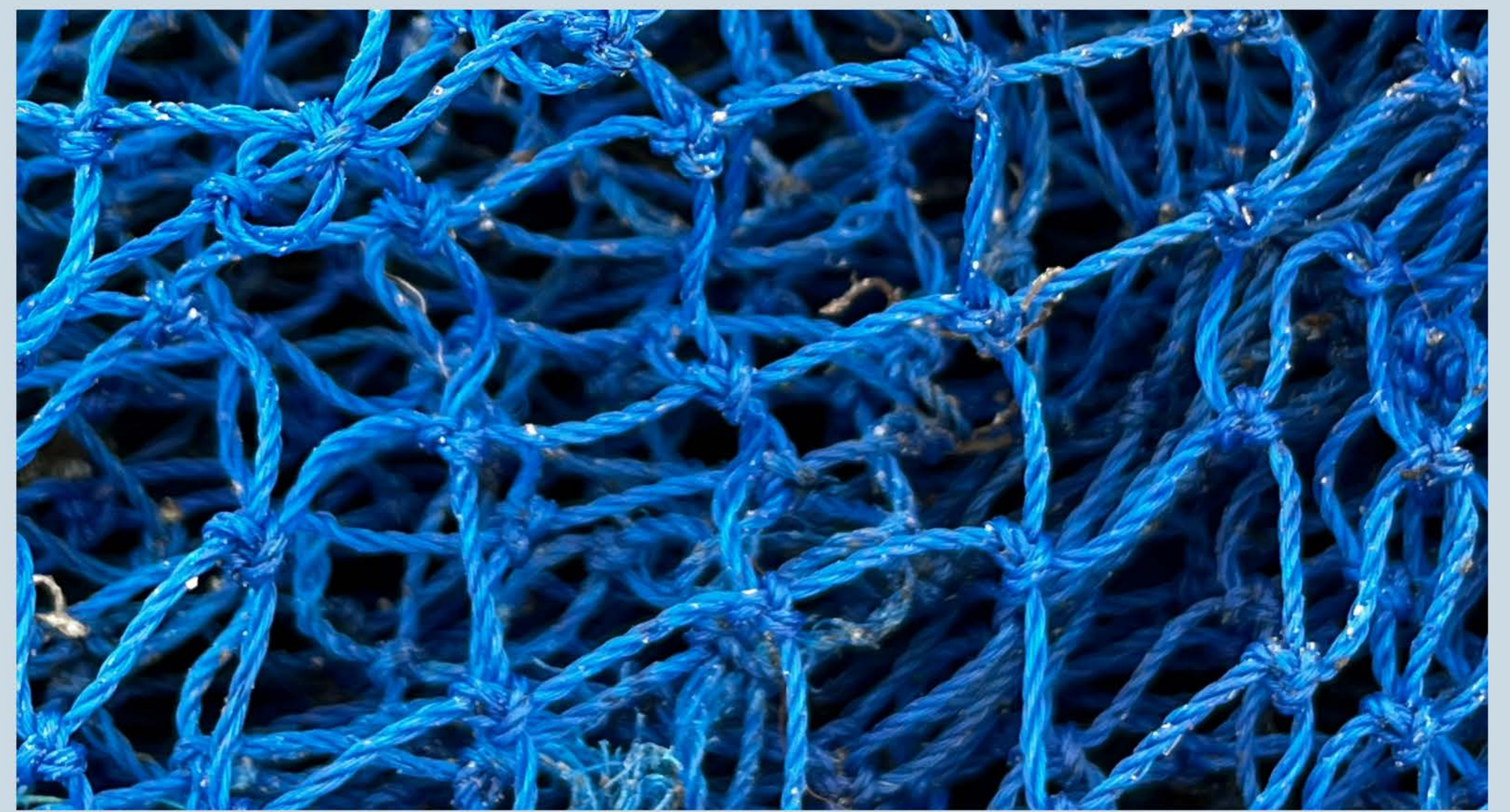
Remove or cut knots out of rope

We aim for extremely low contamination.

Before:



After:



Knots are considered contamination. Please remove.



We are transforming these materials into multiple products such as our Legacy Plastic Pellets, and benches!