



Sunshine Coast Regional District

WATER SERVICE SHUTOFF NOTICE

Please be advised that your water service will be shut off on:

Tuesday October 30/2024 from 8:00 a.m. until approximately 4:00p.m.

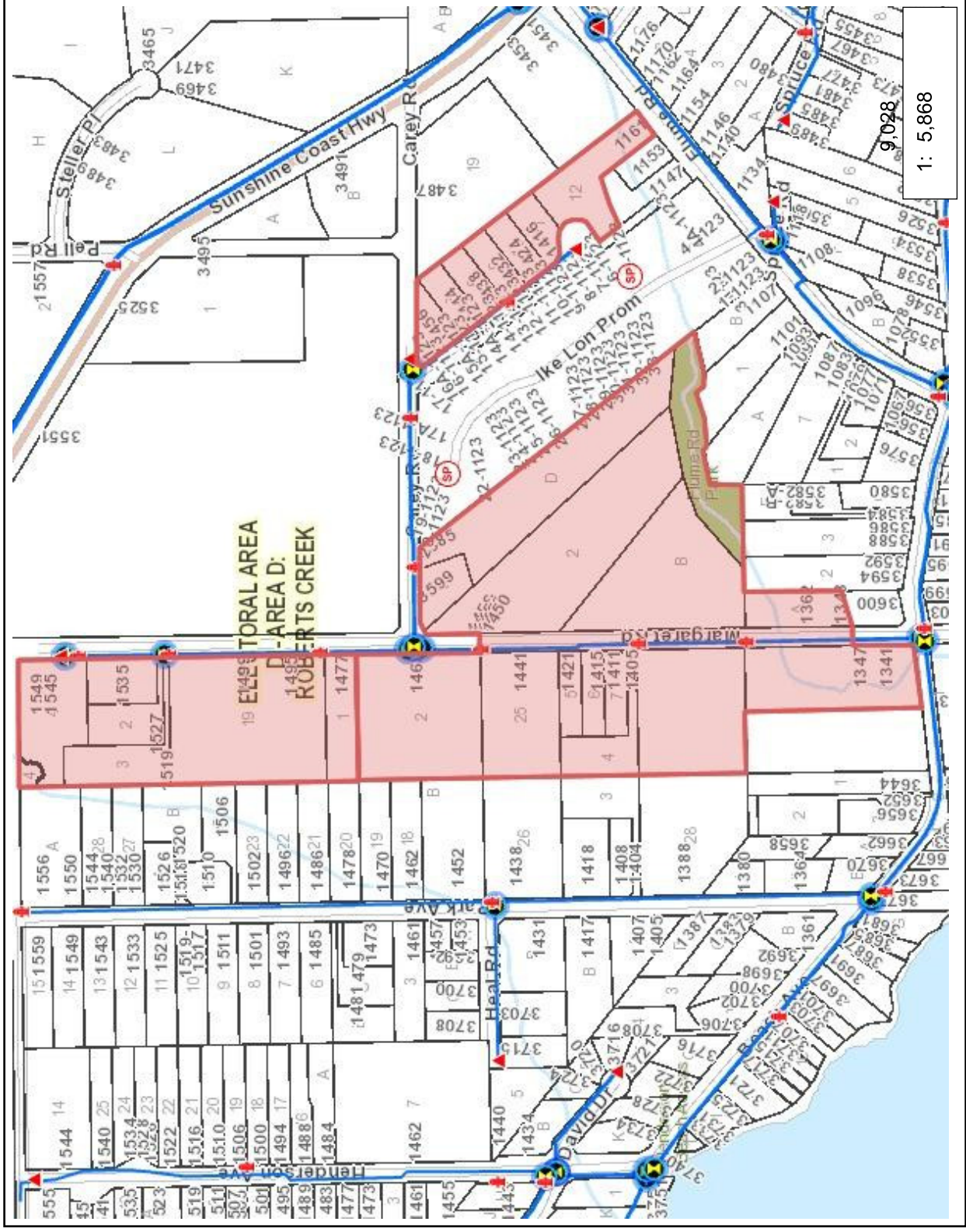
This water service interruption is necessary to complete work on the water main in your area.

You should take such measures as may be necessary to protect your hot water unit or other plumbing installations against possible damage. Ensuring you have a check valve on your water line, closing your private water shut off or flipping the electrical breaker to your hot water tank are ways to protect your hot water appliance. The Regional District accepts no liability for damage resulting from interrupted service.

Thank you for your co-operation.

SCRD Office

Phone: 604-885-6895



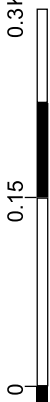
Legend

- PRV
 - Abandoned/Inactive
 - Active
- Water Pump
- Distribution Meter
- Blowoff
- Hydrant
- Stand Pipe
- Sample Stations
- Chlorination Station
- Pump Station
 - Active
 - Inactive
- Valves
 - Air Valve
 - Altitude Valve
 - Check Valve
 - Main Valve (Normally closed)
 - Main Valve (Normally Open)
- Reservoirs
 - Active
 - Inactive
- Water Treatment Plant
- Water Intake



This information has been compiled by the Sunshine Coast Regional District (SCRD) using data derived from a number of sources with varying levels of accuracy. The SCR D disclaims all responsibility for the accuracy or completeness of this information.

0.5
0.3 Kilometers



0.5

1: 5,868