



SUNSHINE COAST REGIONAL DISTRICT

AMENDMENT NO.#4

Request for Proposal No. 2536503

Watermain Replacement North Pender Harbour

Date: November 27, 2025

This addendum forms part of the contract documents and shall be read, interpreted, and coordinated with all other parts. The costs of all work contained herein shall be included in the tender submission. The following revisions, clarifications, changes, additions, or deletions supersede the information contained in the original documents to the extent referenced and shall become part thereof:

Number of pages including attachments: #3

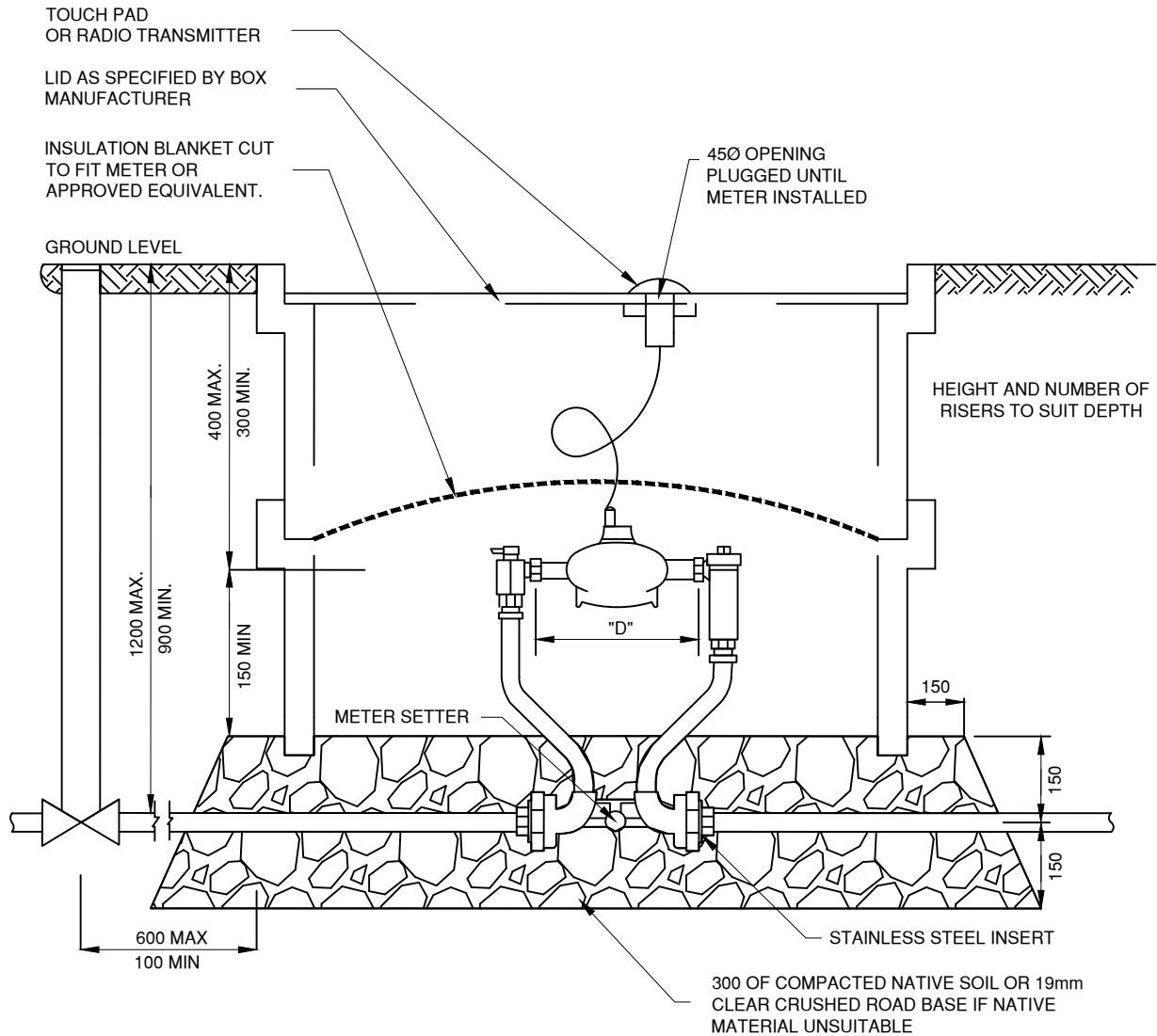
Item No.1 Attachment B Reference Drawings

Add new standard detail drawings W2E and W2F

Amendment No.4 is issued prior to receipt of submission and shall form part of the contract documents. The revisions shall clarify the information contained in the original Proposal documents issued on October 24, 2025

SCRD

STANDARD DETAIL DRAWINGS



SETTERS TO BE FORD VBHH, MANUFACTURED IN PLACE OR APPROVED EQUIVALENT

NOTES:

1. METER TO BE SUPPLIED AND INSTALLED BY SUNSHINE COAST REGIONAL DISTRICT.
2. METER SETTERS TO HAVE SADDLE NUTS AT METER INLET AND OUTLET, BE EQUIPPED WITH BYPASS LOCKABLE INLET VALVE, LOCKABLE BYPASS VALVE IF APPLICABLE, AND CHECK VALVE OUTLET.
3. METER BOX TO BE ARMTEC AE UTILITY BOX OR APPROVED EQUIVALENT.
4. REFER TO DRAWING NUMBER W2B FOR DETAIL OF SERVICE CONNECTION.
5. ALL MEASUREMENTS IN MILLIMETERS UNLESS STATED OTHERWISE.

METER SETTER SPACING AND TYPE		
METER SIZE	"D"	METER BOX
16mm	191mm	ARMTEC AE B937
19mm	229mm	
25mm	273mm	ARMTEC AE T266
38mm	330mm	ARMTEC AE 5696
50mm	430mm	

**METER INSTALLATION
IN VEHICULAR TRAFFIC AREAS**

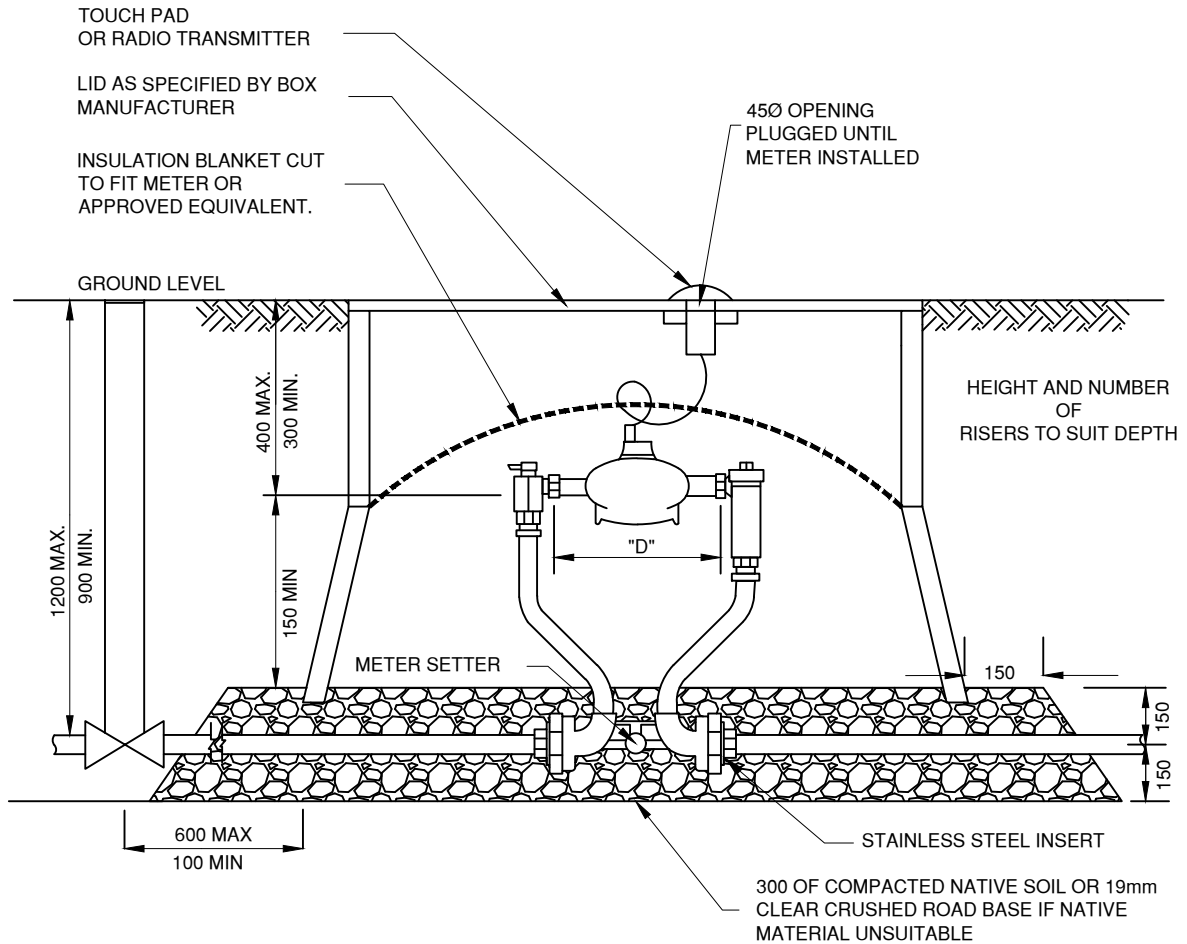
NOT TO SCALE

DRAWING NUMBER:

W2E

SCRD

STANDARD DETAIL DRAWINGS



SETTERS TO BE FORD VBHH, MANUFACTURED IN PLACE OR APPROVED EQUIVALENT

NOTES:

1. METER TO BE SUPPLIED AND INSTALLED BY SUNSHINE COAST REGIONAL DISTRICT.
2. METER SETTERS TO HAVE SADDLE NUTS AT METER INLET AND OUTLET, BE EQUIPPED WITH BYPASS LOCKABLE INLET VALVE, LOCKABLE BYPASS VALVE IF APPLICABLE, AND CHECK VALVE OUTLET.
3. METER BOX TO BE ARMOR UTILITY BOX OR APPROVED EQUIVALENT.
4. REFER TO DRAWING NUMBER W2B FOR DETAIL OF SERVICE CONNECTION.
5. ALL MEASUREMENTS IN MILLIMETERS UNLESS STATED OTHERWISE.

METER SETTER SPACING AND TYPE		
METER SIZE	"D"	METER BOX
16mm	191mm	ARMOR STANDARD
19mm	229mm	
25mm	273mm	ARMOR JUMBO
38mm	330mm	ARMOR XL
50mm	430mm	

**METER INSTALLATION
IN NON-VEHICULAR TRAFFIC AREAS**

NOT TO SCALE

DRAWING NUMBER:

W2F