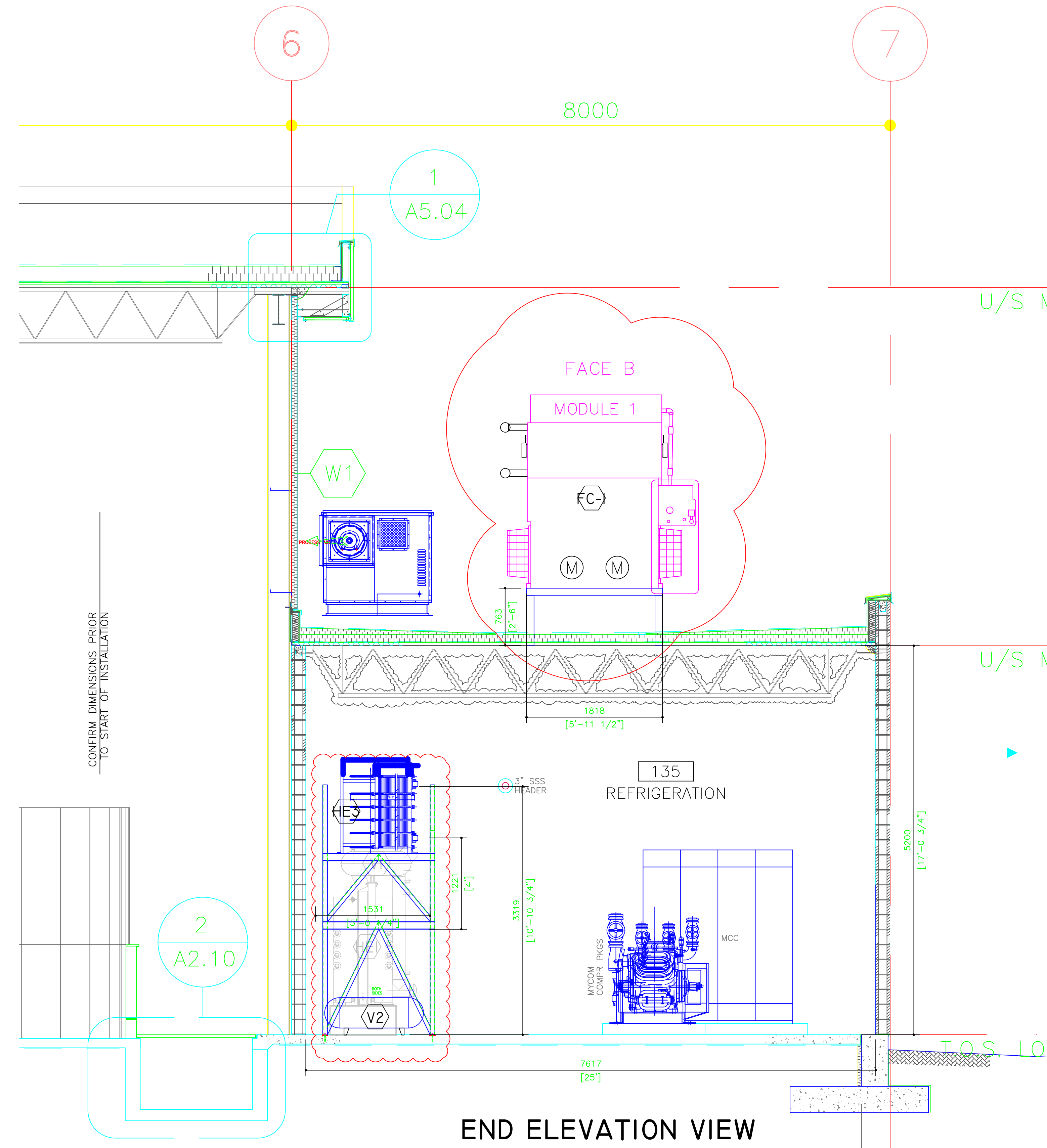
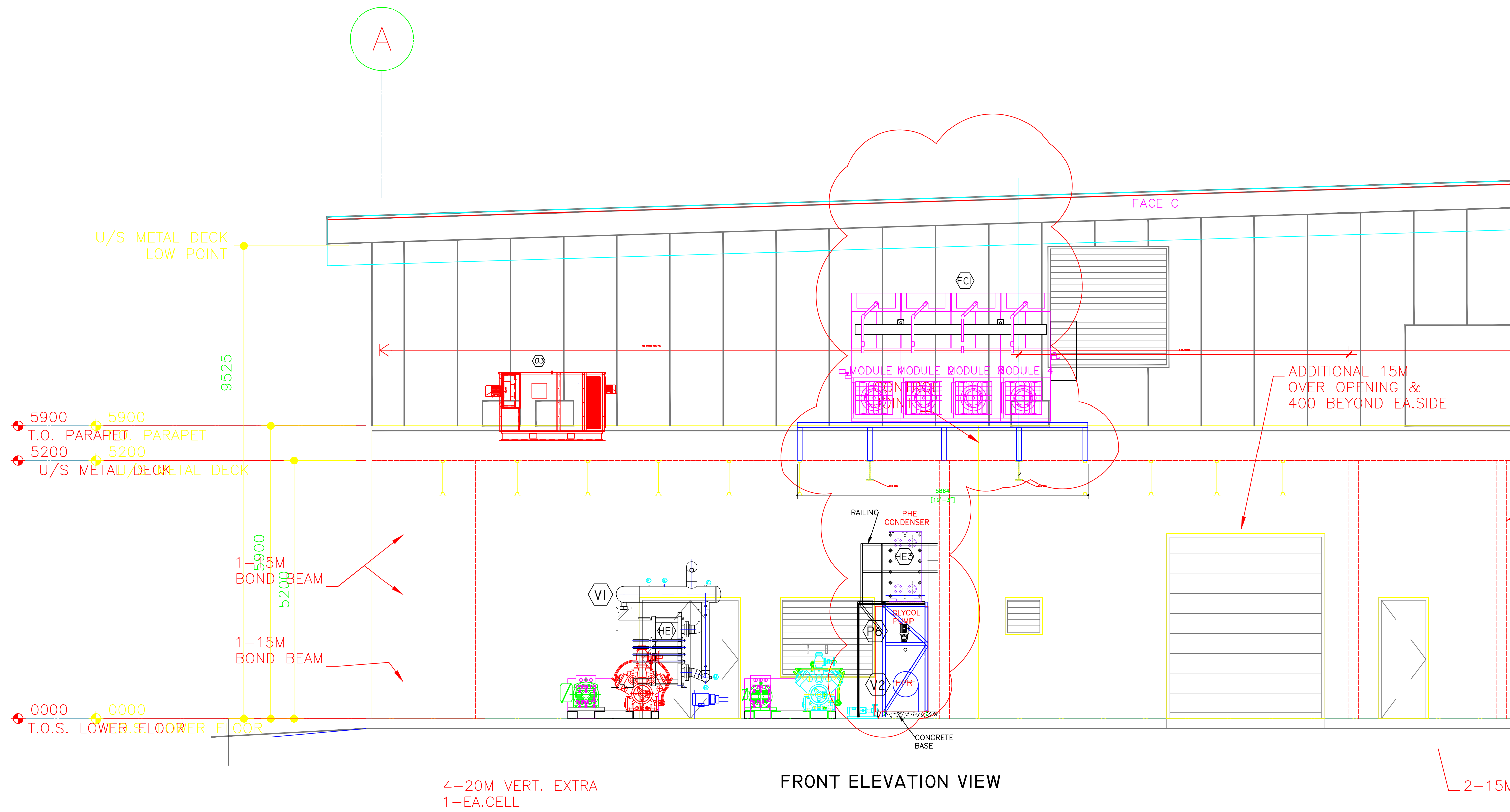


PLAN VIEW



END ELEVATION VIEW



FRONT ELEVATION VIEW

EQUIPMENT IDENTIFICATION	
C-1	MYCOM N6WB COMPRESSOR C/W 100 HP MOTOR, 2006
C-2	MYCOM N4WB COMPRESSOR C/W 75 HP MOTOR, 2006
HE-1	ALFA LAVAL PLATE & FRAME AMMONIA/BRINE CHILLER 120 TR, 9 F SUCTION, 2024
HE-3	P&F CONDENSER ALFA LAVAL M10BW-FD, 2026
HE-4	GLYCOL/BRINE HEAT EXCHANGER, 2026
HE-5	SNOW MELT HEATING COIL, 2006
CC-1	GLYCOL FLUID COOLER - BAC NXF-0603N-CS2TS-J4, 2026
V-1	ALFA LAVAL CHILLER U-TURN SURGE DRUM, 2024
V-2	PLOT HIGH PRESSURE RECEIVER, 2026
V-3	CHIL-COM COS140 OIL SEPARATOR, 2006
V-4	CHIL-COM COS070 OIL SEPARATOR, 2006
V-5	EXTERNAL OIL POT, 2024
ET-1	COLD BRINE EXPANSION TANK, 120GAL, 2024
ET-2	
ET-3	U/S WARM BRINE EXPANSION TANK, 2006
ET-4	COMPRESSOR GLYCOL EXPANSION TANK, 2006
ET-5	WARM GLYCOL EXPANSION TANK, 2026
HT-1	HOLDING TANK FOR GLYCOL RELIEF VALVE, 2021
HT-2	HOLDING TANK FOR BRINE RELIEF VALVE, 2024
HT-3	HOLDING TANK FOR GLYCOL RELIEF VALVE, 2026
T-1	WATER AMMONIA DIFFUSION TANK, 2026
P-1	ARMSTRONG COLD BRINE PUMP, 25 HP, 2024
P-2	SNOW MELT GLYCOL PUMP, 2006
P-3	ARMSTRONG U/S WARM BRINE PUMP, 2006
P-4	
P-5	COMPRESSOR OIL COOLING GLYCOL PUMP, 2024
P-6	WARM GLYCOL CIRCULATING PUMP, 2026

- NOTES:
- ALL PIPES OR DUCTS PIERCING THE COMPRESSOR ROOM ENVELOP SHALL BE TIGHTLY SEALED TO THE ENVELOP THROUGH WHICH THEY PASS.
 - REFRIGERATION CONTRACTOR IS TO CONFIRM THE EQUIPMENT LAYOUT & REFRIGERATION PIPING DETAILS PRIOR TO START OF PROJECT.
 - THE DIMENSIONS SHOWN ON THIS DRAWINGS ARE JUST FOR REFERENCE. CONTRACTOR SHALL CONFIRM DIMENSIONS ON SITE FOR THE FINAL EQUIPMENT LAYOUT AND STRUCTURAL SUPPORT DESIGN.
 - THE STRUCTURAL BASE & STEEL SUPPORT FOR THE PLATE & FRAME CONDENSER AND ROOFTOP INSTALLED FLUID COOLER SHALL BE DESIGNED BY A STRUCTURAL ENGINEER.

No.	DATE	DESCRIPTION
2	05NOV2025	IFT
1	25OCT2025	FIRST REVISION FOR REVIEW

REFRIGERATION DRAWINGS ARE THE PROPERTY OF JS REFRIGERATION ENGINEERING AND MAY NOT BE REPRODUCED WITHOUT THE JS REFRIGERATION ENGINEERING'S PERMISSION.

2026 HIGH SIDE REPLACEMENT UPGRADE
REFRIGERATION CONSULTANTS
JS REFRIGERATION ENGINEERING INC.
JS REFRIGERATION ENGINEERING INC.
2024 CHILLER REPLACEMENT UPGRADE
REFRIGERATION CONSULTANTS
JS REFRIGERATION ENGINEERING INC.
JS REFRIGERATION ENGINEERING INC.

GIBSONS AREA COMMUNITY CENTER
ICE PLANT REFRIGERATION
2026 UPGRADES

GIBSONS AREA COMMUNITY CENTER
ICE PLANT REFRIGERATION
2026 UPGRADES
REFRIGERATION LAYOUT
PLAN, ELEVATION, & END VIEW

DATE PLOTTED: N T S
SCALE: N T S
DRAWN: GH
REVIEWED: JS
PROJECT No: 3185
REV No: DWG No:
3185-R2