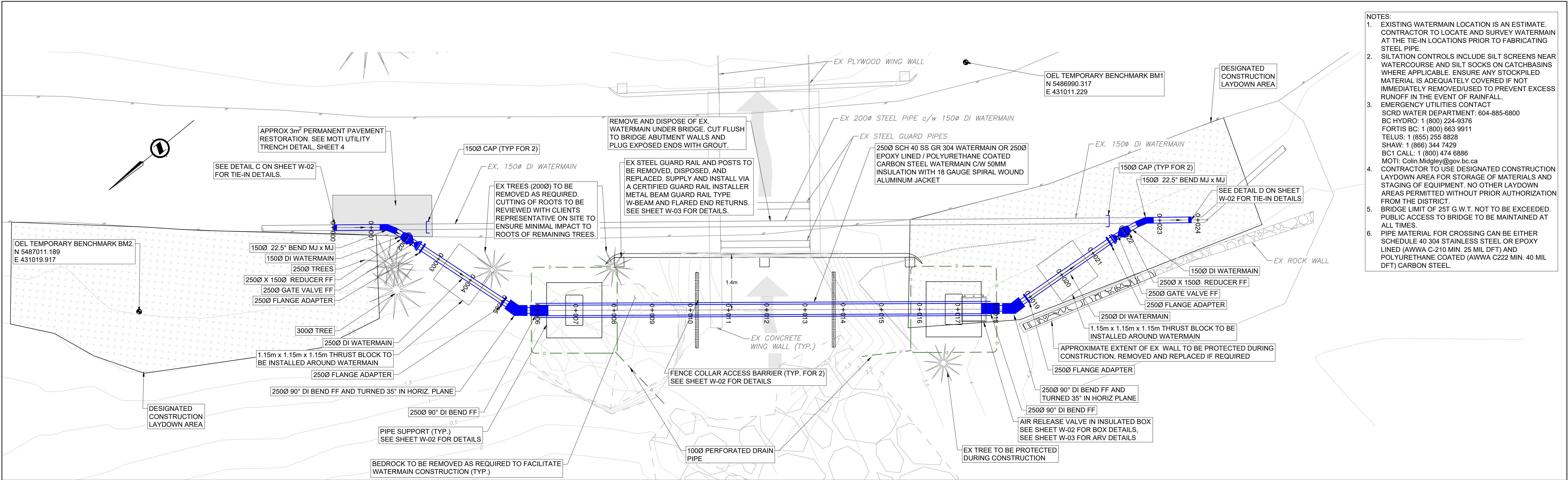


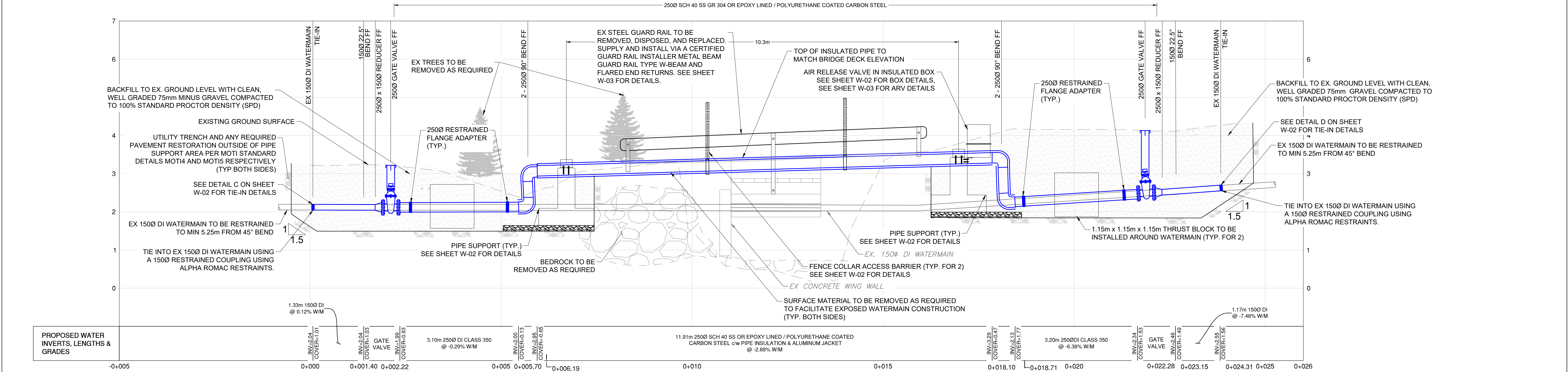
NOT FOR CONSTRUCTION








PLAN  
SCALE 1:50

- NOTES:
- EXISTING WATERMAIN LOCATION IS AN ESTIMATE. CONTRACTOR TO LOCATE AND SURVEY WATERMAIN AT THE TIE-IN LOCATIONS PRIOR TO FABRICATING STEEL PIPE.
  - SILTATION CONTROLS INCLUDE SILT SCREENS NEAR WATERCOURSE AND SILT SOCKS ON CATCHBASINS WHERE APPLICABLE. ENSURE ANY STOCKPILED MATERIAL IS ADEQUATELY COVERED IF NOT IMMEDIATELY REMOVED/USED TO PREVENT EXCESS RUNOFF IN THE EVENT OF RAINFALL. EMERGENCY UTILITIES CONTACT
  - SCRD WATER DEPARTMENT: 604-885-6800  
BC HYDRO: 1 (800) 224-9376  
FORTIS BC: 1 (800) 663 9911  
TELUS: 1 (855) 255 8828  
SHAW: 1 (866) 344 7429  
BC1 CALL: 1 (800) 474 8886  
MOTI: Colin.Midgley@gov.bc.ca
  - CONTRACTOR TO USE DESIGNATED CONSTRUCTION LAYDOWN AREA FOR STORAGE OF MATERIALS AND STAGING OF EQUIPMENT. NO OTHER LAYDOWN AREAS PERMITTED WITHOUT PRIOR AUTHORIZATION FROM THE DISTRICT.
  - BRIDGE LIMIT OF 25T G.W.T. NOT TO BE EXCEEDED. PUBLIC ACCESS TO BRIDGE TO BE MAINTAINED AT ALL TIMES.
  - PIPE MATERIAL FOR CROSSING CAN BE EITHER SCHEDULE 40 304 STAINLESS STEEL OR EPOXY LINED (AWWA C-210 MIN. 25 MIL DFT) AND POLYURETHANE COATED (AWWA C222 MIN. 40 MIL DFT) CARBON STEEL.

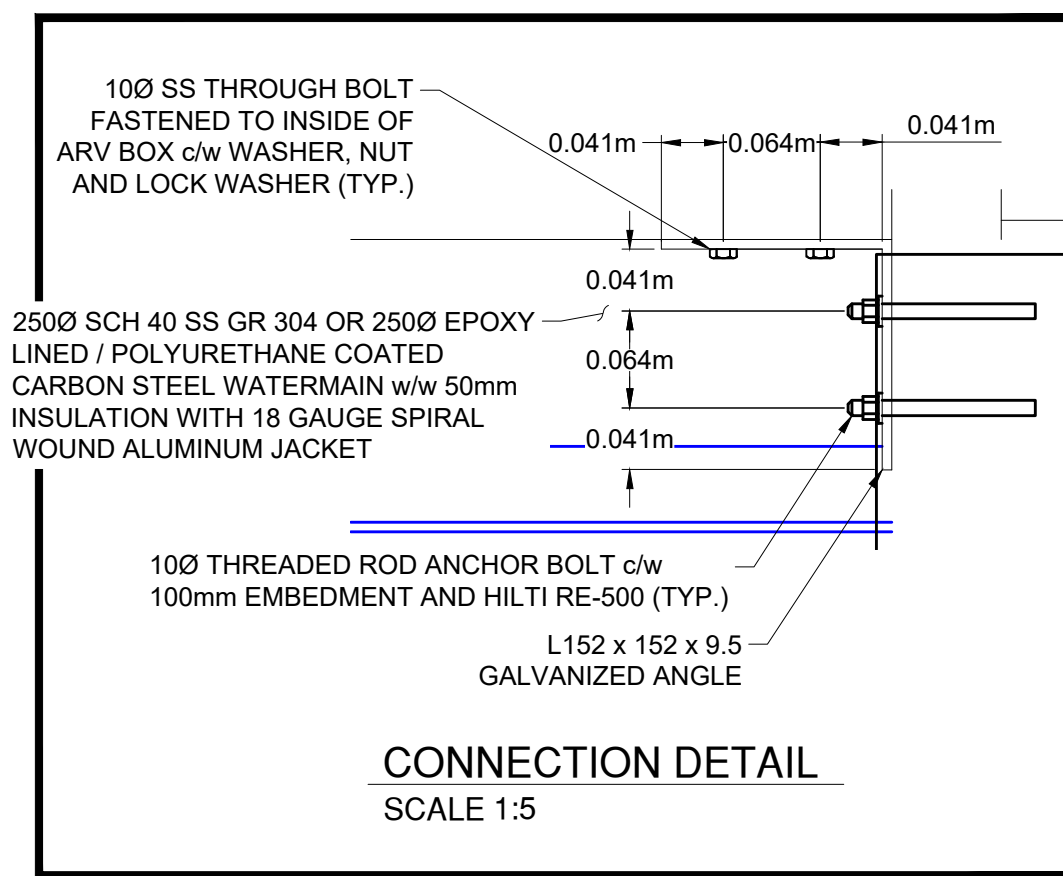
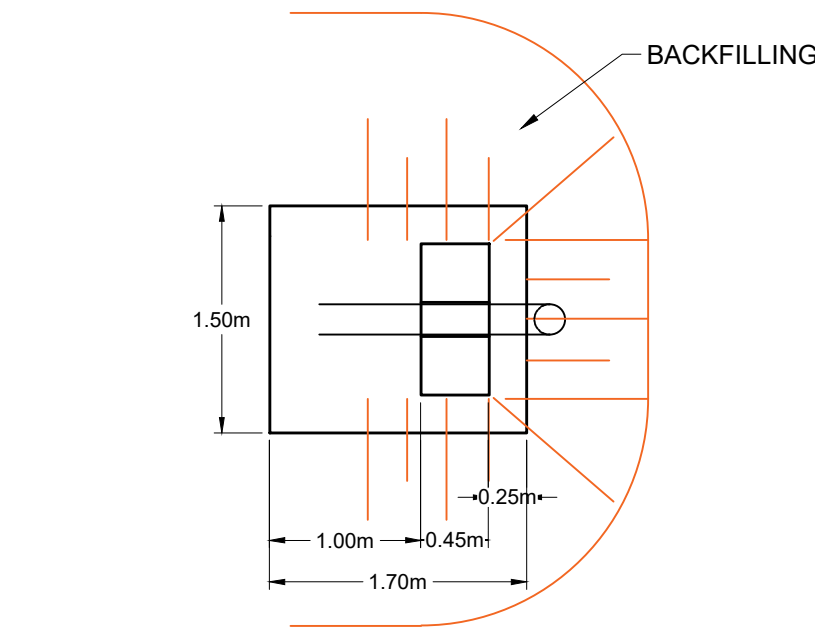


PROFILE  
SCALE 1:50

NOT FOR CONSTRUCTION

REVISIONS		 <div><div>SUNSHINE COAST REGIONAL DISTRICT</div><div>ISSUED FOR TENDER2023-05-25</div></div>	<div><div>SUNSHINE COAST REGIONAL DISTRICT INFRASTRUCTURE DEPARTMENT</div><div>1975 Field Road Sechelt, BC V0N 3A1 Ph: 604-885-6800 1-800-687-5753 Fax: 604-885-7909</div></div>	DESIGNED BY:	MOR	 <div><div>ONSITE Engineering Ltd.</div><div>ABBOTSFORD OFFICE #103-32310 SOUTH FRASER WAY ABBOTSFORD, BC V2T 1X1 PH: 604-309-1788 FAX: 866-235-6943 EGBC PERMIT TO PRACTICE No. 1002678</div></div>	DRAWING :	 <div><div>SEAL :</div><div>PROFESSIONAL ENGINEER J. A. McALLISTER # 30903 BRITISH COLUMBIA</div></div>	WORK ORDER NO.	# 123854
				DRAWN BY:	JG		DRAWING NO:		W-01	
				CHECKED BY:	JM					
				APPROVED BY:	JM					
				SCALE	H 1:50 V 1:50					
				PLOT DATE:	2023-05-25					
ISSUED FOR TENDER2023-05-25						SANS SOUCI ROAD WATERMAIN REPLACEMENT STA 0+000 TO 0+025 PLAN AND PROFILE		SHEET NO :	02 of 04	





WORK ORDER NO.	# 123854
DRAWING NO:	W-02
SHEET NO :	03 of 04



SCRD

STANDARD DETAIL DRAWINGS

1. ALL WORK SHALL CONFORM TO THE MOST RECENT EDITION OF THE SUNSHINE COAST REGIONAL DISTRICT (SCRD) DESIGN AND CONSTRUCTION SPECIFICATIONS AND STANDARD DRAWINGS, AS WELL AS THE MASTER MUNICIPAL CONSTRUCTION DOCUMENTS. SPECIFICATIONS TAKE PRECEDENCE.

2. ALL NEW HIGH DENSITY POLYETHYLENE WATERMAINS SHALL BE DE 15.

3. ALL NEW DUCTILE IRON WATERMAINS SHALL BE PRESSURE CLASS 300.

4. WATERMAIN SHALL BE INSTALLED WITH 1.2m EXISTING COVER UNDER ROADWAYS AND 1.0m ELSEWHERE. WATERMAIN SHALL BE INSTALLED TO SUIT MINIMUM GROUND CONDITIONS. HOPE AND PVC WATERMAINS ARE TO BE USED WITH TRACER WIRE.

5. EXISTING WATER SERVICE LOCATIONS AND SIZES TO BE DETERMINED PRIOR TO CONSTRUCTION. INSTALL THE NEW WATER SERVICES. COMPLETE WITH NEW CURB STOP AND METER BOX AS REQUIRED, AT THE SAME ELEVATION AS THE EXISTING CONNECTION.

6. ALL EXISTING UNDERGROUND UTILITIES (INCLUDING STORM SANITARY, WATERMAINS, GAS MAINS, ELECTRICAL, TELEPHONE, STRENGTHING, ETC.) CROSSING ABOVE THE COMPLETE PROPOSED WATERMAIN ALIGNMENT, INCLUDING TIE-IN LOCATIONS, SHALL BE LOCATED AND EXPOSED AND DEPTHS OF ALL UTILITIES RECORDED. THE WORK TO PRECEDE WATERMAIN INSTALLATION BY THE DISTANCE REQUIRED TO ENSURE THAT THE LINE AND GRADE OF THE PROPOSED WATERMAIN CAN BE ADJUSTED TO SUIT FIELD CONDITIONS AS REQUIRED AND TO ENSURE THAT THE TEMPORARY END OF THE WATERMAIN ARE SET TO ACCEPTABLE ELEVATIONS. DEE PROPOSED WATERMAIN 3.0m FROM TIE-IN LOCATIONS. ALL TIE-INS TO EXISTING WATERMAINS WILL BE COMPLETED AFTER TESTING AND FLUSHING.

7. PROTECTION OF THE WATERMAIN: PARALLEL LINES: WATERMAINS SHALL BE LAID AT LEAST 3m HORIZONTALLY FROM ANY SANITARY OR STORM SEWER. WHERE THIS HORIZONTAL SEPARATION IS NOT POSSIBLE, THE BOTTOM OF THE WATERMAIN SHALL BE AT LEAST 0.3m ABOVE THE TOP OF THE SEWER AND SUFFICIENT TO ONE SIDE OF THE SEWER TO ALLOW FOR SEWER REPAIRS WITHOUT DISTURBING THE WATERMAIN. IF THIS VERTICAL SEPARATION IS NOT POSSIBLE, THE SEWER SHALL BE OF THE SAME SERVICE CAPABILITY AS THE WATERMAIN, WITH PRESSURE CLASS JOINTS DESIGNED TO REMAIN WATER TIGHT IF THE GROUNDWATER TABLE PERIODICALLY RISES ABOVE THE SEWER, AND ARE PRESURE TESTED BEFORE BACKFILLING. ALL JOINTS WITHIN 3m OF THE SANITARY OR STORM SEWER SHALL BE EITHER WRAPPED WITH HEAT SHRINK PLASTIC OR PACKED WITH HEAT RETICULATION COMPOUND AND WRAPPED IN TAPE IN ACCORDANCE WITH AN/ANWA STANDARDS C209 AND C217 OR INCREASED IN ACCORDANCE WITH MMCD STANDARDS 68 AND 67.

8. CROSSINGS: WHERE A WATERMAIN CROSSES A SANITARY OR STORM SEWER, THE LINES SHALL BE LAID WITH THE WATERMAIN CROSSING OVER THE SEWER AND WITH THE MIDDLE OF PIPE LINES LOCATED AT THE CROSSING POINT, TO MAXIMIZE THE SEPARATION BETWEEN THE JOINTS. WHERE A MINIMUM 3m JOINT SEPARATION AND/OR MINIMUM 0.5m CLEAR VERTICAL SEPARATION IS NOT POSSIBLE AT THE CROSSING, PRECAUTIONS TO IMPROVE WATER TIGHTNESS OF THE SEWER JOINTS AND STRUCTURAL IMPROVEMENTS SUCH AS HIGHER STRENGTH WATERMAIN AND/OR SEWER AT THE CROSSING AREA ARE REQUIRED. ALL JOINTS WITHIN 3m OF THE CROSSING SHALL BE EITHER WRAPPED WITH HEAT SHRINK PLASTIC OR PACKED WITH HEAT RETICULATION COMPOUND AND WRAPPED IN TAPE IN ACCORDANCE WITH AN/ANWA STANDARDS C209 AND C217 OR INCREASED IN ACCORDANCE WITH SCRD STANDARDS 66.

9. ALL WATER SERVICE CONNECTIONS TO BE 25mm DIAMETER TYPE C COPPER SERVING PIPE FROM PROPERTY LINE TO THE NEW WATERMAIN UNLESS NOTED OTHERWISE.

10. THRUST BLOCKS TO BE PROVIDED AT ALL FITTINGS AND CHANGES IN DIRECTION UNLESS NOTED OTHERWISE. WHERE CONDITIONS DO NOT PERMIT THE USE OF THRUST BLOCKS, JOINT RESTRAINTS ARE TO BE USED.

11. THE SUNSHINE COAST REGIONAL DISTRICT WILL REMOVE AND RETURN TO THE SUNSHINE COAST REGIONAL DISTRICT SERVICE YARD ALL EXISTING FIRE HYDRANTS ASSEMBLIES, GATE VALVES, ETC. CO-INCIDENT WITH TIE-IN WATERMAIN STANDARDS. SEE SCRD DRAWING STANDARD N2.

12. ALL PRESSURE TESTING, DISCHARGE AND FLUSHING TO BE PERFORMED TO THE MINISTRY OF HEALTH AND ANWA STANDARDS. SEE SCRD DRAWING STANDARD N2.

13. RECORD DRAWINGS SHALL BE MAINTAINED BY THE CONTRACTOR THAT ACCURATELY DOCUMENT LOCATION AND DEPTH OF INSTALLED WORK FOR SUBMISSION TO THE SCRD.

WATER WORKS NOTES

DRAWING NUMBER:  
N1

SCRD

STANDARD DETAIL DRAWINGS

THE FOLLOWING IS COMPLEMENTARY TO THE SCRD BUREAU AND DOES NOT NULLIFY THEM IN PART OR WHOLE.

1. THE SUNSHINE COAST REGIONAL DISTRICT ENGINEER, OR DULY AUTHORIZED REPRESENTATIVE, HEREOFORTH REFERRED TO AS "SCRD ENGINEER", MAY BE CONSIDERED TO RECTIFY WATERMAINS PRODUCTS, COVER FORTY-EIGHT HOURS NOTICE, BETWEEN 9:00 AND 15:00, MONDAY TO FRIDAY, SUBJECT TO AVAILABILITY.

2. IN ACCORDANCE WITH BRAWN 300, SECTION 2, ARTICLE 1.5, THE OWNER'S REPRESENTATIVE SHALL ARRANGE TO MEET WITH THE SCRD ENGINEER PRIOR TO THE START OF CONSTRUCTION, AT THAT TIME THE SCRD ENGINEER WILL INFORM THE OWNER'S REPRESENTATIVE OF THE REQUIRED DEPTHS OF INSTALLATION.

3. QUALIFIED INSPECTOR FROM THE PRIVATE SECTOR (E.G. THIRD PARTY INDUSTRIAL MAY BE USED AS AN ALTERNATIVE TO THE SCRD ENGINEER FOR THE PURPOSES OF LEAKAGE TESTING AND DIRECTION PROCEDURES, PROVIDED THAT THE SCRD HAS APPROVED OF THE USE OF THEIR SERVICES, AND THAT A QUALIFIED PROFESSIONAL ENGINEER PROVIDES A SIGNED AND DATED LETTER, CONFIRMING THAT THE TESTER HAS BEEN COMPLETED TO MINCED, VCH, ANWA, AND SCRD STANDARDS.

4. THE SCRD ENGINEER, OR AUTHORIZED INSPECTOR, MUST BE PRESENT AND WITNESS THE LEAKAGE TESTING AS DESCRIBED IN BRAWN 300, SECTION 4, PAGE 8, ARTICLE 1.3.5. THE SCRD INSPECTOR, OR AUTHORIZED INSPECTOR, MUST BE PRESENT WHEN THE MAIN IS FULLY PRESSURIZED AND AGAIN FOLLOWING TWO HOURS OF CONSTANT PRESSURIZATION.

5. PRIOR TO DISSECTION OF THE WATERMAINS, THE SCRD MUST RECEIVE WRITTEN NOTIFICATION OF THE DISSECTION METHOD THAT WILL BE USED FOLLOWING THE LOCATION OF THE WATERMAINS. THE SCRD INSPECTOR, OR AUTHORIZED INSPECTOR, MUST BE PRESENT AND WITNESS THE DISSECTION AS DESCRIBED IN BRAWN 300, SECTION 4, PAGE 8, ARTICLE 1.3.5. THE SCRD INSPECTOR, OR AUTHORIZED INSPECTOR, MUST BE PRESENT WHEN THE MAIN IS FULLY COLORATED AND AGAIN FOLLOWING TWENTY FOUR HOURS OF DISSECTION.

6. THE COLLECTION OF SAMPLES FOR COULFORM BACTERIA TESTING WILL BE PERFORMED BY THE SUNSHINE COAST REGIONAL DISTRICT SENIOR WATER TECHNICIAN, OR DULY AUTHORIZED REPRESENTATIVE. THIRD PARTY PERSONNEL WILL NOT BE PERMITTED TO COLLECT SAMPLES FOR COULFORM BACTERIA TESTING. SAMPLES FOR COULFORM TESTING WILL NOT BE TAKEN UNTIL THE DISSECTION AND FLUSHING OF THE WATERMAINS HAS BEEN COMPLETED TO THE SATISFACTION OF THE SCRD ENGINEER.

7. THE SCRD UTILITIES CONTRACTOR WILL BE ASKED TO PROCEED WITH THE FINAL TIE-IN UPON THE COMPLETION OF THE ABOVE MENTIONED LEAKAGE TESTING, DISSECTION, AND COULFORM BACTERIA TESTING TO THE SATISFACTION OF THE SCRD ENGINEER.

INSPECTION NOTES

DRAWING NUMBER:  
N2

MOTI

POLICIES AND STANDARDS

1. ALL THE DESIGN AND CONSTRUCTION OF 3RD PARTY UTILITIES ON THE MINISTRY OF TRANSPORTATION AND INFRASTRUCTURE (HEREIN AFTER CALLED "MOTI") OWNED ROW/PROPERTY CORRIDOR, ARE TO BE CARRIED OUT AS PER THE LATEST PUBLISHED "UTILITY POLICY MANUAL", UNLESS AND OTHERWISE SUPERSEDED BY ANOTHER STANDARD OR POLICY SET OUT BY THE MOTI. MOTI POLICIES, STANDARDS AND SPECIFICATIONS SUPERSEDES, THE SAME SET OUT BY THE SCRD OR MMCD, ON CONSTRUCTIONS ON MOTI ROW CORRIDOR/PROPERTY.

2. ENGINEER ON RECORD/HEREIN AFTER CALLED "FOR" WILL BE THE 1ST POINT OF CONTACT BY THE MINISTRY FOR ANY MATTER RELATING TO THIS SPECIFIC PROJECT. FOR WILL BE RESPONSIBLE FOR FIELD REVIEWING HEREIN AFTER CALLED "FOR'S" AND COMMUNICATION AND GETTING THE APPROVAL FOR ANY OF THE DESIGN CHANGES PER AND APPROVAL OF THE DESIGN, BY THE MOTI DISTRICT OFFICE. APPOINTMENT OF "FOR" MUST BE DONE AS SET OUT ON MOTI'S UTILITY POLICY MANUAL 2019 V1.0 (HEREIN AFTER CALLED "UPM 2019").

3. FOR TO SEEK WRITTEN APPROVAL FOR THE DESIGN AND CONSTRUCTION PRIOR TO COMMENCEMENT OF ANY TYPE OF WORK AS SET OUT IN UPM 2019 8.2 TECHNICAL CIRCULAR 16-09/91 - ENGINEER OF RECORD & REVIEW GUIDELINES (HEREIN AFTER CALLED "T-06/09").

4. FOR TO SEEK SPECIAL WRITTEN APPROVAL FOR ANY CONDITIONS OR SITUATIONS THAT ARE DEEMED "EXCEPTIONS" IN UPM 2019 AND MOTI TO REVIEW AND ANALYZE EACH PROJECT AS SEPARATE SCENARIO AND CASE BY CASE.

5. TRENCHING ON MOTI ROW MUST BE CARRIED OUT AS PER THE POLICIES AND STANDARDS SET OUT ON UPM 2019 SECTION 25.3.1, IF AND WHEN TESTING AND BACKFILLING PROCEDURES ARE DIFFERENT FROM SCRD STANDARDS, SPECIFICATION AND SPECIFICATIONS, METHODS AND PROCEDURES STIPULATED IN UPM 2019 STANDARDS.

6. SCRD TO FOLLOW ALL THE GUIDELINES STIPULATED ON SECTION 15.3 OF UPM 2019 WHEN, NOT LIMITED TO, INVESTIGATING, DESIGNING, CONSTRUCTING, INSPECTING, TESTING AND CONCLUDING THE CONTRACT.

7. ALL THE ABOVE GROUND FURNITURE BELONGING TO THE SYSTEM ARE TO BE DESIGNED AND CONSTRUCTED AWAY FROM THE CLEAR ZONE AS SPECIFIED IN SECTION 19.4.3 OF MOTI UPM 2019. ANY SPECIAL CASES OR SCENARIOS PROHIBITING SUCH COMPLIANCE, MUST BE APPROVED BY THE MOTI DISTRICT REPRESENTATIVE FOR THE AREA.

8. VALVES, VALVE COVERS, MANHOLES, MANHOLE COVERS OR ANY OTHER SURFACE INFRASTRUCTURE THAT MAY BE LOCATED ON THE PAVED SURFACES ARE TO BE DESIGNED AND CONSTRUCTED AS PER MOTI, 2019, STANDARD SPECIFICATIONS FOR HIGHWAY CONSTRUCTION, REHABILITATION OF PAVED SURFACE ARE TO BE DONE AS PER THE SAME WITH FLUSHED FINISH LEVEL OF SURFACE INFRASTRUCTURE MATCHING THE FINAL TIE-UP OF PAVEMENT.

9. TRENCH EXCAVATION AND BACKFILLING TO BE CARRIED OUT AS PER MOTI, 2019, STANDARD SPECIFICATIONS FOR HIGHWAY CONSTRUCTION, SECTION 20.1 & 20.2 RESPECTIVELY, WITH COMPLIANCE TO UPM 2019, SECTION 25.3.

10. WHERE PIPELINES ARE ABANDONED IN PLACE, THEY SHALL BE ABANDONED AS PER MOTI UPM 2019, SECTION 19.4.3 AND SECTION 19.4.3.5. COVER VMS TO CSA 260 STANDARDS AND BE:

- EMPTIED OF SERVICE FLUIDS;
- PURGED OR APPROPRIATELY CLEANED OR BOTH IN A MANNER THAT LEAVES NO MOBILE MATERIALS REMAINING IN THE PIPELINE;
- PHYSICALLY SEPARATED FROM ANY IN-SERVICE PIPING OR FACILITIES;
- CAPPED, PLUGGED, OR OTHERWISE EFFECTIVELY SEALED;
- CUT OFF AT PIPELINE DEPTH; AND
- LEFT UNDISBURSED.

UPM 2019 V1.0

DRAWING NUMBER:  
MOT11

MOTI

STANDARD DETAIL DRAWING

TYPICAL COVER DEPTH AND VERTICAL ALIGNMENT REQUIREMENT

UPM 2019, SECTION 18.0, TABLE 18-1: DEPTH OF COVER FOR WATER AND SEWER LINES

PIPELINE PRESSURE	UNDER PAVEMENT AND SHOULDER	DEIGN DITCH BOTTOM	ELSEWHERE IN THE RIGHT OF WAY (ROW)
GREATER THAN 1,380 kPa (200 psi)	1.20m	1.00m	1.00m
LESS THAN OR EQUAL TO 1,380 kPa (200 psi)	1.20m	1.00m	0.75m

UPM 2019, SECTION 18.0, FIGURE 18-1: EXAMPLE WATER AND SEWER LINE CROSSING DIAGRAM

UPM 2019, SECTION 18.7, 18.7.2 LOCATION TEMPLATES 1, 2, AND 3 - FILL

MOTI TYPICAL REQUIREMENTS

DRAWING NUMBER:  
MOT12

MOTI

STANDARD DETAIL DRAWING

TYPICAL VERTICAL ALIGNMENT REQUIREMENT

UPM 2019, SECTION 18.7, 18.7.3 TEMPLATE 1, 2, AND 3 - CUT

UPM 2019, SECTION 18.8, 18.8.2 TEMPLATE 4 - UNDER DITCHES

UPM 2019, SECTION 18.8, 18.8.4 TEMPLATE 6 - UNDER SHOULDER

MOTI TYPICAL REQUIREMENTS

DRAWING NUMBER:  
MOT13

MOTI

STANDARD DETAIL DRAWINGS

ASPHALT CONCRETE PAVEMENT TYPE B TO COMPLY WITH MOTI 2019 24.4. MOTI UPM V1.0 (2019) 24.4. SEE DETAIL 4-0 FOR ADDITIONAL SPECIFICATIONS

SHOULDER TO BE REFINISHED TO AS GOOD OR BETTER THAN EXISTING DETAIL 4-0 FOR ADDITIONAL SPECIFICATIONS

WITH MOTI 2019 24.4.2, 24.4.2.2, 24.4.2.3, 24.4.2.4, 24.4.2.5, 24.4.2.6, 24.4.2.7, 24.4.2.8, 24.4.2.9, 24.4.2.10, 24.4.2.11, 24.4.2.12, 24.4.2.13, 24.4.2.14, 24.4.2.15, 24.4.2.16, 24.4.2.17, 24.4.2.18, 24.4.2.19, 24.4.2.20, 24.4.2.21, 24.4.2.22, 24.4.2.23, 24.4.2.24, 24.4.2.25, 24.4.2.26, 24.4.2.27, 24.4.2.28, 24.4.2.29, 24.4.2.30, 24.4.2.31, 24.4.2.32, 24.4.2.33, 24.4.2.34, 24.4.2.35, 24.4.2.36, 24.4.2.37, 24.4.2.38, 24.4.2.39, 24.4.2.40, 24.4.2.41, 24.4.2.42, 24.4.2.43, 24.4.2.44, 24.4.2.45, 24.4.2.46, 24.4.2.47, 24.4.2.48, 24.4.2.49, 24.4.2.50, 24.4.2.51, 24.4.2.52, 24.4.2.53, 24.4.2.54, 24.4.2.55, 24.4.2.56, 24.4.2.57, 24.4.2.58, 24.4.2.59, 24.4.2.60, 24.4.2.61, 24.4.2.62, 24.4.2.63, 24.4.2.64, 24.4.2.65, 24.4.2.66, 24.4.2.67, 24.4.2.68, 24.4.2.69, 24.4.2.70, 24.4.2.71, 24.4.2.72, 24.4.2.73, 24.4.2.74, 24.4.2.75, 24.4.2.76, 24.4.2.77, 24.4.2.78, 24.4.2.79, 24.4.2.80, 24.4.2.81, 24.4.2.82, 24.4.2.83, 24.4.2.84, 24.4.2.85, 24.4.2.86, 24.4.2.87, 24.4.2.88, 24.4.2.89, 24.4.2.90, 24.4.2.91, 24.4.2.92, 24.4.2.93, 24.4.2.94, 24.4.2.95, 24.4.2.96, 24.4.2.97, 24.4.2.98, 24.4.2.99, 24.4.2.100, 24.4.2.101, 24.4.2.102, 24.4.2.103, 24.4.2.104, 24.4.2.105, 24.4.2.106, 24.4.2.107, 24.4.2.108, 24.4.2.109, 24.4.2.110, 24.4.2.111, 24.4.2.112, 24.4.2.113, 24.4.2.114, 24.4.2.115, 24.4.2.116, 24.4.2.117, 24.4.2.118, 24.4.2.119, 24.4.2.120, 24.4.2.121, 24.4.2.122, 24.4.2.123, 24.4.2.124, 24.4.2.125, 24.4.2.126, 24.4.2.127, 24.4.2.128, 24.4.2.129, 24.4.2.130, 24.4.2.131, 24.4.2.132, 24.4.2.133, 24.4.2.134, 24.4.2.135, 24.4.2.136, 24.4.2.137, 24.4.2.138, 24.4.2.139, 24.4.2.140, 24.4.2.141, 24.4.2.142, 24.4.2.143, 24.4.2.144, 24.4.2.145, 24.4.2.146, 24.4.2.147, 24.4.2.148, 24.4.2.149, 24.4.2.150, 24.4.2.151, 24.4.2.152, 24.4.2.153, 24.4.2.154, 24.4.2.155, 24.4.2.156, 24.4.2.157, 24.4.2.158, 24.4.2.159, 24.4.2.160, 24.4.2.161, 24.4.2.162, 24.4.2.163, 24.4.2.164, 24.4.2.165, 24.4.2.166, 24.4.2.167, 24.4.2.168, 24.4.2.169, 24.4.2.170, 24.4.2.171, 24.4.2.172, 24.4.2.173, 24.4.2.174, 24.4.2.175, 24.4.2.176, 24.4.2.177, 24.4.2.178, 24.4.2.179, 24.4.2.180, 24.4.2.181, 24.4.2.182, 24.4.2.183, 24.4.2.184, 24.4.2.185, 24.4.2.186, 24.4.2.187, 24.4.2.188, 24.4.2.189, 24.4.2.190, 24.4.2.191, 24.4.2.192, 24.4.2.193, 24.4.2.194, 24.4.2.195, 24.4.2.196, 24.4.2.197, 24.4.2.198, 24.4.2.199, 24.4.2.200, 24.4.2.201, 24.4.2.202, 24.4.2.203, 24.4.2.204, 24.4.2.205, 24.4.2.206, 24.4.2.207, 24.4.2.208, 24.4.2.209, 24.4.2.210, 24.4.2.211, 24.4.2.212, 24.4.2.213, 24.4.2.214, 24.4.2.215, 24.4.2.216, 24.4.2.217, 24.4.2.218, 24.4.2.219, 24.4.2.220, 24.4.2.221, 24.4.2.222, 24.4.2.223, 24.4.2.224, 24.4.2.225, 24.4.2.226, 24.4.2.227, 24.4.2.228, 24.4.2.229, 24.4.2.230, 24.4.2.231, 24.4.2.232, 24.4.2.233, 24.4.2.234, 24.4.2.235, 24.4.2.236, 24.4.2.237, 24.4.2.238, 24.4.2.239, 24.4.2.240, 24.4.2.241, 24.4.2.242, 24.4.2.243, 24.4.2.244, 24.4.2.245, 24.4.2.246, 24.4.2.247, 24.4.2.248, 24.4.2.249, 24.4.2.250, 24.4.2.251, 24.4.2.252, 24.4.2.253, 24.4.2.254, 24.4.2.255, 24.4.2.256, 24.4.2.257, 24.4.2.258, 24.4.2.259, 24.4.2.260, 24.4.2.261, 24.4.2.262, 24.4.2.263, 24.4.2.264, 24.4.2.265, 24.4.2.266, 24.4.2.267, 24.4.2.268, 24.4.2.269, 24.4.2.270, 24.4.2.271, 24.4.2.272, 24.4.2.273, 24.4.2.274, 24.4.2.275, 24.4.2.276, 24.4.2.277, 24.4.2.278, 24.4.2.279, 24.4.2.280, 24.4.2.281, 24.4.2.282, 24.4.2.283, 24.4.2.284, 24.4.2.285, 24.4.2.286, 24.4.2.287, 24.4.2.288, 24.4.2.289, 24.4.2.290, 24.4.2.291, 24.4.2.292, 24.4.2.293, 24.4.2.294, 24.4.2.295, 24.4.2.296, 24.4.2.297, 24.4.2.298, 24.4.2.299, 24.4.2.300, 24.4.2.301, 24.4.2.302, 24.4.2.303, 24.4.2.304, 24.4.2.305, 24.4.2.306, 24.4.2.307, 24.4.2.308, 24.4.2.309, 24.4.2.310, 24.4.2.311, 24.4.2.312, 24.4.2.313, 24.4.2.314, 24.4.2.315, 24.4.2.316, 24.4.2.317, 24.4.2.318, 24.4.2.319, 24.4.2.320, 24.4.2.321, 24.4.2.322, 24.4.2.323, 24.4.2.324, 24.4.2.325, 24.4.2.326, 24.4.2.327, 24.4.2.328, 24.4.2.329, 24.4.2.330, 24.4.2.331, 24.4.2.332, 24.4.2.333, 24.4.2.334, 24.4.2.335, 24.4.2.336, 24.4.2.337, 24.4.2.338, 24.4.2.339, 24.4.2.340, 24.4.2.341, 24.4.2.342, 24.4.2.343, 24.4.2.344, 24.4.2.345, 24.4.2.346, 24.4.2.347, 24.4.2.348, 24.4.2.349, 24.4.2.350, 24.4.2.351, 24.4.2.352, 24.4.2.353, 24.4.2.354, 24.4.2.355, 24.4.2.356, 24.4.2.357, 24.4.2.358, 24.4.2.359, 24.4.2.360, 24.4.2.361, 24.4.2.362, 24.4.2.363, 24.4.2.364, 24.4.2.365, 24.4.2.366, 24.4.2.367, 24.4.2.368, 24.4.2.369, 24.4.2.370, 24.4.2.371, 24.4.2.372, 24.4.2.373, 24.4.2.374, 24.4.2.375, 24.4.2.376, 24.4.2.377, 24.4.2.378, 24.4.2.379, 24.4.2.380, 24.4.2.381, 24.4.2.382, 24.4.2.383, 24.4.2.384, 24.4.2.385, 24.4.2.386, 24.4.2.387, 24.4.2.388, 24.4.2.389, 24.4.2.390, 24.4.2.391, 24.4.2.392, 24.4.2.393, 24.4.2.394, 24.4.2.395, 24.4.2.396, 24.4.2.397, 24.4.2.398, 24.4.2.399, 24.4.2.400, 24.4.2.401, 24.4.2.402, 24.4.2.403, 24.4.2.404, 24.4.2.405, 24.4.2.406, 24.4.2.407, 24.4.2.408, 24.4.2.409, 24.4.2.410, 24.4.2.411, 24.4.2.412, 24.4.2.413, 24.4.2.414, 24.4.2.415, 24.4.2.416, 24.4.2.417, 24.4.2.418, 24.4.2.419, 24.4.2.420, 24.4.2.421, 24.4.2.422, 24.4.2.423, 24.4.2.424, 24.4.2.425, 24.4.2.426, 24.4.2.427, 24.4.2.428, 24.4.2.429, 24.4.2.430, 24.4.2.431, 24.4.2.432, 24.4.2.433, 24.4.2.434, 24.4.2.435, 24.4.2.436, 24.4.2.437, 24.4.2.438, 24.4.2.439, 24.4.2.440, 24.4.2.441, 24.4.2.442, 24.4.2.443, 24.4.2.444, 24.4.2.445, 24.4.2.446, 24.4.2.447, 24.4.2.448, 24.4.2.449, 24.4.2.450, 24.4.2.451, 24.4.2.452, 24.4.2.453, 24.4.2.454, 24.4.2.455, 24.4.2.456, 24.4.2.457, 24.4.2.458, 24.4.2.459, 24.4.2.460, 24.4.2.461, 24.4.2.462, 24.4.2.463, 24.4.2.464, 24.4.2.465, 24.4.2.466, 24.4.2.467, 24.4.2.468, 24.4.2.469, 24.4.2.470, 24.4.2.471, 24.4.2.472, 24.4.2.473, 24.4.2.474, 24.4.2.475, 24.4.2.476, 24.4.2.477, 24.4.2.478, 24.4.2.479, 24.4.2.480, 24.4.2.481, 24.4.2.482, 24.4.2.483, 24.4.2.484, 24.4.2.485, 24.4.2.486, 24.4.2.487, 24.4.2.488, 24.4.2.489, 24.4.2.490, 24.4.2.491, 24.4.2.492, 24.4.2.493, 24.4.2.494, 24.4.2.495, 24.4.2.496, 24.4.2.497, 24.4.2.498, 24.4.2.499, 24.4.2.500, 24.4.2.501, 24.4.2.502, 24.4.2.503, 24.4.2.504, 24.4.2.505, 24.4.2.506, 24.4.2.507, 24.4.2.508, 24.4.2.509, 24.4.2.510, 24.4.2.511, 24.4.2.512, 24.4.2.513, 24.4.2.514, 24.4.2.515, 24.4.2.516, 24.4.2.517, 24.4.2.518, 24.4.2.519, 24.4.2.520, 24.4.2.521, 24.4.2.522, 24.4.2.523, 24.4.2.524, 24.4.2.525, 24.4.2.526, 24.4.2.527, 24.4.2.528, 24.4.2.529, 24.4.2.530, 24.4.2.531, 24.4.2.532, 24.4.2.533, 24.4.2.534, 24.4.2.535, 24.4.2.536, 24.4.2.537, 24.4.2.538, 24.4.2.539, 24.4.2.540, 24.4.2.541, 24.4.2.542, 24.4.2.543, 24.4.2.544, 24.4.2.545, 24.4.2.546, 24.4.2.547, 24.4.2.548, 24.4.2.549, 24.4.2.550, 24.4.2.551, 24.4.2.552, 24.4.2.553, 24.4.2.554, 24.4.2.555, 24.4.2.556, 24.4.2.557, 24.4.2.558, 24.4.2.559, 24.4.2.560, 24.4.2.561, 24.4.2.562, 24.4.2.563, 24.4.2.564, 24.4.2.565, 24.4.2.566, 24.4.2.567, 24.4.2.568, 24.4.2.569, 24.4.2.570, 24.4.2.571, 24.4.2.572, 24.4.2.573, 24.4.2.574, 24.4.2.575, 24.4.2.576, 24.4.2.577, 24.4.2.578, 24.4.2.579, 24.4.2.580, 24.4.2.581, 24.4.2.582, 24.4.2.583, 24.4.2.584, 24.4.2.585, 24.4.2.586, 24.4.2.587, 24.4.2.588, 24.4.2.589, 24.4.2.590, 24.4.2.591, 24.4.2.592, 24.4.2.593, 24.4.2.594, 24.4.2.595, 24.4.2.596, 24.4.2.597, 24.4.2.598, 24.4.2.599, 24.4.2.600, 24.4.2.601, 24.4.2.602, 24.4.2.603, 24.4.2.604, 24.4.2.605, 24.4.2.606, 24.4.2.607, 24.4.2.608, 24.4.2.609, 24.4.2.610, 24.4.2.611, 24.4.2.612, 24.4.2.613, 24.4.2.614, 24.4.2.615, 24.4.2.616, 24.4.2.617, 24.4.2.618, 24.4.2.619, 24.4.2.620, 24.4.2.621, 24.4.2.622, 24.4.2.623, 24.4.2.624, 24.4.2.625, 24.4.2.626, 24.4.2.627, 24.4.2.628, 24.4.2.629, 24.4.2.630, 24.4.2.631, 24.4.2.632, 24.4.2.633, 24.4.2.634, 24.4.2.635, 24.4.2.636, 24.4.2.637, 24.4.2.638, 24.4.2.639, 24.4.2.640, 24.4.2.641, 24.4.2.642, 24.4.2.643, 24.4.2.644, 24.4.2.645, 24.4.2.646, 24.4.2.647, 24.4.2.648, 24.4.2.649, 24.4.2.650, 24.4.2.651, 24.4.2.652, 24.4.2.653, 24.4.2.654, 24.4.2.655, 24.4.2.656, 24.4.2.657, 24.4.2.658, 24.4.2.659, 24.4.2.660, 24.4.2.661, 24.4.2.662, 24.4.2.663, 24.4.2.664, 24.4.2.665, 24.4.2.666, 24.4.2.667, 24.4.2.668, 24.4.2.669, 24.4.2.670, 24.4.2.671, 24.4.2.672, 24.4.2.673, 24.4.2.674, 24.4.2.675, 24.4.2.676, 24.4.2.677, 24.4.2.678, 24.4.2.679, 24.4.2.680, 24.4.2.681, 24.4.2.682, 24.4.2.683, 24.4.2.684, 24.4.2.685, 24.4.2.686, 24.4.2.687, 24.4.2.688, 24.4.2.689, 24.4.2.690, 24.4.2.691, 24.4.2.692, 24.4.2.693, 24.4.2.694, 24.4.2.695, 24.4.2.696, 24.4.2.697, 24.4.2.698, 24.4.2.699, 24.4.2.700, 24.4.2.701, 24.4.2.702, 24.4.2.703, 24.4.2.704, 24.4.2.705, 24.4.2.706, 24.4.2.707, 24.4.2.708, 24.4.2.709, 24.4.2.710, 24.4.2.711, 24.4.2.712, 24.4.2.713, 24.4.2.714, 24.4.2.715, 24.4.2.716, 24.4.2.717, 24.4.2.7