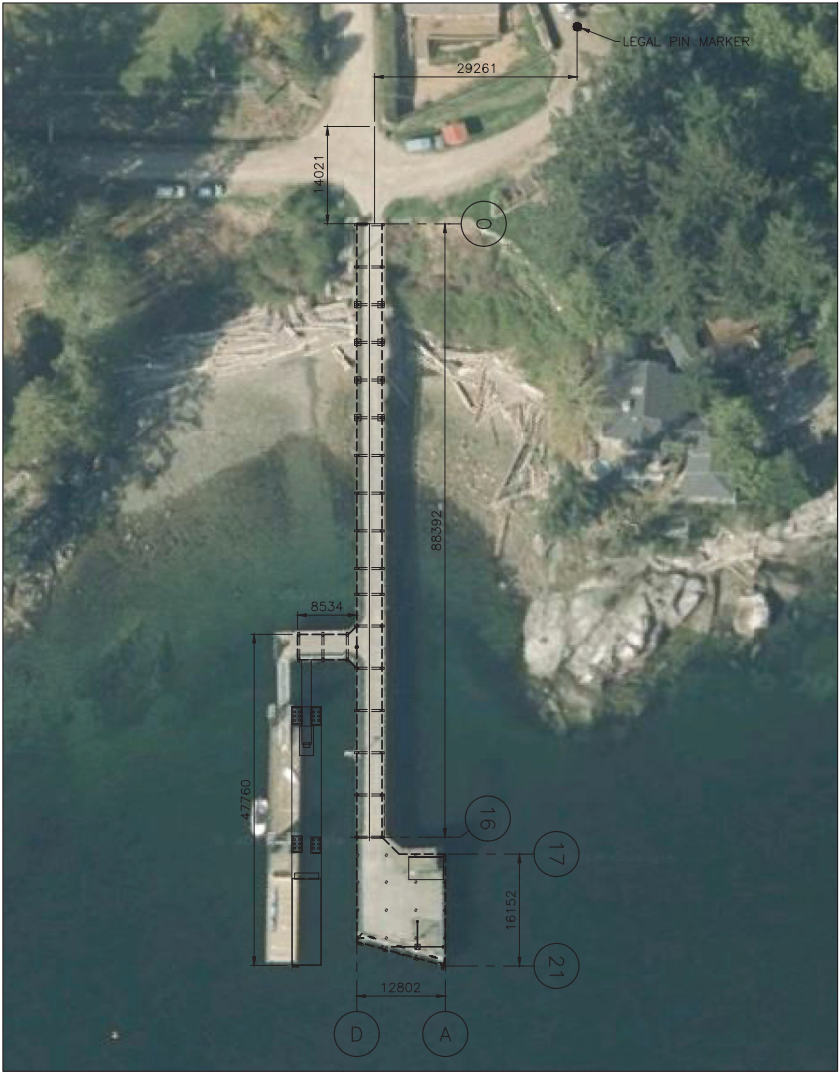


1. READ STRUCTURAL DRAWINGS IN CONJUNCTION WITH ALL OTHER CONTRACT DRAWINGS AND DOCUMENTS.
REPORT ANY CONFLICTS TO THE ENGINEER BEFORE COMMENCING WORK
2. VERIFY ALL DIMENSIONS AND ELEVATIONS PRIOR TO CONSTRUCTION.
3. NOTIFY THE ENGINEER 48 HOURS IN ADVANCE FOR INSPECTION OF STRUCTURAL CONNECTIONS BEFORE COVERING UP.
4. CONTRACTOR'S RESPONSIBILITY: THESE DRAWINGS SHOW COMPLETED STRUCTURAL COMPONENTS OF THE DOCKS. THE REQUIRED TEMPORARY BRACING AND SHORING TO PERFORM THE WORK SAFELY IS THE RESPONSIBILITY OF THE CONTRACTOR.
5. ENVIRONMENTAL WORK PROCEDURES, TIMING AND SPECIAL PRECAUTIONS SHALL BE IN ACCORDANCE WITH THE REQUIREMENTS AND LIMITATIONS OF THE FEDERAL DEPARTMENT OF FISHERIES AND OCEANS, AND THE PROVINCIAL MINISTRY OF WATER, LAND AND AIR PROTECTION.
6. DIMENSIONS ARE IN MILLIMETRES AND ELEVATIONS ARE IN METRES, UNLESS OTHERWISE NOTED.
7. HORIZONTAL DATUM U.T.M NAD 83.
8. VERTICAL DATUM (ELEVATIONS AND CONTOURS) TO CHART DATUM (C.D.).
9. TIDE ELEVATIONS AT THE SITE ARE BASED ON VALUES PUBLISHED BY THE CANADIAN HYDROGRAPHIC SERVICE (CHS) FOR THE SITE AS FOLLOWS:

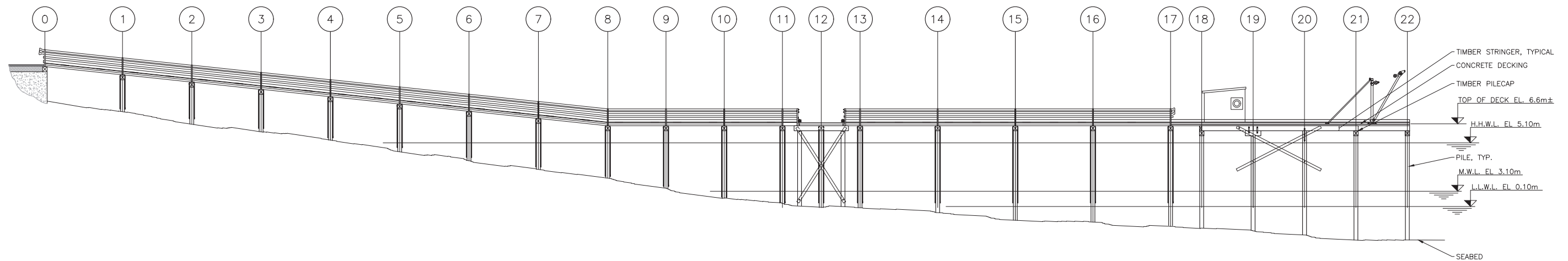
HIGHER HIGH WATER, LARGE TIDE (H.H.W.L.T.)	5.1 METRES
HIGHER HIGH WATER, MEAN TIDE (H.H.W.M.T.)	4.6 METRES
MEAN WATER LEVEL (M.W.L.)	3.2 METRES
LOWER LOW WATER, MEAN TIDE (L.L.W.M.T.)	1.3 METRES
LOWER LOW WATER, LARGE TIDE (L.L.W.L.T.)	0.1 METRES
10. SUBMIT SHOP DRAWINGS FOR REVIEW PRIOR FABRICATION.

CL.	—	CLEAR
C	—	CENTRELINE
CP.	—	COMPLETE PENETRATION
C/W	—	COMPLETE WITH
DWG.	—	DRAWING
EL.	—	ELEVATION
I.D.	—	INSIDE DIAMETER
LLH	—	LONG LEG HORIZONTAL
LLV	—	LONG LEG VERTICAL
MAX.	—	MAXIMUM
MIN.	—	MINIMUM
N.T.S.	—	NOT TO SCALE
OPP.	—	OPPOSITE
PL	—	PLATE
R	—	RADIUS
SIM.	—	SIMILAR
S.S.	—	STAINLESS STEEL
T.O.	—	TOP OF
TYP.	—	TYPICAL
U/S	—	UNDERSIDE
U.N.O.	—	UNLESS NOTED OTHERWISE
WP	—	WORK POINT



NOT FOR
CONSTRUCTION

ISSUES								SUB CONSULTANT		ENGINEERS SEAL		GAMBIER HARBOUR: GENERAL NOTES AND KEY PLAN		PORTS CONDITION ASSESSMENT GAMBIER HARBOUR, GAMBIER ISLAND		HEL PROJECT No. 4551-012		CLIENT DWG. No. N/A	
No.	DATE	ISSUED FOR	No.	DATE	ISSUED FOR	No.	DATE	ISSUED FOR	<div><p>3701 Shenton Rd, Nanaimo, BC V9T 2H1 Tel: 250-751-8558 Fax: 250-751-8559 Email: mail@heroldengineering.com</p></div>		1975 FIELD ROAD SECHELT BC V0N 3A1 SUNSHINE COAST REGIONAL DISTRICT		SCALE AS SHOWN		PERMIT No. N/A				
A	2023.03.24	CLIENT REVIEW					HEL DRAWING No. S01						REVISION A						
Copyright reserved. This drawing remains the exclusive property of Herold Engineering Limited and may not be reused or reproduced without written consent of Herold Engineering Limited.																			
								DRAFTED PHU											
								DRAFTING REVIEW											
								DESIGNED SPS											
								DESIGN REVIEW											





 SECTION
1:150

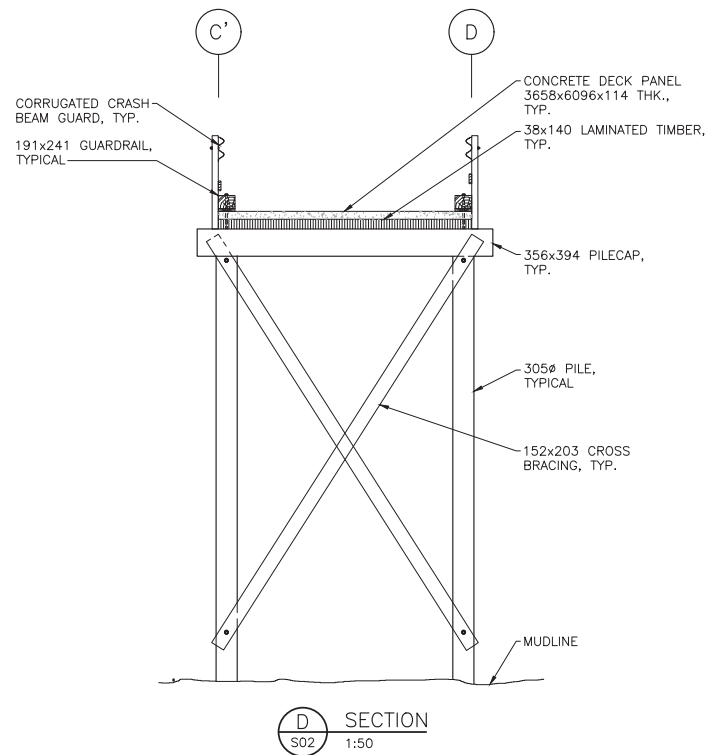
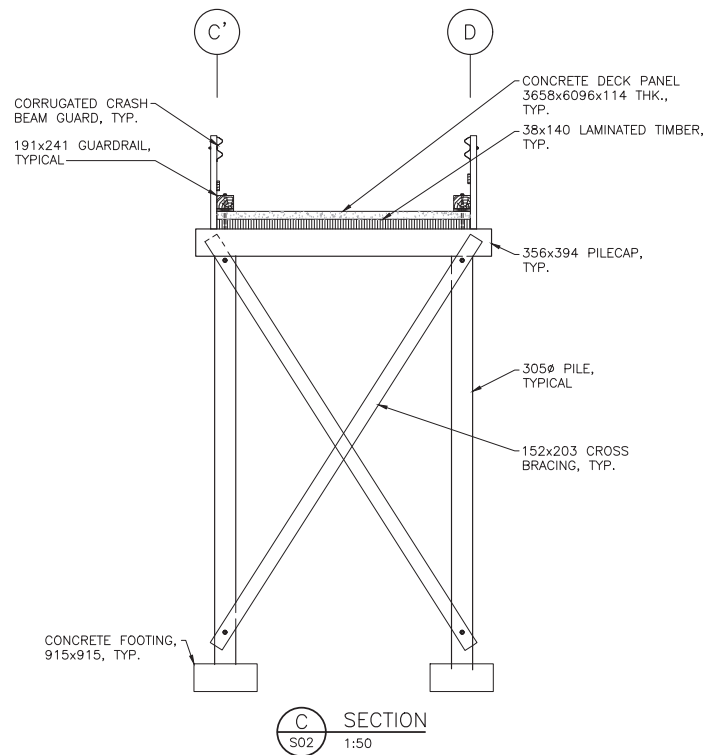
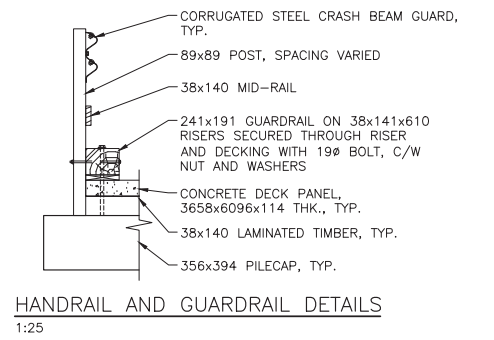
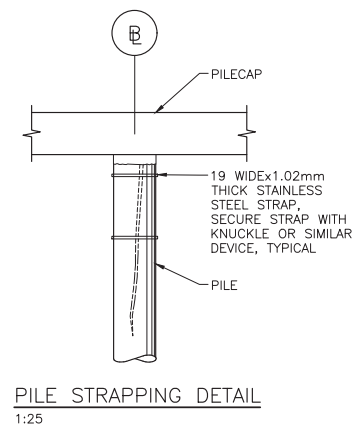
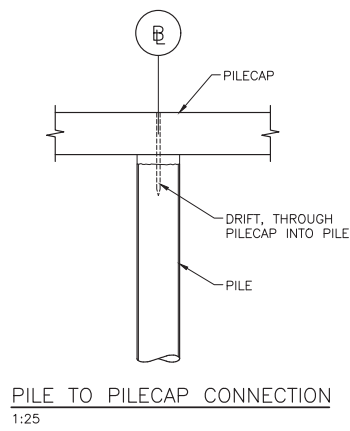
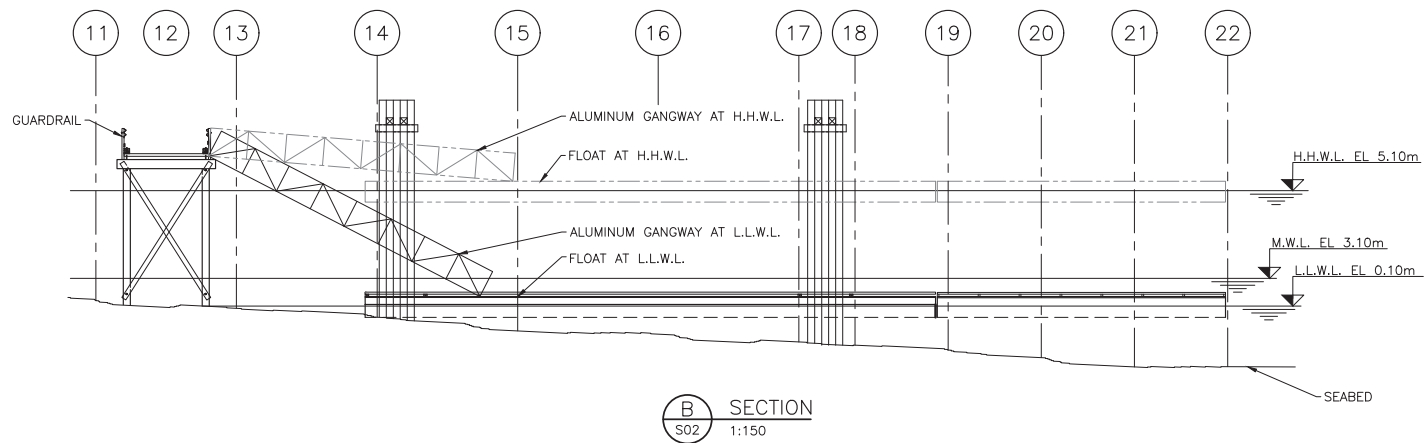
ISSUED FOR REPORT

NOT FOR
CONSTRUCTION

NOTES:

1. FOR GENERAL NOTES, SEE DWG. S01.
2. ALL ITEMS ARE TIMBER, UNLESS NOTED OTHERWISE.
3. ALL DIMENSIONS ARE APPROXIMATE AND ARE TO BE VERIFIED PRIOR TO REMEDIATION/CONSTRUCTION ACTIVITIES

<div>ISSUES</div> <table><tr><th>No.</th><th>DATE ISSUED</th><th>ISSUED FOR</th><th>No.</th><th>DATE ISSUED</th><th>ISSUED FOR</th></tr><tr><td>A</td><td>2023.03.24</td><td>CLIENT REVIEW</td><td></td><td></td><td></td></tr></table>						No.	DATE ISSUED	ISSUED FOR	No.	DATE ISSUED	ISSUED FOR	A	2023.03.24	CLIENT REVIEW				<div>SUB CONSULTANT</div>		<div>ENGINEERS SEAL</div>		<div>GAMBIER HARBOUR: GENERAL ARRANGEMENT - SHEET 1</div>		<div>PORTS CONDITION ASSESSMENT GAMBIER HARBOUR, GAMBIER ISLAND</div> <div>1975 FIELD ROAD SECHELT BC V0N 3A1 SUNSHINE COAST REGIONAL DISTRICT</div>		<div></div> <table><tr><td>HEL PROJECT No. 4551-012</td><td>CLIENT DWG. No. N/A</td></tr><tr><td>SCALE AS SHOWN</td><td>PERMIT No. N/A</td></tr><tr><td>HEL DRAWING No. S02</td><td>REVISION A</td></tr></table>		HEL PROJECT No. 4551-012	CLIENT DWG. No. N/A	SCALE AS SHOWN	PERMIT No. N/A	HEL DRAWING No. S02	REVISION A
No.	DATE ISSUED	ISSUED FOR	No.	DATE ISSUED	ISSUED FOR																												
A	2023.03.24	CLIENT REVIEW																															
HEL PROJECT No. 4551-012	CLIENT DWG. No. N/A																																
SCALE AS SHOWN	PERMIT No. N/A																																
HEL DRAWING No. S02	REVISION A																																
<div>© Copyright reserved. This drawing remains the exclusive property of Herold Engineering Limited and may not be reused or reproduced without written consent of Herold Engineering Limited.</div>								<div>HEROLD ENGINEERING</div> <div>3701 Shenton Rd, Nanaimo, BC V9T 2H1 Tel: 250-751-8558 Fax: 250-751-8559 Email: mail@heroldengineering.com</div>																									



ISSUED FOR REPORT

NOT FOR
CONSTRUCTION

NOTES:

- FOR GENERAL NOTES, SEE DWG. S01.
- ALL ITEMS ARE TIMBER, UNLESS NOTED OTHERWISE.
- ALL DIMENSIONS ARE APPROXIMATE AND ARE TO BE VERIFIED PRIOR TO REMEDIATION/CONSTRUCTION ACTIVITIES

ISSUES					
No.	DATE	ISSUED FOR	No.	DATE	ISSUED FOR
A	2023.03.24	CLIENT REVIEW			

SUB CONSULTANT

DRAFTED
PHU
DRAFTING REVIEW
DESIGNED
SPS
DESIGN REVIEW

HEROLD ENGINEERING

3701 Shenton Rd., Nanaimo, BC V9T 2H1
Tel: 250-751-8558 Fax: 250-751-8559
Email: mail@heroldengineering.com

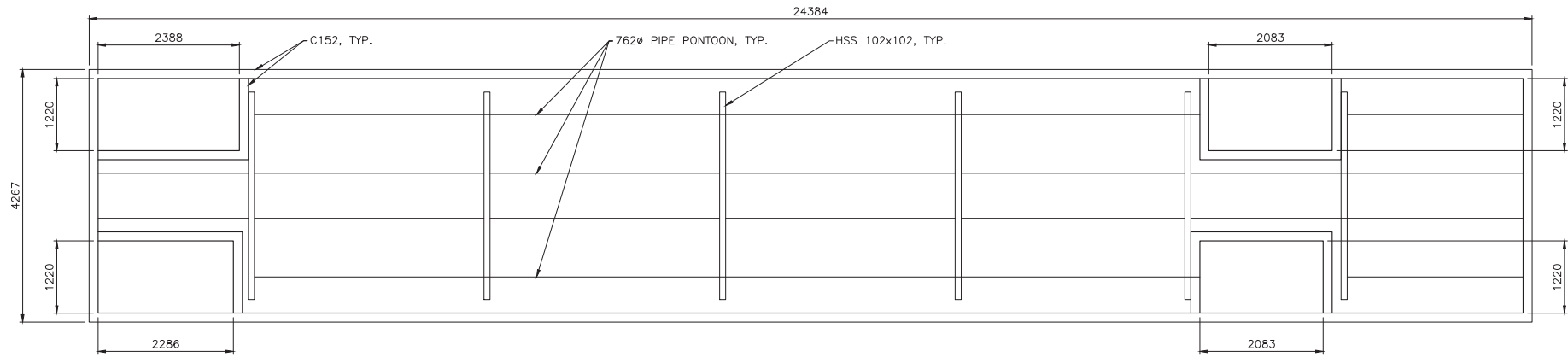
ENGINEERS SEAL

GAMBIER HARBOUR:
GENERAL
ARRANGEMENT -
SHEET 2

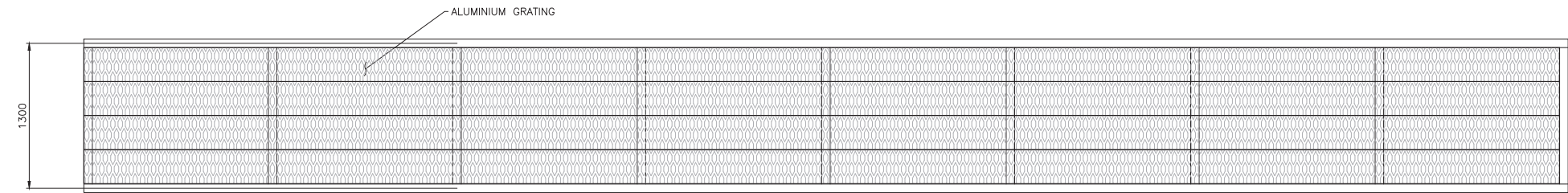
PORTS CONDITION ASSESSMENT
GAMBIER HARBOUR, GAMBIER ISLAND
1975 FIELD ROAD SECHelt BC V0N 3A1
SUNSHINE COAST REGIONAL DISTRICT



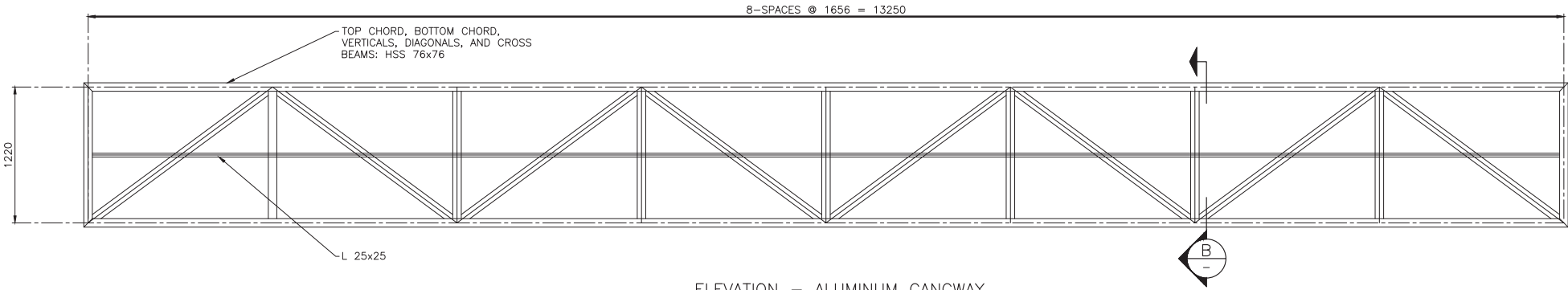
HEL PROJECT No. 4551-012	CLIENT DWG. No. N/A
SCALE AS SHOWN	PERMIT No. N/A
HEL DRAWING No. S03	REVISION A



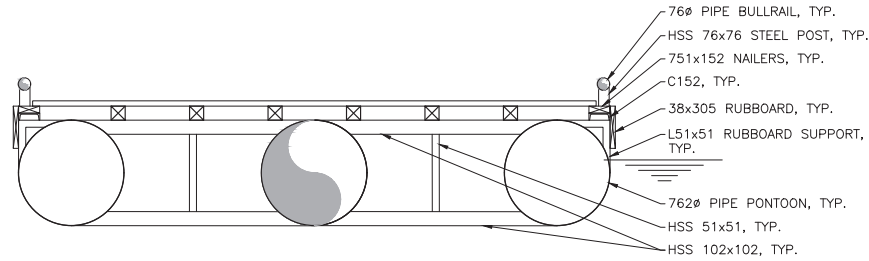
PLAN – FLOAT
1:50



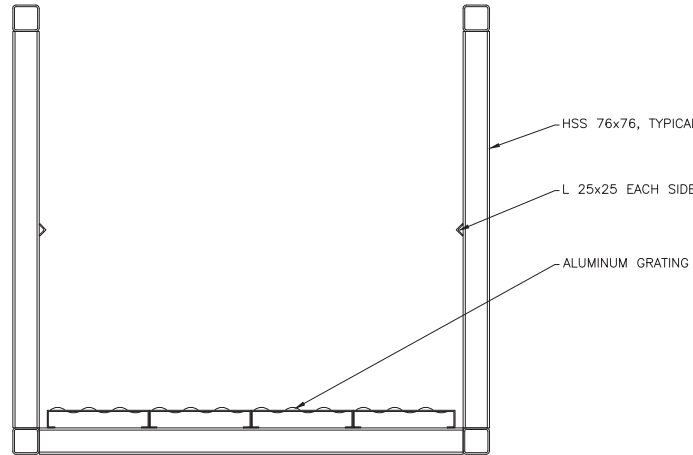
PLAN – ALUMINUM GANGWAY
1:25



ELEVATION – ALUMINUM GANGWAY
1:25



TYPICAL SECTION THROUGH FLOAT
1:25



B SECTION
1:10

ISSUED FOR REPORT

NOT FOR
CONSTRUCTION

NOTES:

- FOR GENERAL NOTES, SEE DWG. S01.
- ALL ITEMS ARE TIMBER, UNLESS NOTED OTHERWISE.
- ALL DIMENSIONS ARE APPROXIMATE AND ARE TO BE VERIFIED PRIOR TO REMEDIATION/CONSTRUCTION ACTIVITIES

ISSUES						SUB CONSULTANT
No.	DATE	ISSUED FOR	No.	DATE	ISSUED FOR	
A	2023.03.24	CLIENT REVIEW				

© Copyright reserved. This drawing remains the exclusive property of Herold Engineering Limited and may not be reused or reproduced without written consent of Herold Engineering Limited.

DRAFTED
PHU
DRAFTING REVIEW
DESIGNED
SPS
DESIGN REVIEW



3701 Shenton Rd., Nanaimo, BC V9T 2H1
Tel: 250-751-8558 Fax: 250-751-8559
Email: mail@heroldengineering.com

ENGINEERS SEAL

GAMBIER HARBOUR:
GANGWAY AND
FLOAT - PLANS AND
SECTIONS

PORTS CONDITION ASSESSMENT
GAMBIER HARBOUR, GAMBIER ISLAND
1975 FIELD ROAD SECHelt BC V0N 3A1
SUNSHINE COAST REGIONAL DISTRICT



HEL PROJECT No. 4551-012	CLIENT DWG. No. N/A
SCALE AS SHOWN	PERMIT No. N/A
HEL DRAWING No. S04	REVISION A

DESTROY ALL DRAWINGS SHOWING PREVIOUS REVISION