

ARCHITECTURAL 0 24" = 1' 0"

File: \\N:\projects\4551-012_Sunshine Coast Region_Engineering\012_Sunshine\Drawings\Notes\West Bay\012_Key Plan.dwg Plot Date: 03/23/2023 09:24 AM User: Peter Usher

GENERAL:

1. READ STRUCTURAL DRAWINGS IN CONJUNCTION WITH ALL OTHER CONTRACT DRAWINGS AND DOCUMENTS. REPORT ANY CONFLICTS TO THE ENGINEER BEFORE COMMENCING WORK
2. VERIFY ALL DIMENSIONS AND ELEVATIONS PRIOR TO CONSTRUCTION.
3. NOTIFY THE ENGINEER 48 HOURS IN ADVANCE FOR INSPECTION OF STRUCTURAL CONNECTIONS BEFORE COVERING UP.
4. CONTRACTOR'S RESPONSIBILITY: THESE DRAWINGS SHOW COMPLETED STRUCTURAL COMPONENTS OF THE DOCKS. THE REQUIRED TEMPORARY BRACING AND SHORING TO PERFORM THE WORK SAFELY IS THE RESPONSIBILITY OF THE CONTRACTOR.
5. ENVIRONMENTAL WORK PROCEDURES, TIMING AND SPECIAL PRECAUTIONS SHALL BE IN ACCORDANCE WITH THE REQUIREMENTS AND LIMITATIONS OF THE FEDERAL DEPARTMENT OF FISHERIES AND OCEANS, AND THE PROVINCIAL MINISTRY OF WATER, LAND AND AIR PROTECTION.
6. DIMENSIONS ARE IN MILLIMETRES AND ELEVATIONS ARE IN METRES, UNLESS OTHERWISE NOTED.
7. HORIZONTAL DATUM U.T.M NAD 83.
8. VERTICAL DATUM (ELEVATIONS AND CONTOURS) TO CHART DATUM (C.D.).
9. TIDE ELEVATIONS AT THE SITE ARE BASED ON VALUES PUBLISHED BY THE CANADIAN HYDROGRAPHIC SERVICE (CHS) FOR THE SITE AS FOLLOWS:

HIGHER HIGH WATER, LARGE TIDE (H.H.W.L.T.)	5.1 METRES
HIGHER HIGH WATER, MEAN TIDE (H.H.W.M.T.)	4.6 METRES
MEAN WATER LEVEL (M.W.L.)	3.2 METRES
LOWER LOW WATER, MEAN TIDE (L.L.W.M.T.)	1.3 METRES
LOWER LOW WATER, LARGE TIDE (L.L.W.L.T.)	0.1 METRES
- 10.SUBMIT SHOP DRAWINGS FOR REVIEW PRIOR FABRICATION.

ABBREVIATIONS:

- | | | |
|--------|---|------------------------|
| CL. | - | CLEAR |
| C | - | CENTRELINE |
| CP. | - | COMPLETE PENETRATION |
| C/W | - | COMPLETE WITH |
| DWG. | - | DRAWING |
| EL. | - | ELEVATION |
| I.D. | - | INSIDE DIAMETER |
| LLH | - | LONG LEG HORIZONTAL |
| LLV | - | LONG LEG VERTICAL |
| MAX. | - | MAXIMUM |
| MIN. | - | MINIMUM |
| N.T.S. | - | NOT TO SCALE |
| OPP. | - | OPPOSITE |
| PL | - | PLATE |
| R | - | RADIUS |
| SIM. | - | SIMILAR |
| S.S. | - | STAINLESS STEEL |
| T.O. | - | TOP OF |
| TYP. | - | TYPICAL |
| U/S | - | UNDERSIDE |
| U.N.O. | - | UNLESS NOTED OTHERWISE |
| WP | - | WORK POINT |



KEY PLAN
1:1000

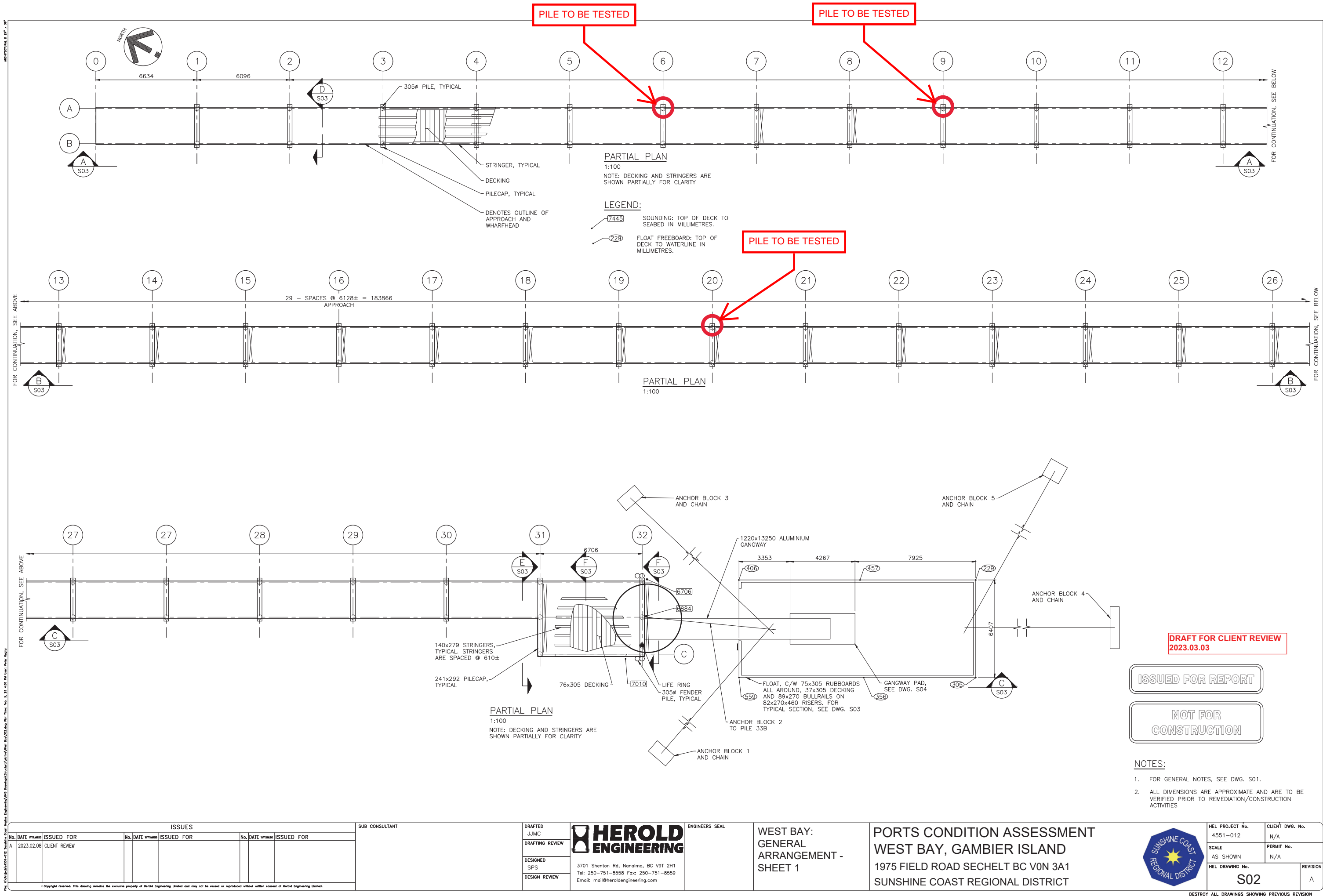
DRAFT FOR CLIENT REVIEW
2023.03.03

ISSUED FOR REPORT

NOT FOR
CONSTRUCTION

ISSUES						SUB CONSULTANT	<div><div></div><div>HEROLD ENGINEERING</div></div>	ENGINEERS SEAL	WEST BAY: GENERAL NOTES AND KEY PLAN	PORTS CONDITION ASSESSMENT WEST BAY, GAMBIER ISLAND 1975 FIELD ROAD SECHELT BC V0N 3A1 SUNSHINE COAST REGIONAL DISTRICT	<div><div>SUNSHINE COAST REGIONAL DISTRICT</div></div>	HEL PROJECT No.	CLIENT DWG. No.							
No.	DATE	ISSUED FOR	No.	DATE	ISSUED FOR							4551-012	N/A							
A	2023.02.08	CLIENT REVIEW										SCALE	PERMIT No.							
												AS SHOWN	N/A							
DESIGNED SPS							DESIGN REVIEW	3701 Shenton Rd, Nanaimo, BC V9T 2H1 Tel: 250-751-8558 Fax: 250-751-8559 Email: mail@heroldengineering.com				HEL DRAWING No.	REVISION							
													S01	A						
© Copyright reserved. This drawing remains the exclusive property of Herold Engineering Limited and may not be reused or reproduced without written consent of Herold Engineering Limited.																				

DESTROY ALL DRAWINGS SHOWING PREVIOUS REVISION



ISSUES					
No.	DATE	ISSUED FOR	No.	DATE	ISSUED FOR
A	2023.02.08	CLIENT REVIEW			

SUB CONSULTANT

DRAFTED
JJMC

DRAFTING REVIEW

DESIGNED
SPS

DESIGN REVIEW


HEROLD ENGINEERING

3701 Shenton Rd., Nanaimo, BC V9T 2H1
Tel: 250-751-8558 Fax: 250-751-8559
Email: mail@heroldengineering.com

ENGINEERS SEAL

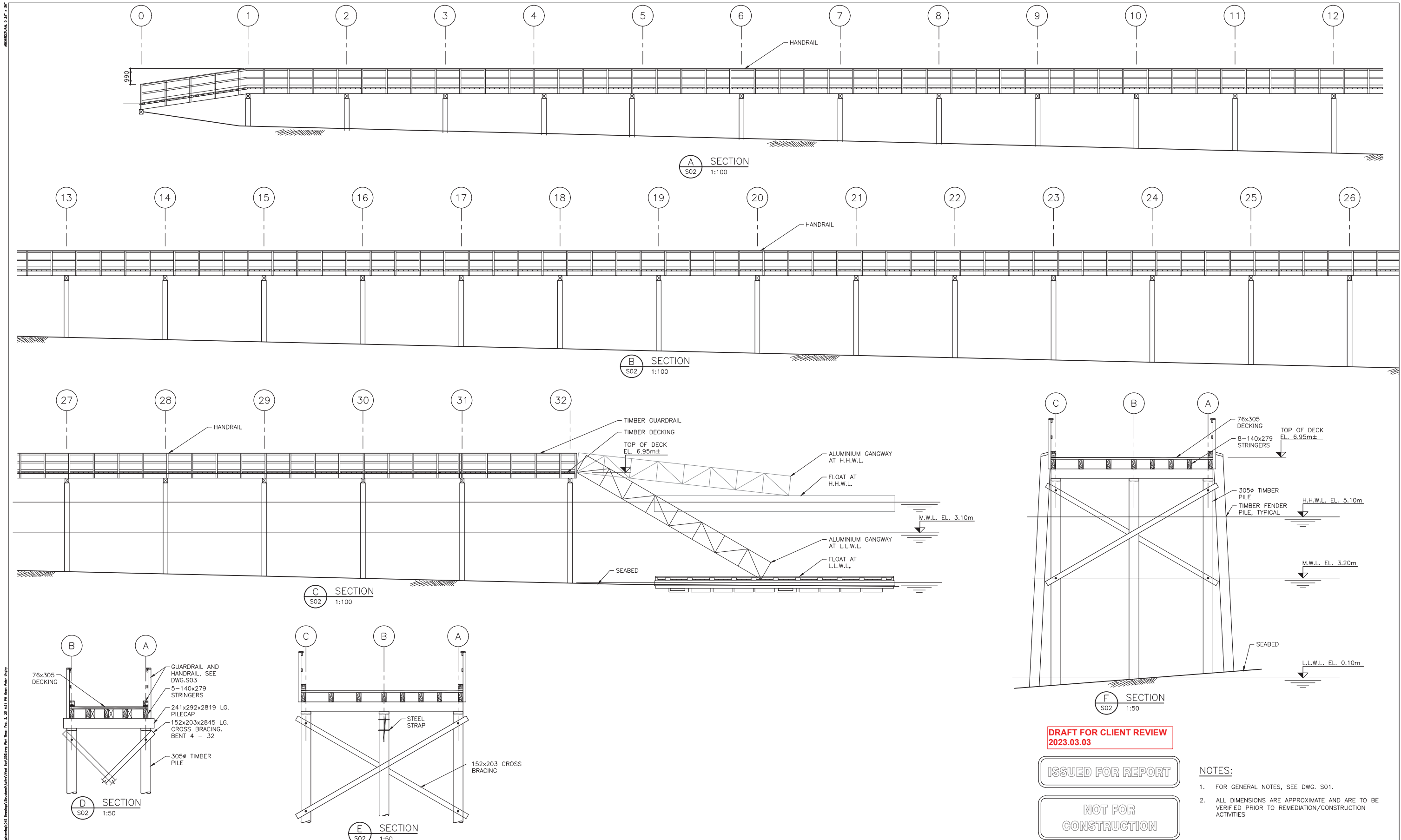
WEST BAY:
GENERAL
ARRANGEMENT -
SHEET 1

PORTS CONDITION ASSESSMENT
WEST BAY, GAMBIER ISLAND
1975 FIELD ROAD SECHULT BC V0N 3A1
SUNSHINE COAST REGIONAL DISTRICT



HEL PROJECT No.
4551-012
SCALE
AS SHOWN
HEL DRAWING No.
S02

CLIENT DWG. No.
N/A
PERMIT No.
N/A
REVISION
A



DRAFT FOR CLIENT REVIEW
2023.03.03

ISSUED FOR REPORT

NOT FOR
CONSTRUCTION

- NOTES:
- FOR GENERAL NOTES, SEE DWG. S01.
 - ALL DIMENSIONS ARE APPROXIMATE AND ARE TO BE VERIFIED PRIOR TO REMEDIATION/CONSTRUCTION ACTIVITIES

ISSUES					
No.	DATE	ISSUED FOR	No.	DATE	ISSUED FOR
A	2023.02.08	CLIENT REVIEW			

SUB CONSULTANT

DRAFTED
PHU

DRAFTING REVIEW

DESIGNED
SPS

DESIGN REVIEW

HEROLD ENGINEERING

3701 Shenton Rd., Nanaimo, BC V9T 2H1
Tel: 250-751-8558 Fax: 250-751-8559
Email: mail@heroldengineering.com

ENGINEERS SEAL

WEST BAY: GENERAL
ARRANGEMENT -
SHEET 2

PORTS CONDITION ASSESSMENT
WEST BAY, GAMBIER ISLAND
1975 FIELD ROAD SECHULT BC V0N 3A1
SUNSHINE COAST REGIONAL DISTRICT



HEL PROJECT No. 4551-012	CLIENT DWG. No. N/A
SCALE AS SHOWN	PERMIT No. N/A
HEL DRAWING No. S03	REVISION A

