

1. READ STRUCTURAL DRAWINGS IN CONJUNCTION WITH ALL OTHER CONTRACT DRAWINGS AND DOCUMENTS. REPORT ANY CONFLICTS TO THE ENGINEER BEFORE COMMENCING WORK.
2. VERIFY ALL DIMENSIONS AND ELEVATIONS PRIOR TO CONSTRUCTION.
3. NOTIFY THE ENGINEER 48 HOURS IN ADVANCE FOR INSPECTION OF STRUCTURAL CONNECTIONS BEFORE COVERING UP.
4. CONTRACTOR'S RESPONSIBILITY: THESE DRAWINGS SHOW COMPLETED STRUCTURAL COMPONENTS OF THE DOCKS. THE REQUIRED TEMPORARY BRACING AND SHORING TO PERFORM THE WORK SAFELY IS THE RESPONSIBILITY OF THE CONTRACTOR.
5. ENVIRONMENTAL WORK PROCEDURES, TIMING AND SPECIAL PRECAUTIONS SHALL BE IN ACCORDANCE WITH THE REQUIREMENTS AND LIMITATIONS OF THE FEDERAL DEPARTMENT OF FISHERIES AND OCEANS, AND THE PROVINCIAL MINISTRY OF WATER, LAND AND AIR PROTECTION.
6. DIMENSIONS ARE IN MILLIMETRES AND ELEVATIONS ARE IN METRES, UNLESS OTHERWISE NOTED.
7. HORIZONTAL DATUM U.T.M NAD 83.
8. VERTICAL DATUM (ELEVATIONS AND CONTOURS) TO CHART DATUM (C.D.).
9. TIDE ELEVATIONS AT THE SITE ARE BASED ON VALUES PUBLISHED BY THE CANADIAN HYDROGRAPHIC SERVICE (CHS) FOR THE SITE AS FOLLOWS:

HIGHER HIGH WATER, LARGE TIDE (H.H.W.L.T.)	5.1 METRES
HIGHER HIGH WATER, MEAN TIDE (H.H.W.M.T.)	4.6 METRES
MEAN WATER LEVEL (M.W.L.)	3.2 METRES
LOWER LOW WATER, MEAN TIDE (L.L.W.M.T.)	1.3 METRES
LOWER LOW WATER, LARGE TIDE (L.L.W.L.T.)	0.1 METRES
10. SUBMIT SHOP DRAWINGS FOR REVIEW PRIOR FABRICATION.

CL	-	CLEAR
C	-	CENTRELINE
CP	-	COMPLETE PENETRATION
C/W	-	COMPLETE WITH
DWG.	-	DRAWING
EL	-	ELEVATION
I.D.	-	INSIDE DIAMETER
LLH	-	LONG LEG HORIZONTAL
LLV	-	LONG LEG VERTICAL
MAX.	-	MAXIMUM
MIN.	-	MINIMUM
N.T.S.	-	NOT TO SCALE
OPP.	-	OPPOSITE
PL	-	PLATE
R	-	RADIUS
SIM	-	SIMILAR
S.S.	-	STAINLESS STEEL
T.O.	-	TOP OF
TYP.	-	TYPICAL
U/S	-	UNDERSIDE
U.N.O.	-	UNLESS NOTED OTHERWISE
WP	-	WORK POINT

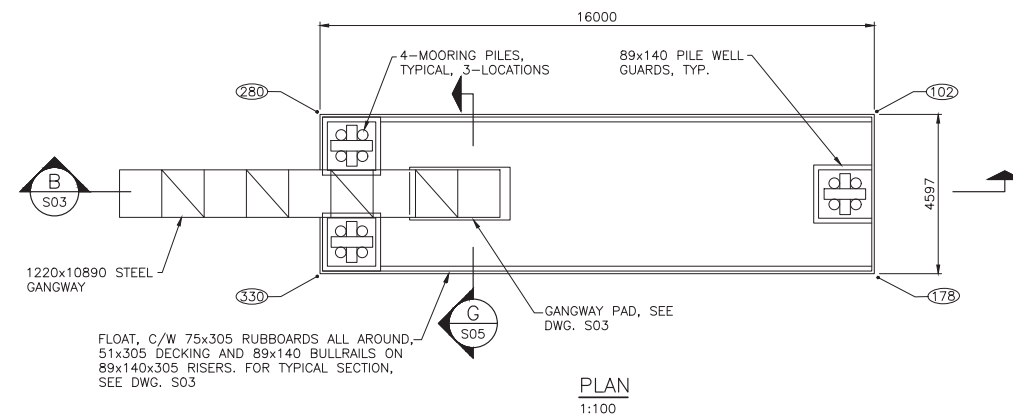
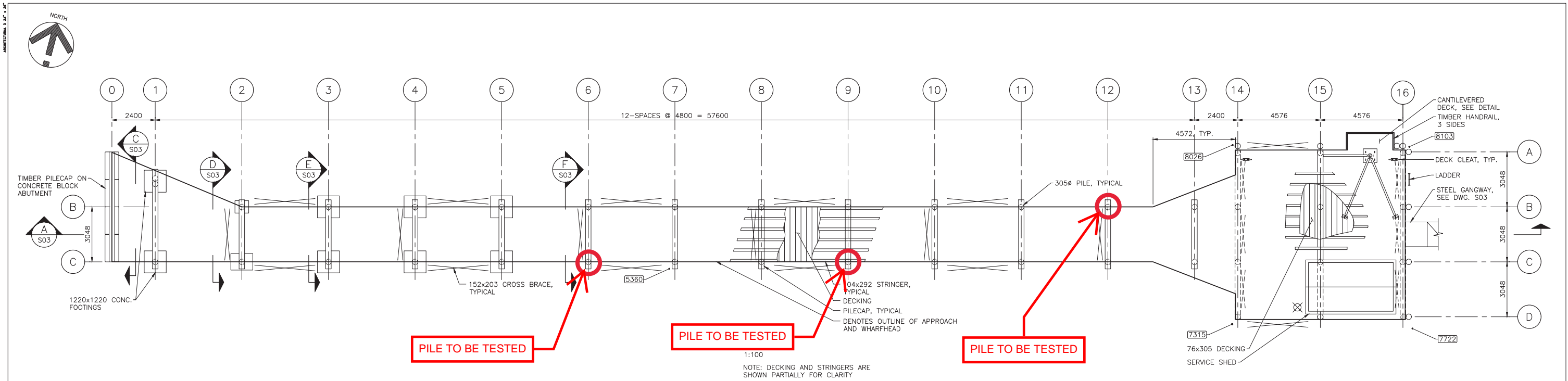
<u>DRAWING LIST</u>	
<u>DRAWING NUMBER</u>	<u>DESCRIPTION</u>
4551-012 S01	HALKETT BAY: GENERAL NOTES AND KEY PLAN
4551-012 S02	HALKETT BAY: GENERAL ARRANGEMENT SHEET 2
4551-012 S03	HALKETT BAY: GENERAL ARRANGEMENT SHEET 2
4551-012 S04	HALKETT BAY: DETAILS



KEY PLAN
1:500

NOT FOR
CONSTRUCTION

ISSUES								SUB CONSULTANT		DRAFTED PHU		 3701 Shenton Rd, Nandimo, BC V9T 2H1 Tel: 250-751-8558 Fax: 250-751-8559 Email: mail@heroldengineering.com	ENGINEERS SEAL		HALKETT BAY: GENERAL NOTES AND KEY PLAN		PORTS CONDITION ASSESSMENT HALKET BAY, GAMBIER 1975 FIELD ROAD SECHELT BC V0N 3A1 SUNSHINE COAST REGIONAL DISTRICT				HEL PROJECT No. 4551-012		CLIENT DWG. No. N/A	
No.		DATE		ISSUED FOR		No.		DATE		ISSUED FOR			DRAFTING REVIEW		SCALE AS SHOWN		PERMIT No. N/A							
A		2023.01.13		CLIENT REVIEW																				
Copyright reserved. This drawing remains the exclusive property of Herold Engineering Limited and may not be reused or reproduced without written consent of Herold Engineering Limited.																								



LEGEND:

- 7445 SOUNDING: TOP OF DECK TO SEABED IN MILLIMETRES.
- 229 FLOAT FREEBOARD: TOP OF DECK TO WATERLINE IN MILLIMETRES.
- LIFE RING
- SAFETY LADDER
- DECK CLEAT

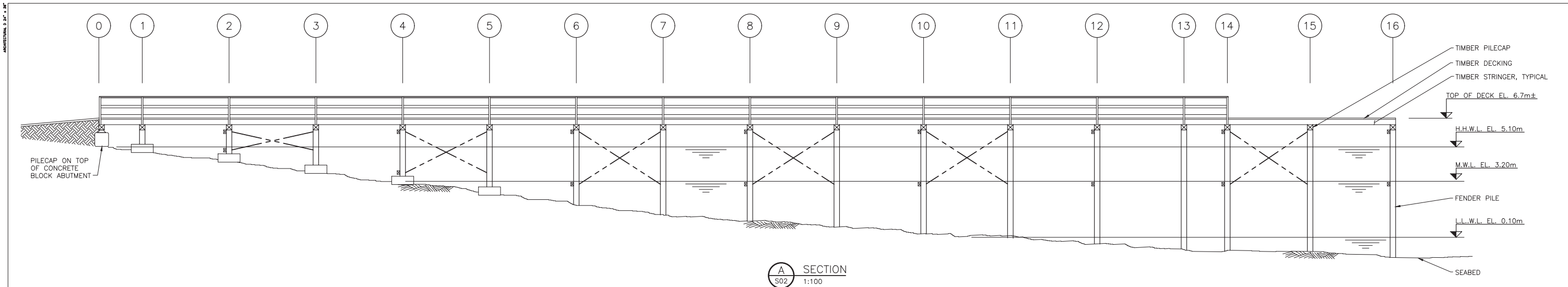
ISSUED FOR REPORT

NOT FOR CONSTRUCTION

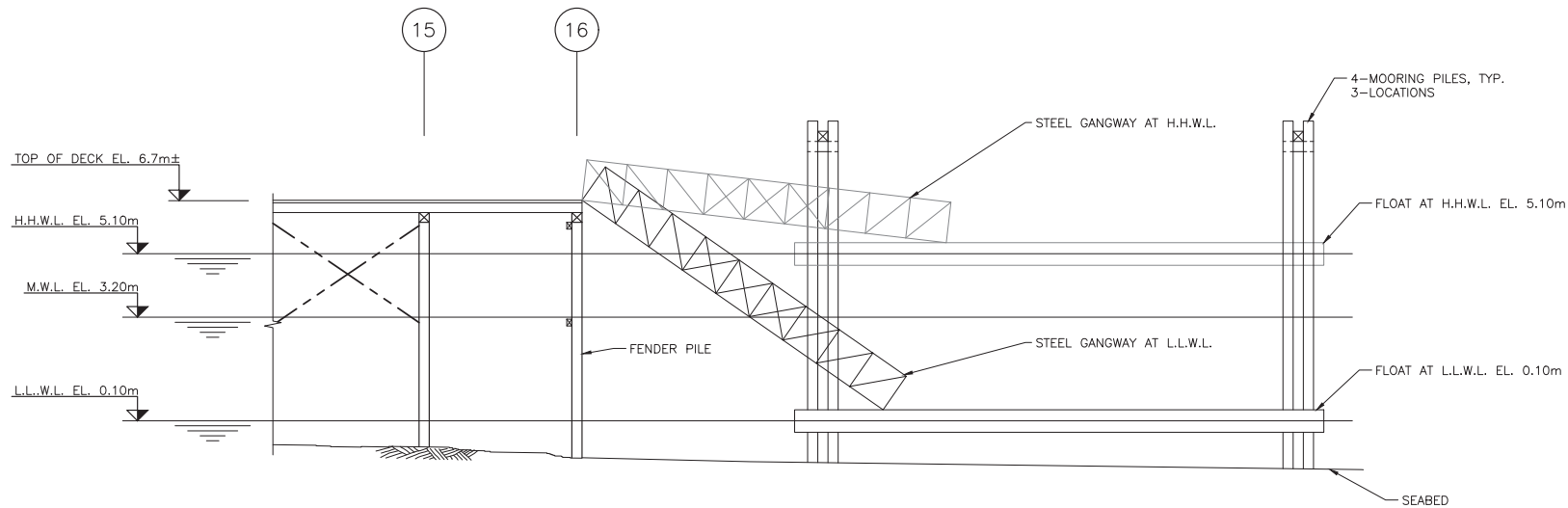
NOTES:

- FOR GENERAL NOTES, SEE DWG. S01.
- ALL ITEMS ARE TIMBER, UNLESS NOTED OTHERWISE.
- ALL DIMENSIONS ARE APPROXIMATE AND ARE TO BE VERIFIED PRIOR TO REMEDIATION/CONSTRUCTION ACTIVITIES

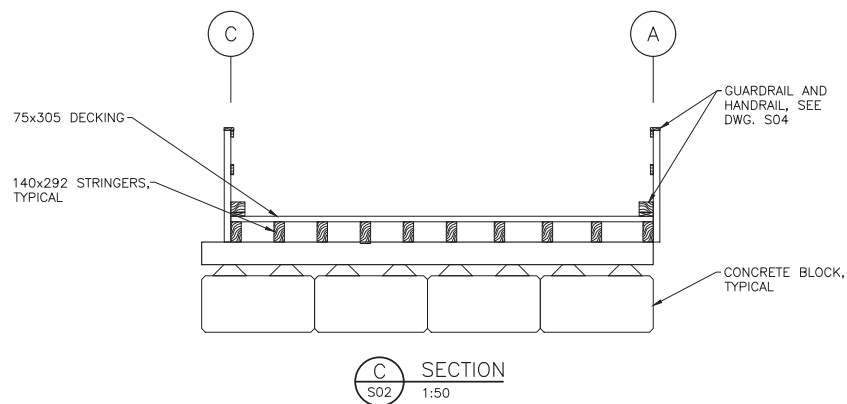
ISSUES						SUB CONSULTANT	<div><div></div><div>HEROLD ENGINEERING</div></div> <div>3701 Shenton Rd, Nanaimo, BC V9T 2H1 Tel: 250-751-8558 Fax: 250-751-8559 Email: mail@heroldengineering.com</div>	ENGINEERS SEAL	HALKETT BAY: GENERAL ARRANGEMENT - SHEET 1	PORTS CONDITION ASSESSMENT HALKET BAY, GAMBIER 1975 FIELD ROAD SECHELT BC V0N 3A1 SUNSHINE COAST REGIONAL DISTRICT	<div><div>SUNSHINE COAST REGIONAL DISTRICT</div></div>	HEL PROJECT No.	CLIENT DWG. No.
No.	DATE	ISSUED FOR	No.	DATE	ISSUED FOR							4551-012	N/A
A	2023.01.13	CLIENT REVIEW										SCALE AS SHOWN	PERMIT No. N/A
												HEL DRAWING No. S02	REVISION A
: Copyright reserved. This drawing remains the exclusive property of Herold Engineering Limited and may not be reused or reproduced without written consent of Herold Engineering Limited.						DESTROY ALL DRAWINGS SHOWING PREVIOUS REVISION							



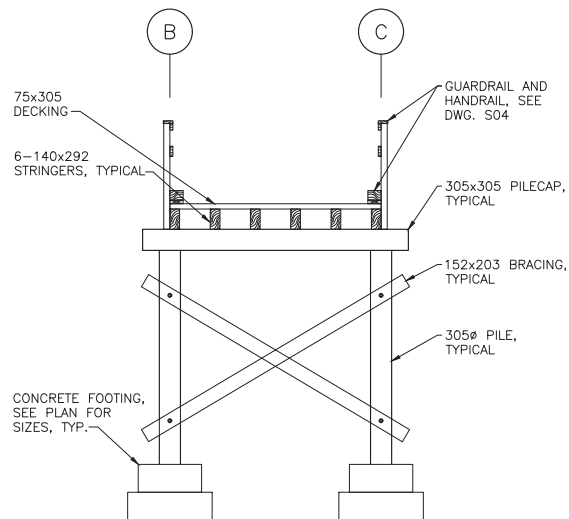
A
S02
SECTION
1:100



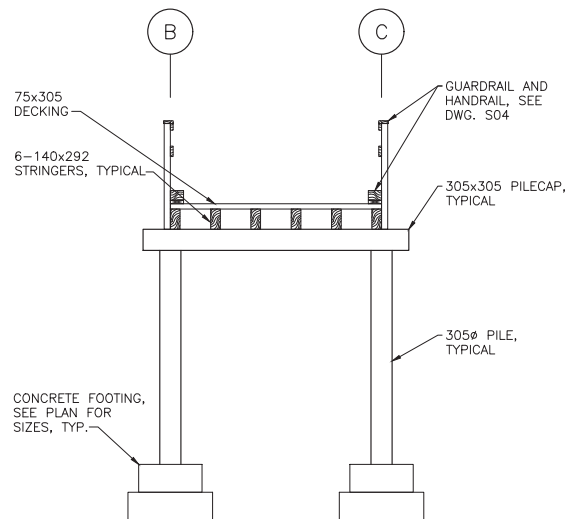
B
S02
SECTION
1:100



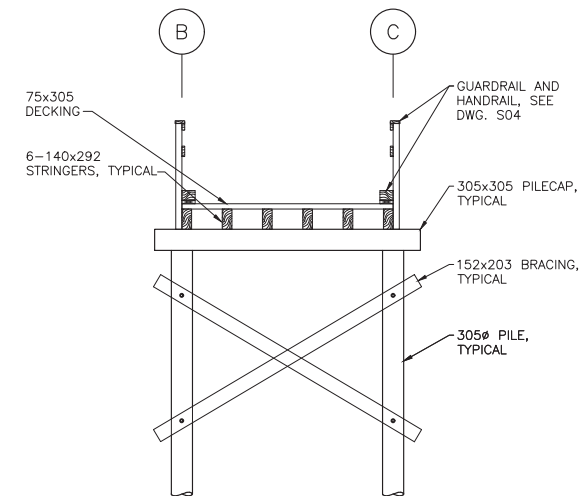
C
S02
SECTION
1:50



D
S02
SECTION
1:50



E
S02
SECTION
1:50



F
S02
SECTION
1:50

ISSUED FOR REPORT

NOT FOR
CONSTRUCTION

NOTES:

- FOR GENERAL NOTES, SEE DWG. S01.
- ALL ITEMS ARE TIMBER, UNLESS NOTED OTHERWISE.
- ALL DIMENSIONS ARE APPROXIMATE AND ARE TO BE VERIFIED PRIOR TO REMEDIATION/CONSTRUCTION ACTIVITIES

ISSUES					
No.	DATE	ISSUED FOR	No.	DATE	ISSUED FOR
A	2023.01.13	CLIENT REVIEW			

SUB CONSULTANT

DRAFTED
PHU
DRAFTING REVIEW
DESIGNED
DESIGN REVIEW

HEROLD ENGINEERING
3701 Shenton Rd, Nanaimo, BC V9T 2H1
Tel: 250-751-8558 Fax: 250-751-8559
Email: mail@heroldengineering.com

ENGINEERS SEAL

HALKETT BAY:
GENERAL
ARRANGEMENT -
SHEET 2

PORTS CONDITION ASSESSMENT
HALKET BAY, GAMBIER
1975 FIELD ROAD SECHULT BC V0N 3A1
SUNSHINE COAST REGIONAL DISTRICT



HEL PROJECT No. 4551-012	CLIENT DWG. No. N/A
SCALE AS SHOWN	PERMIT No. N/A
HEL DRAWING No. S03	REVISION A

DESTROY ALL DRAWINGS SHOWING PREVIOUS REVISION



ISSUES								
No.	DATE	ISSUED FOR	No.	DATE	ISSUED FOR	No.	DATE	ISSUED FOR
A	2023.01.13	CLIENT REVIEW						

© Copyright reserved, this drawing remains the exclusive property of Ikerdik Engineering Limited and may not be reused or reproduced without written consent of Ikerdik Engineering Limited.