



EFFECTIVE JUNE 13, 2023 **Changes to Drywall Acceptance at Sechelt Landfill and Pender Harbour Transfer Station**

Due to a WorkSafeBC Order at New West Gypsum, our drywall recycler, effective June 13, 2023, drywall that is 1990 or newer will be accepted at our facilities **without testing**.

A PIECE OF DRYWALL WITH A DATE STAMP MUST BE PRESENTED TO THE SCALE ATTENDANT WHEN ENTERING THE SITE.

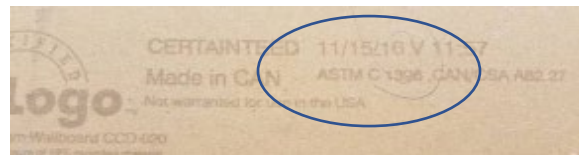
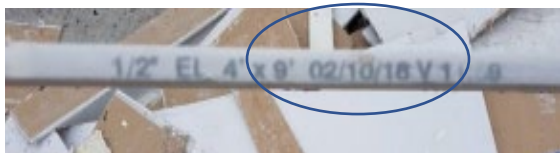
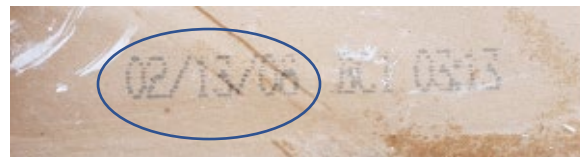
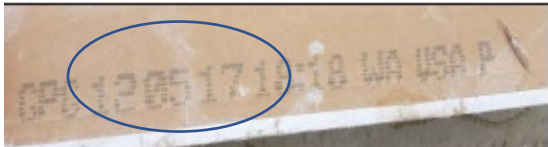
Drywall older than 1990 or without a date stamp and accompanied by Analytical Reports only will no longer be accepted at our sites.

New procedure for all SCRD Residents and Contractors:

Drywall with Date Stamp of 1990 or newer ACCEPTED:

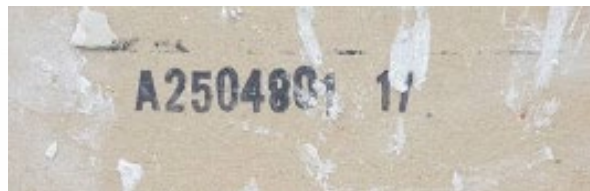
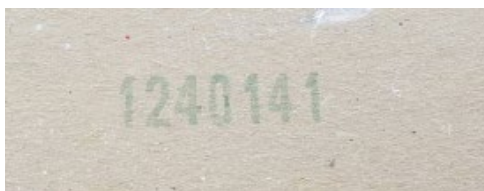
1. Homeowner or Contractor must present a piece of drywall with a date stamp of 1990 or newer to the scale attendant before entry to the drop off area is granted.
2. The date stamp must be clearly visible to scale attendant, staff will **NOT** be handling the drywall, **the public will not be permitted to disturb their loads until a date stamp is presented**,
3. There must be at least one piece of date stamped drywall for every type of drywall in the load. For example, if someone has peach painted drywall, white drywall and texture drywall they must show a piece of date stamped drywall for each type, a total of 3 pieces in this example.
4. A Drywall Declaration Form (provided by the Scale Attendant on site) must be filled out and legible.

Examples of date stamps:



*****Manufacturer's date stamps are black, blue or purple (the different colours are attributed to low printer ink during manufacturing). Acceptable date stamps are NEVER green. The date stamp can be on the front, back or edge of the board*****

Examples of stamps found on drywall that are NOT date stamps:



Drywall older than 1990 or without a date stamp **TEMPORARILY NOT ACCEPTED AT SCRD SITES**

- Acceptance of loads with drywall older than 1990 or without a date stamp will be **suspended from our sites until we are able to meet WorkSafeBC requirements.**
- **New West Gypsum** will accept drywall of this category, please carefully review their procedures and ensure you have appropriate documentation BEFORE going to the site.
<https://www.nwgypsum.com/british-columbia-can.html>

Companies that deal with asbestos waste, including drywall:

as of July 2023

Company	Office location	Phone	Testing	Removal	Disposal
ACM Environmental	Vancouver	604-873-8599	•	•	•
Actes Environmental	North Vancouver	604-990-4258	•	•	
Annacis Waste Disposal	Annacis Island	604-594-7848			•
Astech Environmental	Surrey	604-575-1122			•
Healthy Home Doctor	Sunshine Coast	604-229-7706	•		
HLI Hazmat Logistics	Surrey	604-536-7801			•
Kare Environmental	Vancouver	604-563-0970	•	•	
Pinchin West	Vancouver	604-244-8101	•	•	
Proactive Hazmat & Environmental Ltd	Langley	778-298-2268		•	•
Solution-Based Construction	Sunshine Coast	604-741-3999	•	•	

PLEASE NOTE:

All contractors or homeowners hiring contractors of any type **must ensure any drywall older than 1990 or without a date stamp has a Hazardous Material Survey completed by a Qualified Person** as per OSH regulations, OHSR 20.112(1)-(8).

Link to OSH Regulation 20.112(1)-(8):

<https://www.worksafebc.com/en/law-policy/occupational-health-safety/searchable-ohs-regulation/ohs-regulation/part-20-construction-excavation-and-demolition#SectionNumber:20.112>

What is a Qualified Person:

<https://www.worksafebc.com/en/law-policy/occupational-health-safety/searchable-ohs-regulation/ohs-guidelines/guidelines-part-06#SectionNumber:G6.1-1>

We apologize for the inconvenience of these changes. The new procedures have legal and financial impacts that need to be carefully reviewed and analyzed to determine our next steps. We appreciate your efforts to comply with these requirements as we work to maintain the drywall recycling and disposal service at our facilities.